



امداد خودرو فارما

تلفن شبانه روزی: ۰۲۱-۸۸۸۶۲۰۸۵

[FarmaSOS.com](http://FarmaSOS.com)

2009 LEXUS SC  
the pursuit

# امداد خودرو فارما

تلفن شبانه روزی: ۰۲۱-۸۸۸۶۲۰۸۵

[FarmaSOS.com](http://FarmaSOS.com)





*the pursuit of perfection.*

*It's a phrase we use a lot. But what does it really mean?*

*The answer isn't only found in wood and leather, but in the pursuit of insight and ideas.*

*And how they get transformed into world-class innovations and a more passionate driving experience.*

*This is the 2009 SC. And these are the pursuits that built it.*

1. **ICONIC LUXURY**  
the pursuit of  
transcending transportation

2. **CRAFTSMANSHIP**  
the pursuit of  
the automobile as fine art

3. **DETAILS**  
the pursuit of  
a defining difference



# امداد خود و فارما

تلفن شبانه روزی: ۰۲۱-۸۸۸۶۲۰۸۵

[FarmaSOS.com](http://FarmaSOS.com)







دارد خودرو فارس

تلفن شماره روزی: ۰۲۱-۸۸۷۶۱۸۸

FarmaSOS.com





فارما سوس فارما

تلفن شبانه روزی ۰۲۱-۸۸۶۲۰۸۵

FarmaSOS.com



A hardtop coupe? An open-air convertible? Either way, an incredible driving experience.



# 1 امداد خودرو فارما

the pursuit of  
transcending transportation

WHILE MOST AUTOMOBILES MERELY MOVE PASSENGERS FROM PLACE TO PLACE, the SC goes much further. It takes into account the entire driving experience and strives to elevate it in every way. We sought a perfect blend of ingenuity, performance and style—ultimately selecting the best of everything we had learned as a car company. Which explains why it includes a sophisticated audio system created by Mark Levinson,<sup>®1</sup> curves that are sculptural as well as aerodynamic, seating that's trimmed with hand-selected semi-aniline leather and a seductively smooth ride. All packaged under a convertible hardtop that opens and closes at the touch of a button. In short, it's a drive that feels more like a well-deserved reward—one that also happens to take you just where you want to go.

تلفن شبانه روزی: ۰۲۱-۸۸۸۶۲۰۸۵

FarmaSOS.com

BY DESIGN, ITS IMAGE ALWAYS REFLECTS THE CÔTE D'AZUR.





WITH VILLAS, SEASIDE CAFES AND ENDLESS MEDITERRANEAN AMBIENCE, the South of France may be the epicenter of style. To inspire the SC designers to equally lofty levels, we sent them to the Côte d'Azur for several weeks of research. There they were immersed in renowned architecture, galleries, homes and five-star hotels. With a better understanding of the lifestyle, and the nature of luxury, they were able to apply new knowledge to their own designs. As a result, the SC has

an artful interior that feels equally sophisticated and sporty. Its strong character lines mimic those of the yachts near Cannes. Natural wood and leather in the cabin give it the feel of a beautiful living room. And to help you maneuver on roads like you'd find in Monte Carlo, the seating is shaped to comfortably cradle occupants in any turn. While these are just a few examples, they all lead to a compelling ride that soothes and indulges—whether the vehicle's top is up or down.



امداد خودرو فارما

تلفن شنبانه روزی: ۰۸۵-۸۸۸۳۰۲۱

FarmaSOS.com



Unlike many convertibles, the SC was designed from the very beginning to be as visually striking with its top down as it is with its top up.



4.3-liter V8, 0-60 in 5.8 seconds<sup>2,3</sup>

288 horsepower<sup>2</sup>, 317 lb-ft of torque<sup>2</sup>

Variable Valve Timing  
with intelligence (VVT-i)

SHIFTING SO SMOOTH YOU'LL ONLY FEEL YOUR ADRENALINE SURGE.

امداد خودرو فارما

بلاژ شیشه روزی: ۰۸۵-۸۸۸۶۲۰۲۱

FarmaSOS.com





⊕ Six-speed sequential-shift Electronically Controlled Transmission with intelligence (ECT-i)

⊕ Lexus intuitive powertrain control

⊕ 18-inch alloy wheels (available run-flat tires)<sup>4,5</sup>

IN A VEHICLE LIKE THE SC, POWER SHOULD BE EXHILARATING but also demonstrate a high measure of finesse. So we added a sixth gear to the SC's sequential-shift automatic transmission. The wide gear-ratio spread provides not only more acceleration and efficiency but also silky-smooth, virtually

seamless shifting. It works in conjunction with another feature called Electronically Controlled Transmission with intelligence that automatically compensates for hills or headwinds, and intuitively adapts shift-timing to the driver's acceleration habits. The engine also benefits from Variable Valve Timing with intelligence that

increases torque at lower speeds for improved responsiveness and boosts overall power at higher speeds for better acceleration. Combined, the vehicle's engine delivers 288 horsepower,<sup>2</sup> 317 lb-ft of torque<sup>2</sup> and accelerates the SC 430 from 0 to 60 mph in a crisp 5.8 seconds.<sup>2,3</sup> All so smoothly, you may hardly even notice.

# امداد خودرو فارما

تلفن شبانه روزی: ۰۲۱-۸۸۸۶۲۰۸۵

[FarmaSOS.com](http://FarmaSOS.com)





# امداد خودرو فارما

تلفن شبانه روزی: ۰۲۱-۸۸۸۶۲۰۸۵

[FormaSOS.com](http://FormaSOS.com)





# امداد خودرو فارما

تلفن شبانه روزی: ۰۲۱-۸۸۸۶۲۰۸۵

FarmaSOS.com



# 2. امداد خودرو فارما

*the pursuit of  
the automobile as fine art*

تلفن شبانه روزی: ۰۲۱-۸۸۸۶۲۰۸۵

FarmaSOS.com

IT'S THE GOAL OF EVERY ARTIST TO CREATE A MASTERPIECE. The craftsman who meticulously hand selects the SC cabin's semi-aniline leather trim is no exception. Nor is the designer who sculpts the vehicle's original shape to a drag coefficient as low as 0.30. Or the individual who rigorously tests the cabin's leather. To ensure it retains its beauty and strength, it is pitted against several elements, including ultraviolet rays, the flame of a blowtorch and temperatures as low as 40 degrees below zero. Only the leather stock that meets the highest Lexus standard is used. These efforts, and those of the many others working on the SC, continue a long Lexus tradition of hands-on attention to detail. Artistry like this deserves much appreciation: a long stretch of winding road will do.





امداد خودرو فارما

تلفن شبانه روزی: ۰۲۱-۸۸۸۶۲۰۸۵

FarmaSOS.com





ایجاد خود و فارما

تلفن: ۰۲۱-۸۸۸۶۲۰۸۵

FarmaSOS.com

A SUCCESSFUL DESIGN BEGINS WITH THE FINEST MATERIALS, and Lexus has always adhered to this philosophy. This is especially evident in the SC's cabin where you'll find the seating, the center console and door panels trimmed in supple semi-aniline leather and genuine walnut or bird's-eye maple trim. Semi-aniline leather comes from hand-chosen

hides; is minimally treated to preserve its glove-soft, natural feel; and is completely penetrated with dye so that the color runs all the way through. And for consistency, all of the interior's wood panels are meticulously hand-chosen so their color and grain are uniform and closely match adjacent panels. These panels are then polished and finished with a final, glossy sheen.



WHEN YOU BEGIN WITH SUPERIOR RAW MATERIALS,  
THE END RESULT IS RARELY IN DOUBT.



امداد خودرو فارما

تلفن شبانه روزی: ۰۸۵-۸۸۸۶۲۰۲۱

FarmaSOS.com





امداد خودرو فارما

تلفن شبانه روزی: ۰۲۱-۸۸۸۶۲۰۸۵

FarmaSOS.com





فارما سوس

تلفن شبانه روزی: ۰۲۱-۸۸۸۶۲۰۸۸

FarmaSOS.com





امداد فورس

تلفن تسيله روزی: ۰۸۵-۸۸۸۶۲-۲۱

LEXUS  
FarmaSOS.com



TECHNOLOGY, UNVEILED.

○ Voice-activated DVD Navigation System<sup>6</sup>

○ Automatic Sound Levelizer (ASL)

○ Mark Levinson Premium Audio System<sup>1</sup>, nine speakers

○ External DSP seven-channel amplifier

○ Bluetooth<sup>®</sup> compatibility<sup>7</sup>



تلفن شبانه روزی: ۰۲۱-۸۸۸۶۲۰۸۵

FarmaSOS.com

CONCEALED BEHIND THE CONSOLE'S WOOD PANELING, drivers will find two key features: a Mark Levinson<sup>®</sup> Premium Audio System<sup>1</sup> and a voice-activated DVD Navigation System<sup>6</sup>. The audio system was designed specifically for the SC's cabin and will impress even the most discriminating audiophiles. It features nine purposefully positioned speakers and a six-disc, in-dash CD auto-changer. And when the top is down, the system automatically adjusts sound levels and equalization to compensate for extraneous noise. For more information, please visit [lexus.com/SC/levinson](http://lexus.com/SC/levinson).

The voice-activated Navigation System<sup>6</sup>, meanwhile, helps guide you to virtually any address in the contiguous United States. It offers up to three different route options, five million points of interest and understands more than 100 voice commands. The high-resolution screen helps make routes easy to follow. And again, when the top is down, the vehicle intuitively compensates: The navigation display screen helps reduce glare by power-tilting to three different angles. For a demonstration, please visit [lexus.com/SC/navigation](http://lexus.com/SC/navigation).



# امداد خودرو فارما

تلفن شبانه روزی: ۰۲۱-۸۸۸۶۲۰۸۵

[FarmaSOS.com](http://FarmaSOS.com)



# 3. امداد خودرو فارما

*the pursuit of  
a defining difference*

WHAT MAKES A LEXUS A LEXUS? THE ANSWER IS SIMPLE: an unwavering focus on details. Every sensor, nuance and contour is analyzed, refined and then analyzed again. The SC's convertible hardtop is an excellent example. It benefits from decreased tolerances and precise engineering to give it a solid, weatherproof fit with no flapping or leaks. Then, with just a touch of a button, the aluminum-alloy top folds smoothly and quietly into the trunk. A chime signals you once the top is completely down, and the entire motion takes just 25 seconds. The experience is markedly more enjoyable than what drivers often encounter with other convertibles. And we wouldn't have it any other way.

تلفن شبانه روزی: ۰۸۵-۸۸۸۶۲۰۸۵-۲۱

FarmaSOS.com

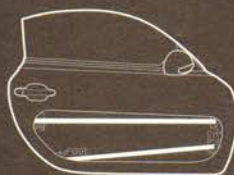


STEEL BEAMS HELP GIVE EXTRA RIGIDITY TO ITS ROCK-SOLID CHASSIS.  
NOT TO MENTION TO DRIVER CONFIDENCE.

امداد خودرو فارما



تلف: ۰۸۵ ۸۸۸۶۳۰۸۵  
FarmaSOS.com



Whether the SC's top is up or down, its chassis was designed to resist twisting and bending. In fact, even in the most aggressive turns, its structural integrity should provide a confident ride.



TO CREATE A CABIN WITH AN ESPECIALLY SOLID FEEL, LEXUS DEVELOPED A UNIQUE STEEL-REINFORCED CHASSIS. Special thick bracing was placed throughout, including behind the front wheels and in the rear of the cabin. And each door boasts two separate steel beams to help provide added side-impact

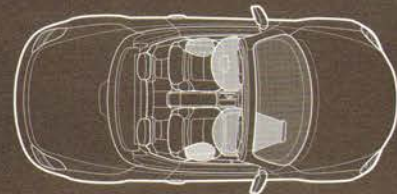
protection. Now, during cornering or even at top speeds, the SC's chassis feels strong and remarkably rigid. The cabin also includes crumple zones designed to help absorb impact energy and an Adaptive Front Lighting System with High-Intensity Discharge headlamps for brighter, expanded visibility around curves.

از اد خودرو فارما

تلفن شبانه روزی: ۰۲۱-۸۸۸۶۴۰۸۵

FarmaSOS.com

The SC features a comprehensive set of protective airbags<sup>®</sup> that includes driver's and front passenger's airbags<sup>®</sup>, front seat-mounted side airbags<sup>®</sup> and driver's and front passenger's knee airbags<sup>®</sup>





MANY JUDGE CONVERTIBLES  
BY HOW MUCH YOU SEE.  
WE SUGGEST YOU JUDGE THEM  
BY HOW MUCH YOU FEEL.

BEFORE WE OFFERED A CONVERTIBLE, we knew it would have to meet the high standards of Lexus owners. A windy, noisy, chilly experience would be unacceptable. To provide passenger comfort, we used computer simulation to analyze and manage airflow over, under, around and through the vehicle. Ultimately, many adjustments to the design were made, including angling the windshield aerodynamically, raising the cockpit cowl and placing a rear wind deflector behind the rear seats. This fine-tuning helped eliminate drafts and wind buffeting as well as reduce wind noise. In fact, the cabin is so insulated and quiet, passengers can converse at normal voice levels even when the top is down. We also included Intuitive Climate Control. This feature uses sensors to determine how much sun is penetrating into the cabin, whether the top is up or down, and how fast the SC is traveling. If required, it can then activate lap-level vents to provide cooled air when and where you need it. When driving on a cool night, the lap vents can automatically deliver a welcome extra blast of warmth. OK, now you can put the top down.



امراد خودرو فارما  
تلفن شبانه روزی: ۰۲۱-۸۸۸۶۲۰۸۵  
FarmaSOS.com





انداد خودرو فارما

تلفن شیشه رازی: ۰۲۱-۸۸۸۶۴۰۸۵

FarmasOS.com



امداد خودرو فارما

تلفن شبانه روزی: ۰۲۱-۸۸۸۶۲۰۸۵

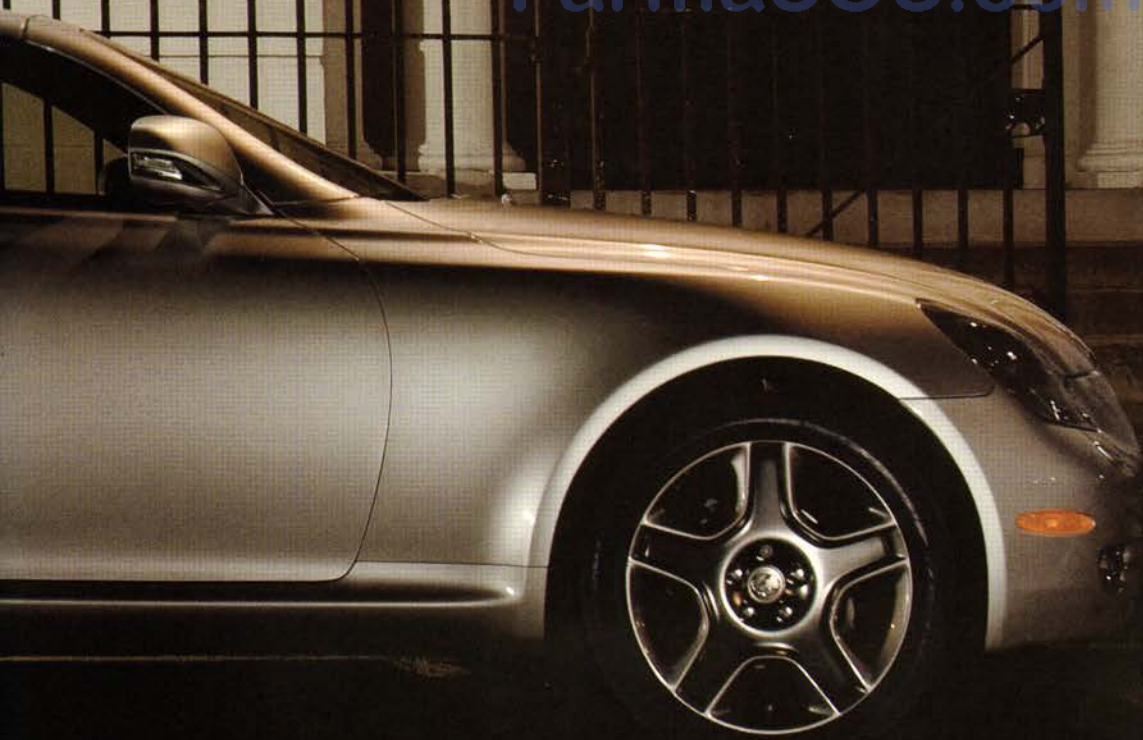
FarmaSOS.com



# امداد خودرو فارما

تلفن شبانه روزی: ۰۲۱-۸۸۸۶۲۰۸۵

[FarmaSOS.com](http://FarmaSOS.com)





Customer service beyond expectations. It's the one pursuit that has nothing to do with the design of our vehicles and everything to do with our philosophy as a company. "Treat each customer as we would a guest in our home" is not just a promise we make. It's a promise we keep.

امداد خودرو فارما

تلفن شبانه روزی: ۰۲۱-۸۸۸۶۲۰۸۵

Farma3OS.com





## THE DEALERSHIP EXPERIENCE

If you visit one of our dealerships, make yourself at home. Help yourself to a beverage or some light fare. Been awhile since you've checked your stocks or e-mail? Most dealerships provide Internet access. Picking up your new Lexus? Rest assured that our associates will make the transition as seamless as possible. From setting your favorite radio stations to connecting and transferring your compatible cell phone's contacts to the available Bluetooth®\* system on your vehicle. We'll even position and adjust the driver's seat to your exact specifications.

## Lexus MAGAZINE

Every three months, owners are mailed a complimentary issue of Lexus magazine, an award-winning journal of experiences, trends and human-interest pieces. While some stories are directly related to Lexus vehicles and innovations, the magazine primarily focuses on the more unique and lifestyle-oriented aspects of luxury. Readers will find interesting information and thought-provoking articles on cuisine, culture and travel destinations and will enjoy beautifully photographed articles by well-regarded editors and writers. In fact, current Lexus owners find the magazine so entertaining that the majority pass their personal copy along to family and friends for their enjoyment.

## VIP TREATMENT

We've made arrangements with select partners across the country to provide first-class treatment to Lexus owners. At specific venues, for example, benefits include waived parking fees, complimentary valet service and convenient, designated spaces. At certain theaters and sporting arenas, Lexus owners can receive VIP access to Lexus clubs and lounges through their dealer. And, should you ever visit California's world-renowned Napa Valley, we've arranged for VIP treatment at some of the finest wineries. Specific benefits vary from exclusive reserve tastings and complimentary shipping to personal cellar tours and private picnics overlooking the valley.

We've also formed partnerships with nearly 30 of the country's premiere vacation destinations, including the Amangani in Jackson Hole, the Fairmont Orchid in Hawaii and Blackberry Farm in Tennessee. While the benefits vary, owners are typically given a complimentary room upgrade or a \$100 credit to be applied toward the hotel's most popular amenities.

For a complete list of our hotel partners and more information on the ownership benefits listed here, please visit [owners.lexus.com](http://owners.lexus.com).



The service you receive as a Cardmember\* promises everything you expect from Lexus. With the Lexus Pursuits Visa Signature Card, you will enjoy no pre-set spending limit† and no annual fee. Also enjoy exclusive Visa Signature concierge benefits, including complimentary assistance with travel, hard-to-get tickets and even the perfect gift. Plus, you will receive preferred access to popular entertainment, dining and special events.

With Lexus Pursuits Points, you will earn Lexus rewards, which are part of one of the richest rewards programs available. Earn 5 points for every \$1 spent at your participating Lexus dealership and 1.5 points for every \$1 spent everywhere else. Points are redeemable toward Lexus service, parts, accessories—and even up to 10% off your next new Lexus vehicle purchase or lease at participating Lexus dealerships. With the optional Travel Rewards Program (yearly fee required) you may choose to redeem your points toward virtually all your travel needs.

To apply, call 888-777-5555 ext. 82246 or visit [LexusPursuits.com/apply/vehicle09](http://LexusPursuits.com/apply/vehicle09).

\*On approved credit. Subject to Terms and Conditions in the Lexus Pursuits Visa Cardmember Agreement and Lexus Pursuits Rewards Program Terms and Conditions. Points redemption not available at dealerships in Hawaii.

†No pre-set spending limit does not mean unlimited spending.

The creditor and issuer of the Lexus Pursuits Visa is Lexus Financial Savings Bank.

\*The Bluetooth® technology phones listed on [lexus.com](http://lexus.com) have been tested for compatibility with Lexus vehicles. Performance will vary based on phone software version, coverage and your wireless carrier. Phones are warranted by their manufacturer, not Lexus.



EXTERIOR COLORS



Mercury Metallic



Starfire Pearl



Opaline Pearl\*



Matador Red Mica



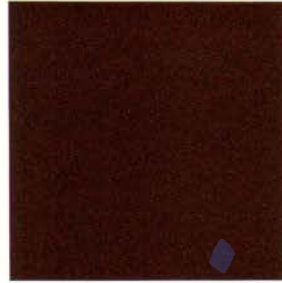
Golden Almond Metallic



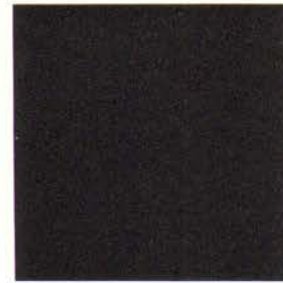
Obsidian



Black Sapphire Pearl



Tigereye Mica



Smoky Granite Mica

INTERIOR COLORS AND WOOD TRIM



Ecru Leather



Camel Leather



Black Leather



Brown Walnut



Espresso Bird's-Eye Maple

امداد خودرو فارما

تلفن شبانه روزی: ۰۲۱-۸۸۶۲۰۸۵

FarmaSOS.com

COLOR AVAILABILITY

	Ecru Leather	Camel Leather	Black Leather
Mercury Metallic	■		■
Starfire Pearl	■	■	
Opaline Pearl	■		■
Matador Red Mica	■	■	■
Golden Almond Metallic	■	■	
Obsidian	■	■	■
Black Sapphire Pearl	■	■	
Tigereye Mica		■	
Smoky Granite Mica	■	■	■
Brown Walnut	■		■
Espresso Bird's-Eye Maple		■	

\*Available early 2009.



## STANDARD LUXURY FEATURES

### LUXURY AND CONVENIENCE

Intuitive Climate Control with lap-level vents, interior air filter, smog sensor and automatic recirculation

Power tilt-and-telescopic steering column with automatic tilt-away

Lexus Memory System to control power driver's and front passenger's seats (except lumbar), outside mirrors and steering wheel

Power windows with one-touch auto open/close feature

Cruise control

Remote-linked window opening

Retained accessory power for windows

Outside mirrors with integrated turn signals

Electrochromic (auto-dimming) inside rearview mirror and outside mirrors

Power door locks

Multifunction, in-key remote entry system with rolling-code technology<sup>9</sup>

HomeLink<sup>®</sup> universal transceiver to operate compatible garage, gate, home lighting and home security systems

Interior electronic trunk-lid and fuel-filler door releases

Lexus Personalized Settings (LPS) to customize select electronic functions

Power-retractable aluminum-alloy roof

Dual-compartment center console with accessory power outlet

Illuminated entry system and scuff plates

Dual chrome exhaust tips

Rear wind deflector

### SEATING AND TRIM

10-way driver's and front passenger's (including lumbar) power seats

Heated front seats

Height-adjustable headrests for front seats

Brown walnut or espresso bird's-eye maple wood interior trim and shift knob

Semi-aniline leather-trimmed interior

Wood- and leather-trimmed steering wheel

Carpeted floor mats

### AUDIO AND NAVIGATION

Voice-activated DVD Navigation System<sup>6</sup> with Bluetooth<sup>®</sup> technology<sup>7</sup>

Mark Levinson nine-speaker 240-watt @ less than 0.01% THD, 20-20,000 Hz<sup>10</sup> Premium Audio System<sup>1</sup> with Automatic Sound Levelizer (ASL) and in-dash, single-feed, six-disc CD auto-changer

Power mast antenna with FM-diversity system

### INSTRUMENTATION AND CONTROLS

Steering-wheel-mounted audio controls

Electroluminescent instrumentation

Automatic on/off projector-beam headlamps with 30-second delay

Outside temperature gauge

## STANDARD SAFETY AND SECURITY FEATURES

### ACTIVE SAFETY

Vehicle Stability Control (VSC)<sup>11</sup>

Traction Control (TRAC)

Four-wheel power-assisted disc brakes

Four-sensor, four-channel Anti-lock Braking System (ABS)

Brake Assist<sup>12</sup>

Electronic Brakeforce Distribution (EBD)

Direct Tire Pressure Monitor System<sup>13</sup>

Adaptive Front Lighting System (AFS)

### PASSIVE SAFETY

Driver's and front passenger's airbag system (SRS)<sup>8</sup>

Front seat-mounted side airbags (SRS)<sup>8</sup>

Driver's and front passenger's knee airbags (SRS)<sup>8</sup>

Highly rigid body structure with front and rear crumple zones

Collapsible steering column

Dual side-impact door beams

Reinforcements in pillars and doorsills

Impact-dissipating upper interior trim

High-Intensity Discharge (HID) headlamps with dynamic auto leveling

Headlamp washers

Daytime running lights

Integrated foglamps

LED taillamps

Water-repellent door glass

Variable intermittent windshield wipers with mist cycle

Rear-window defogger with auto-off timer

Power-adjustable outside mirrors with defoggers and integrated turn signals

Three-point seatbelts for all seating positions, pre-tensioners with force limiters for front seats

Automatic Locking Retractor/Emergency Locking Retractor (ALR/ELR) seatbelts for all passenger seating positions. Emergency Locking Retractor (ELR) only for driver's seat

Child Restraint Seat (CRS) tether anchor brackets for rear seating positions

First aid kit

Tool kit

### SECURITY

Vehicle theft-deterrent and engine-immobilizer system<sup>9</sup> with in-key transponder

Emergency interior trunk release



## WHEELS



18-in five-spoke alloy wheels<sup>4</sup>  
STANDARD

18-in five-spoke Liquid Graphite-finished alloy wheels<sup>4</sup>  
AVAILABLE



18-in G-Spider alloy wheels<sup>4</sup>  
AVAILABLE



18-in Machined Tourmaline alloy wheels<sup>4</sup>  
AVAILABLE

## BODY AND DIMENSIONS

**HEADROOM**  
front/rear  
37.2/33.9 in (945/861 mm)

**SHOULDER ROOM**  
front/rear  
53.8/46.6 in (1,367/1,184 mm)

**HIP ROOM**  
front/rear  
55.7/49.5 in (1,415/1,257 mm)

**HEIGHT**  
53.1 in (1,349 mm)

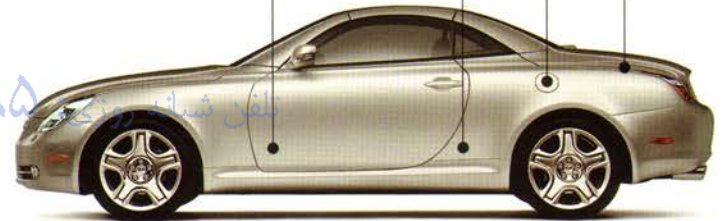


**WIDTH** 72.0 in (1,829 mm)

**TRUNK CAPACITY**  
8.8 cu ft (249 L)  
9.4 cu ft (266 L) (with available run-flat tires,<sup>5</sup> without spare)

**FUEL-TANK CAPACITY**  
19.8 gal (75 L)

**LEG ROOM**  
front/rear  
43.6/27.1 in (1,107/688 mm)



**WHEELBASE** 103.1 in (2,619 mm)

**OVERALL LENGTH** 178.5 in (4,534 mm)

امداد خودرو فارما  
تلفن شماره ۰۲۱-۸۸۸۶۲۰۸۵  
FarmaSOS.com

## OPTIONS AND ACCESSORIES\*

18 x 8.0-in five-spoke Liquid Graphite-finished alloy wheels<sup>4</sup>  
with 245/45VR18 summer or all-season run-flat tires<sup>4,5</sup>

245/45VR18 all-season or summer run-flat tires<sup>4,5</sup>

Rear spoiler

Cargo mat

Cargo net

Car cover

18-in G-Spider alloy wheels<sup>4</sup>

18-in Machined Tourmaline alloy wheels<sup>4</sup>

## GENERAL

<b>TYPE</b>	Four-passenger retractable hardtop luxury convertible
<b>CONSTRUCTION</b>	Welded-steel unibody
<b>CURB WEIGHT</b>	3,840 lb (1,742 kg)

\*Please see inside back cover for more information regarding options/packages.



## ENGINE

TYPE	90° V8, aluminum block and heads
DISPLACEMENT	4.3 liters (262 cubic inches)
VALVETRAIN	Four cam, four valves per cylinder, with continuously Variable Valve Timing with intelligence (VVT-i)
COMPRESSION RATIO	10.5:1
HORSEPOWER AT RPM	288 hp @ 5,600 <sup>2</sup>
TORQUE AT RPM	317 lb-ft @ 3,400 <sup>2</sup>
EMISSION RATING	Certified Ultra-Low Emission Vehicle (ULEV II)

## PERFORMANCE

0-60 MPH ACCELERATION	5.8 seconds <sup>2,3</sup>
1/4-MILE ACCELERATION	14.3 seconds <sup>2,3</sup>
TOP TRACK SPEED (Electronically Limited)	149 mph <sup>2,3</sup>
EPA FUEL ECONOMY ESTIMATES (city/highway)	16/23 mpg <sup>14</sup>
AERODYNAMIC DRAG COEFFICIENT	0.31 0.30 (with optional spoiler)
TURNING CIRCLE	35.4 ft

## DRIVETRAIN

TRANSMISSION	Six-speed sequential-shift automatic Electronically Controlled Transmission with intelligence (ECT-i)
DRIVE WHEELS	Rear-wheel drive
FINAL DRIVE RATIO	3.769:1

## CHASSIS

VEHICLE STABILITY CONTROL (VSC) <sup>11</sup>	Electronic system that monitors and helps control loss of traction in a turn using yaw-rate, deceleration, vehicle-speed and steering-wheel-angle sensors. Modulates engine power and applies individual brakes as necessary. Integrates Anti-lock Braking System (ABS), Brake Assist <sup>12</sup> and Traction Control (TRAC)
SUSPENSION	Front: Independent, double-wishbone with coil springs, gas-pressurized shock absorbers with internal rebound springs and stabilizer bar Rear: Independent, double-wishbone with coil springs, gas-pressurized shock absorbers and stabilizer bar
STEERING	Vehicle-speed-sensing, progressive power-assisted rack-and-pinion. 3.3 turns, lock to lock
BRAKES	Four-wheel power-assisted discs, with four-sensor, four-channel Anti-lock Braking System (ABS), Electronic Brakeforce Distribution (EBD) and Brake Assist <sup>12</sup> 11.7-in ventilated front, 12.1-in solid rear discs
WHEELS AND TIRES	18 x 8.0-in five-spoke alloy wheels with 245/40ZR18 summer tires <sup>4</sup> Temporary spare on steel wheel Optional wheels: 18 x 8.0-in five-spoke Liquid Graphite-finished alloy wheels <sup>4</sup> Optional tires: 245/40VR18 summer run-flat tires <sup>4,5</sup> or all-season run-flat tires <sup>4,5</sup>



# امداد خودرو فارما

تلفن شبانه روزی: ۰۲۱-۸۸۸۶۲۰۸۵

[FarmaSOS.com](http://FarmaSOS.com)





THE PAGES OF THIS BROCHURE TELL A STORY. Not just of the 2009 SC, but also of one of the many ways we are working to reduce our environmental impact. The paper used, referred to in the printing industry as "Lexus Pursuit 30," is composed of 30% post-consumer waste<sup>15</sup>—the most we've ever used and 20% more than traditional brochures. It's also manufactured with 100% renewable electricity and has garnered just about every environmentally responsible acronym you can imagine. Including FSC and PEFC certifications. The printing facility that was used also has a long list of environmental achievements, including certification as the only one in the United States with virtually zero VOC emissions.

# امداد خودرو فارما

## WARRANTY

Four-year/50,000-mile Lexus Limited Warranty. Six-year/70,000-mile Powertrain Warranty. Six-year/unlimited-mileage Corrosion Perforation Warranty. All warranties with zero deductible. See the SC *Warranty and Services Guide* at your Lexus dealer for details.

تلفن شبانه روزی: ۰۸۵-۸۸۶۲۰۳۱

**1.** Mark Levinson is a registered trademark of Harman International Industries, Inc. **2.** Ratings achieved using the required premium unleaded gasoline with an octane rating of 91 or higher. If premium fuel is not used, performance will decrease. **3.** Performance figures are for comparison only and were obtained with prototype vehicles by professional drivers using special safety equipment and procedures. Do not attempt. **4.** 18-in performance tires are expected to experience greater tire wear than conventional tires. Tire life may be substantially less than 15,000 miles, depending on driving conditions. **5.** Run-flat tire technology is designed for limited emergency use only. If air pressure is lost, vehicle speed must remain below 55 mph; cornering, braking and acceleration must be done with extreme caution; and the tire should be replaced within 100 miles. Temporary spare is not provided with the run-flat tire option. Please see your Lexus dealer for details. **6.** The Navigation System is designed to assist in locating an address or point of interest. Discrepancies may be encountered between the system and your actual location. Road system changes may affect the accuracy of the information provided. Rely on your common sense to decide whether to follow a specified route. Detailed coverage not available in every city or roadway. Periodic updates available at an additional cost. Please see your *Navigation System Owner's Manual* for further details. **7.** The Bluetooth® technology phones listed on [lexus.com](http://lexus.com) have been tested for compatibility with Lexus vehicles. Performance will vary based on phone software version, coverage and your wireless carrier. Phones are warranted by their manufacturer, not Lexus. **8.** All the airbag ("AB") systems are Supplemental Restraint Systems. All ABs (if installed) are designed to inflate only under certain conditions and in certain types of severe collisions: frontal and knee ABs typically inflate in frontal collisions; side and side curtain ABs in side collisions; Roll-Sensing Curtain ABs at a severe tilt degree, roll or lateral G-Force. In all other accidents, the ABs will not inflate. To decrease the risk of injury from an inflating AB, always wear seatbelts, sit upright in the middle of the seat as far back as possible and do not lean against the door. Do not put objects in front of an AB or around the seatback. Do not use a rearward-facing child seat in any front passenger seat. The force of an inflating AB may cause serious injury or death. Please see your *Owner's Manual* for further information/warnings. **9.** The engine immobilizer is a state-of-the-art anti-theft system. The key transmits an electronic code to the vehicle. The engine will only start if the code in the transponder chip inside the key matches the code in the vehicle's immobilizer. Because the transponder chip is embedded in the key, it can be costly to replace. If you lose a key, your Lexus dealer can help, or you can find a qualified independent locksmith to perform high-security key services at [www.aloa.org](http://www.aloa.org). **10.** Continuous average power, all channels driven, at less than 0.01% THD; 20-20,000 Hz. **11.** Vehicle Stability Control (VSC) is an electronic system designed to help the driver maintain vehicle control under adverse conditions. It is not a substitute for safe driving practices. Factors including speed, road conditions and driver steering input can all affect whether VSC will be effective in preventing a loss of control. Please see your *Owner's Manual* for further details. **12.** Brake Assist is designed to help the driver take full advantage of the benefits of ABS. It is not a substitute for safe driving practices. Braking effectiveness also depends on proper brake-system maintenance and tire and road conditions. **13.** The Tire Pressure Monitor alerts the driver when tire pressure is critically low. For optimal tire wear and performance, tire pressure should be checked regularly with a gauge; do not rely solely on the monitor system. Please see your *Owner's Manual* for details. **14.** 2009 EPA-estimated mileage. Actual mileage may vary. **15.** Cover stock is composed of 10% post-consumer waste.

\*Lexus strives to build vehicles to match customer interest, and thus they typically are built with popular options and option packages. Not all options/packages are available separately, and some may not be available in all regions of the country. See [lexus.com](http://lexus.com) for information about options/packages commonly available in your area. If you would prefer a vehicle without any or with different options, contact your dealer to check for current availability or the possibility of placing a special order. Specifications, features, equipment, technical data, performance figures, options, and color and trim are based upon information available at time of printing, are subject to change without notice, are for mainland U.S.A. vehicles only. Some vehicles shown with available equipment. See your Lexus dealer for details. Lexus reminds you to wear seatbelts, secure children in rear seat, obey all traffic laws and drive responsibly. For more information, call 800-USA-LEXUS (872-5398) or visit [lexus.com](http://lexus.com). To learn more about your financing options, contact your Lexus dealer or call Lexus Financial Services at 800-874-7050.





THE PURSUIT OF PERFECTION.

# امداد خودرو فارما

تلفن شبانه روزی: ۰۲۱-۸۸۸۶۲۰۸۵

[FarmaSOS.com](http://FarmaSOS.com)

