

2008 LEXUS SC

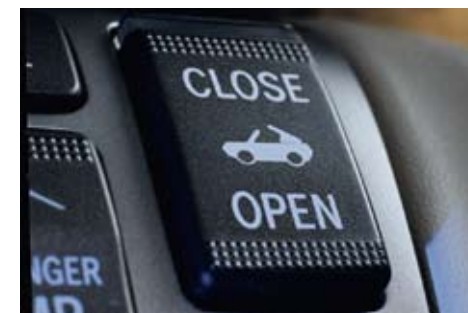


LEXUS

2008 LEXUS SC Exterior



Besides its sleek lines and alluring curves, the distinctive beauty of the SC exterior design is also dedicated to your comfort. A higher cockpit cowl, windshield position and rear wind deflector reduce drafts for a more comfortable ride. At the touch of a button, it converts from a sporting roadster to a stylish convertible in a mere 25 seconds. Without latches, snaps or covers, the aluminum-alloy roof folds itself neatly into the trunk, a process that occurs in near silence. When it is safely tucked away, a chime lets you know when to take your finger off the button. Perhaps equally impressive is the fact that the SC, when equipped with available run-flat tires,¹ offers a trunk with enough room for a full-size golf bag, beach tote or picnic lunch.



¹See page 17 for more information.

2008 LEXUS SC Interior Surroundings



When the top of the SC is down, its audio and climate-control systems automatically compensate for a variety of factors. The Mark Levinson® stereo² subtly raises its volume to allow for outside noise. Conversely, when you raise the roof, the stereo volume will lower to its previous level. The SC features Intuitive Climate Control that senses how much sun is shining on you, how fast you're traveling and whether the top is up or down. Depending on these factors, it will activate lap-level vents to provide a bit of extra cooled air. The same goes for driving at night, when lap vents will automatically help keep you warm.



²See page 17 for more information.

2008 LEXUS SC Performance



With an abundance of intuitive technologies, the SC is able to monitor and adjust over seven different systems of its operation. Variable Valve Timing with intelligence (VVT-i) allows the engine to sense its own speed and set valve timing for the best possible performance. Intuitive Powertrain Control manages throttle operation by computer, linking the engine and Electronically Controlled Transmission with intelligence (ECT-i) for nearly seamless operation. This system automatically compensates for uphill, downhill and headwinds, and even learns how you drive, giving more rpm in each gear to sportier drivers. And with the addition of a sixth gear, the SC provides quicker acceleration and virtually seamless shifting.

2008 LEXUS SC Interior



The interior of the SC features fine wood trim throughout the cabin and hand-stitched, leather-trimmed seating. Both front seats are heated and power-adjustable, with two-position memory systems that actually conform to your body for a custom fit. The memory system will even restore the steering wheel and side-view mirrors to your preferred positions. In addition, the handsome wood- and leather-trimmed steering wheel is equipped with audio controls in the interest of keeping your attention on the road ahead.

2008 LEXUS SC Interior (Continued)



The cockpit features rich wood consoles, with walnut-trimmed or espresso bird's-eye maple trimmed doors which can hide the audio and navigation systems. Every effort has been made to match the grain in adjacent pieces of wood, and the compartments open and close at the same rate of speed, resulting in a pleasing harmony within the cabin.

2008 LEXUS SC DVD Navigation System



Get lost in luxury, but not on the way to the destination, since the SC guides you with its GPS satellite-linked DVD Navigation System.³ It can direct you to over five million preprogrammed points of interest in the U.S. and Canada—including gas stations, ATMs, hotels, museums and restaurants. When using the system while the top is down, the display screen power-tilts to three different angles, helping to reduce glare. So it's easy to receive excellent directions without having to stop for them.

³See page 17 for more information.

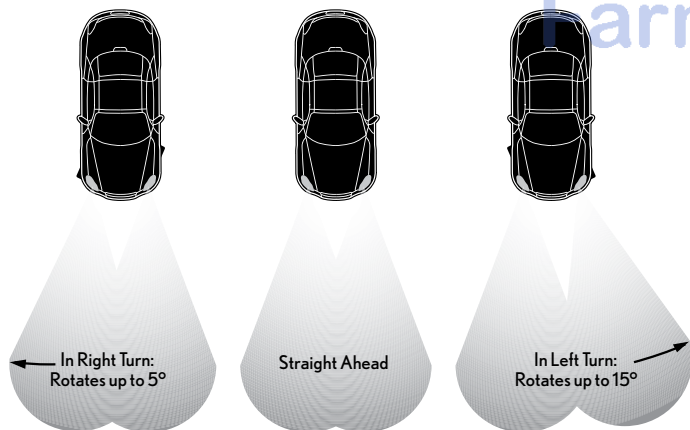
2008 LEXUS SC Mark Levinson® Audio System



For those particular about audio equipment, the SC features a sound system from Mark Levinson,² a company known for designing six-figure home audio systems. This custom-designed, nine-speaker, seven-channel, DSP-amplified system is exclusive to the SC, complete with an in-dash, six-disc CD auto-changer. The listening experience is so rich, it evokes the resonance of a live performance even while the top is down.

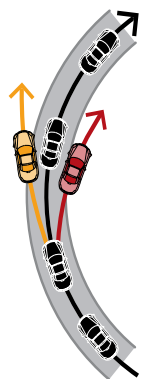
²See page 17 for more information.

2008 LEXUS SC Adaptive Front Lighting System



With an Adaptive Front Lighting System (AFS), the SC is able to illuminate more of the road around a curve for advanced visibility. In a left turn, the left headlamp will rotate up to 15 degrees into the turn. In a right turn, the right headlamp will pivot up to five degrees. The lighting system is equipped with High-Intensity Discharge (HID) headlamps, beaming whiter, brighter light than conventional halogen lamps.

2008 LEXUS SC Safety



The SC features an array of computerized handling features for added safety. Vehicle Stability Control (VSC)⁴ senses, and helps correct, a loss of traction in turns by applying brakes and throttle selectively to keep you on your intended course. Traction Control (TRAC) helps control wheelspin on surfaces like mud, sand and ice. Both work in harmony with anti-lock disc brakes (ABS), Brake Assist⁵ and Electronic Brakeforce Distribution (EBD) to help you maintain control.

^{4, 5} See page 17 for more information.

2008 LEXUS SC Safety (Continued)



With a rigid, steel-reinforced chassis, the SC is able to resist bending and twisting in hard cornering or while running over bumps and potholes. Special bracing behind the front wheels and in the rear cabin structure helps protect the cabin from deformation in front or rear impacts. And each door has been reinforced with two separate beams for added side-impact protection. Front airbags, as well as the knee airbags, are Supplemental Restraint Systems (SRS)⁶ designed to help protect the driver and front passenger in the event of a severe frontal collision. Front seat-mounted side airbags⁶ can help reduce the effect of certain types of severe broadside collisions. Furthermore, three-point seatbelts, equipped at the front with pre-tensioners and force limiters, as well as a collapsible steering column, crumple zones and impact-dissipating upper interior trim all help manage impact energy. And to help you avoid the inconvenience of a flat, the SC is equipped with a Direct Tire Pressure Monitor System⁷ and is available with run-flat tires.¹



^{1, 6, 7} See page 17 for more information.

2008 LEXUS SC Ownership Experience

And now your journey is ready to begin. The Lexus ownership experience is a magnificent journey within itself. Measured not in mileage, but in moments. Flashes in time that delight you, inspire you. That in whatever small way, enrich your life. You'll feel it in the peace of mind you get from our well-earned reputation for unparalleled vehicle quality and dependability. You'll feel it in the pride of knowing that Lexus puts a high priority on the wise use of natural resources as shown in the certification of every vehicle we build. And you'll feel it in our award-winning customer service, where every dealership goes to great lengths to accommodate you. This journey of Lexus ownership is the reason our owners are some of the most satisfied drivers on the road today. And why so many of them continue to return again and again. Because we understand that whether your travels take you to the vineyards for a weekend or simply around the block for errands, the miles of road left behind you will be a distant memory. But the moments along the way will last a lifetime.

CUSTOMER SATISFACTION

Your total and complete satisfaction is our highest priority. Which is why you may find our dealerships provide such amenities as offices you can use for business, free pickup and delivery, service loaner vehicles, complimentary car washes, concierge services and even 24-hour emergency Roadside Assistance* for your first four years of ownership.

RESPONSIBLE THINKING

As part of an effort to reduce emissions whenever possible, every Lexus vehicle built since 2004 has been certified as either a Low-Emission Vehicle (LEV), Ultra-Low Emission Vehicle (ULEV or ULEV II), or Super Ultra-Low Emission Vehicle (SULEV).

VALUE/DEPENDABILITY/QUALITY

Our commitment to build the finest vehicles in the world has not wavered since our inception. Seen in such ways as projected low repair costs and high retained value, our pursuit of perfection has never been stronger.



*Coverage only available in the continental U.S. and Canada. Please see your Lexus dealer for details on our Roadside Assistance program.

2008 LEXUS SC Options & Accessories



Of all the possible adjectives that could be used to describe the 2008 SC, *indulgent* just might top the list. After all, name another car that has such an abundance of standard features such as a DVD NAV system,³ fine premium leather, genuine walnut or espresso bird's-eye maple trim, a Mark Levinson® Premium Audio System² and 18-inch five-spoke alloy wheels.⁸ Something tells us you're not likely to find a close competitor. However, just for fun, we do offer a few extras. Like available all-season run-flat tires¹ to keep your SC on the road after a flat, no matter what the weather conditions. Or an available rear spoiler, which not only adds a nice character line to the SC, but makes it even more aerodynamic.

INDIVIDUAL OPTIONS AND ACCESSORIES*

18 x 8.0-in five-spoke Liquid Graphite-finish alloy wheels with 245/45VR18 summer or all-season run-flat tires^{1,8} • 245/45VR18 summer run-flat tires¹ • 245/45VR18 all-season run-flat tires¹ • Rear spoiler • Trunk mat • Cargo net • Car cover • 18-in G-Spider alloy wheels⁸ • 18-in Machined Tourmaline alloy wheels⁸ • Wheel locks

^{1, 2, 3, 8} See page 17 for more information. *Please see page 17 for more information regarding options/accessories/packages.

2008 LEXUS SC Specifications

BODY, DIMENSIONS

Type	Four-passenger retractable hardtop luxury convertible
Construction	Welded-steel unibody
Overall Length	178.5 in (4,534 mm)
Width	72.0 in (1,829 mm)
Height	53.1 in (1,349 mm)
Wheelbase	103.1 in (2,619 mm)
Curb Weight	3,840 lb (1,742 kg)
Fuel-Tank Capacity	19.8 gal (75 L)
Trunk Capacity	8.8 cubic feet (249 L) 9.4 cubic feet (266 L) (with available run-flat tires ¹)
Headroom	37.2/33.9 in (945/861 mm) (front/rear)
Legroom	43.6/27.1 in (1,107/688 mm) (front/rear)
Shoulder Room	55.7/49.5 in (1,415/1,257 mm) (front/rear)

ENGINE

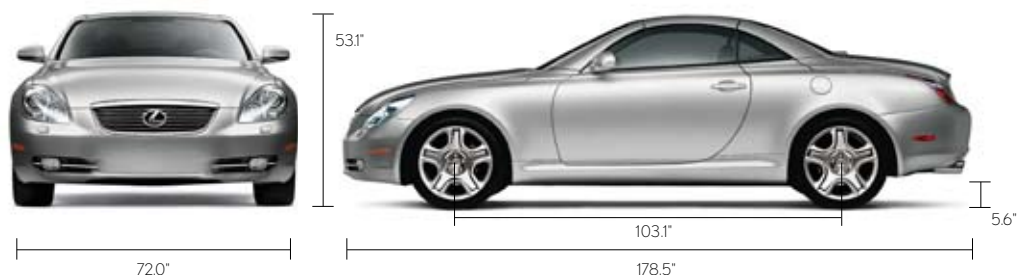
Type	90° V8, aluminum block and heads, certified Ultra-Low Emission Vehicle II (ULEV II)
Displacement	4.3 liters (262 cubic inches)
Valvetrain	Four cam, four valves per cylinder, with continuously Variable Valve Timing with intelligence (VVT-i)
Compression Ratio	10.5:1
Horsepower at RPM	288 hp @ 5,600 rpm ⁹
Torque at RPM	317 lb-ft @ 3,400 rpm ⁹

PERFORMANCE

0 - 60 MPH Acceleration	5.8 seconds ^{9/10}
1/4-Mile Acceleration	14.3 seconds ^{9/10}
Top Track Speed	149 mph (electronically limited) ^{9/10}
Fuel Consumption (estimated)	16/23 mpg (city/highway) ¹¹
Aerodynamic Drag Coefficient	0.31 (0.30 with optional rear spoiler)
Turning Circle	35.4 ft

DRIVETRAIN

Transmission	Six-speed sequential-shift automatic Electronically Controlled Transmission with intelligence (ECT-i)
Drive Wheels	Rear, with standard Vehicle Stability Control (VSC) ⁴
Final Drive Ratio	3.769:1



^{1,4,9,10,11} See page 17 for more information.

2008 LEXUS SC Specifications (Continued)

CHASSIS

Vehicle Stability Control (VSC) ⁴	Electronic system that monitors and helps control the loss of traction in a turn by using yaw-rate, deceleration, vehicle-speed and steering-wheel-angle sensors. Modulates engine power and applies individual brakes as necessary. Integrates Anti-lock Braking System (ABS), Brake Assist ⁵ and Traction Control (TRAC).
Suspension	Front: Independent, double-wishbone with coil springs, gas-pressurized shock absorbers with internal rebound springs and stabilizer bar. Rear: Independent, double-wishbone with coil springs, gas-pressurized shock absorbers and stabilizer bar.
Steering	Vehicle-speed-sensing, progressive power-assisted rack-and-pinion. 3.3 turns, lock to lock.
Brakes	Four-wheel power-assisted discs with four-sensor, four-channel Anti-lock Braking System (ABS), Electronic Brakeforce Distribution (EBD) and Brake Assist, ⁵ 11.7-in ventilated front, 12.1-in solid rear discs.
Wheels and Tires	18 x 8.0-in five-spoke alloy wheels with 245/40ZR18 summer tires. ⁸ Temporary spare tire on steel wheel. Optional wheels: 18 x 8.0-in five-spoke Liquid Graphite-finish alloy wheels. ⁸ Optional tires: 245/40VR18 summer or all-season run-flat tires. ¹

LUXURY

Brown walnut or espresso bird's-eye maple wood interior trim and shift knob • Leather-trimmed interior • Wood- and leather-trimmed steering wheel • Steering-wheel-mounted audio controls • Power tilt-and-telescopic steering column with automatic tilt-away • Voice-activated DVD Navigation System³ with Bluetooth[®] technology¹² • Mark Levinson[®] nine-speaker 240-watt @ less than 0.01% THD, 20-20,000 Hz¹³ Premium Audio System² with Automatic Sound Levelizer (ASL) and in-dash single-feed, six-disc CD auto-changer • Power mast antenna with FM-diversity system • 10-way driver's and front passenger's (including lumbar) power seats • Heated front seats • Height-adjustable headrests for all seats • Lexus Memory System to control power driver's and front passenger's seat (except lumbar), outside mirrors and steering wheel • Intuitive Climate Control with lap-level vents, interior air filter, smog sensor and automatic recirculation • Power-retractable aluminum-alloy roof • Power windows with one-touch auto open/close feature • Remote-linked window opening • Retained accessory power for windows • Electrochromic (auto-dimming) inside rearview mirror and outside mirrors • Cruise control • Power door locks • Multifunction, in-key remote entry system with rolling-code technology • Dual-compartment center console with accessory power outlet • HomeLink[®] universal transceiver to operate compatible garage, gate, home lighting and home security systems • Illuminated entry system and scuff plates • Electroluminescent instrumentation • Interior electronic trunk-lid and fuel-filler door releases • Lexus Personalized Settings (LPS)⁴ to customize electronic functions • Automatic on/off projector-beam headlamps with 30-second delay • Dual chrome exhaust tips • Rear wind deflector • Outside temperature gauge • Scheduled maintenance indicator light • Carpeted floor mats

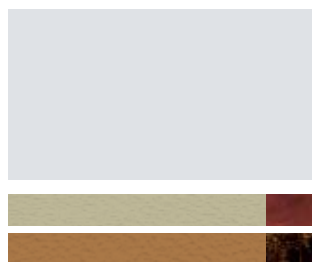
SAFETY & SECURITY

Driver's and front passenger's airbag system (SRS)⁶ • Front seat-mounted side airbags (SRS)⁶ • Driver's and front passenger's knee airbag system (SRS)⁶ • Three-point seatbelts for all seating positions, pre-tensioners with force limiters for front seats • Automatic Locking Retractor/Emergency Locking Retractor (ALR/ELR) seatbelts for all front-passenger seating position • Emergency Locking Retractor (ELR) for driver's seat • Child Restraint Seat (CRS) tether anchor brackets for rear seating positions • Four-wheel power-assisted disc brakes • Four-sensor, four-channel Anti-lock Braking System (ABS) • Vehicle Stability Control (VSC)⁴ • Traction Control (TRAC) • Brake Assist⁵ • Electronic Brakeforce Distribution (EBD) • Direct Tire Pressure Monitor System⁷ • Rigid body structure with front and rear crumple zones • Collapsible steering column • Dual side-impact door beams • Reinforcements in pillars and doorsills • Impact-dissipating upper interior trim • High-Intensity Discharge (HID) headlamps with dynamic auto leveling • Adaptive Front Lighting System (AFS) • Headlamp washers • Daytime running lights • Integrated foglamps • LED taillamps • Water-repellent door glass • Variable intermittent windshield wipers with mist cycle • Rear-window defogger with auto-off timer • Power-adjustable outside mirrors with timed defoggers • Vehicle theft-deterrent and engine immobilizer system with in-key transponder • Emergency interior trunk release • First aid kit • Tool kit

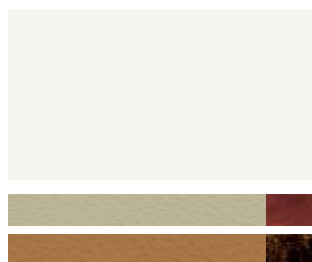
^{12,3,4,5,6,7,8,12,13,14} See page 17 for more information.

2008 LEXUS SC Colors

EXTERIOR COLORS



MERCURY METALLIC
Ecru or Camel Leather



STARFIRE PEARL
Ecru or Camel Leather



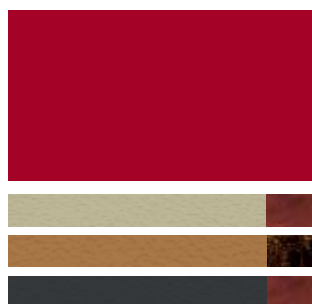
OBSIDIAN
Ecru, Camel, or Black Leather



GOLDEN ALMOND METALLIC
Ecru or Camel Leather



TWILIGHT AMETHYST PEARL
Ecru or Camel Leather



MATADOR RED MICA
Ecru, Camel, or Black Leather



SMOKY GRANITE MICA
Ecru, Camel, or Black Leather



BLACK SAPPHIRE PEARL
Ecru or Camel Leather



TIGEREYE MICA
Camel Leather

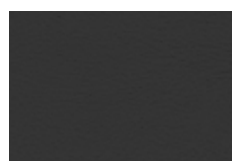
INTERIOR COLORS



ECRU LEATHER

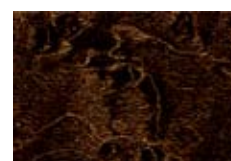


CAMEL LEATHER



BLACK LEATHER

WOOD TRIM



**ESPRESSO BIRD'S-EYE
MAPLE**



BROWN WALNUT

See your Lexus dealer for exact vehicle colors.



2008 LEXUS SC Warranty

WARRANTY

Four-year/50,000-mile Lexus Limited Warranty. Six-year/70,000-mile Powertrain Warranty. Six-year/unlimited-mileage Corrosion Perforation Warranty. All warranties with zero deductible. See the *SC Warranty and Services Guide* at your Lexus dealer for details.

FOOTNOTES & DISCLAIMERS

1. Run-flat tire technology is designed for limited emergency use only. If air pressure is lost, vehicle speed must remain below 55 mph; cornering, braking and accelerating must be done with extreme caution; and the tire should be replaced within 100 miles. See your Lexus dealer for details. **2.** Mark Levinson is a registered trademark of Harman International Industries, Inc. **3.** The Navigation System is designed to assist in locating an address or point of interest. Discrepancies may be encountered between the system and your actual location. Road system changes may affect the accuracy of the information provided. Rely on your common sense to decide whether to follow a specified route. Detailed coverage not available in every city. Periodic updates available at an additional cost. See your *Navigation System Owner's Manual* for further details. **4.** Vehicle Stability Control (VSC) is an electronic system designed to help the driver maintain vehicle control under adverse conditions. It is not a substitute for safe driving practices. Factors including speed, road conditions and driver steering input can all affect whether VSC will be effective in preventing a loss of control. Please see your *Owner's Manual* for further details. **5.** Brake Assist is designed to help the driver take full advantage of the benefits of ABS. It is not a substitute for safe driving practices. Braking effectiveness also depends on proper brake-system maintenance and tire and road conditions. **6.** All the airbag ("AB") systems are Supplemental Restraint Systems. All ABs (if installed) are designed to inflate only under certain conditions and in certain types of severe collisions: frontal and knee ABs typically inflate in frontal collisions; side and side curtain ABs in side collisions; Roll-Sensing Curtain ABs at a severe tilt degree, roll or lateral G-force. In all other accidents, the ABs will not inflate. To decrease the risk of injury from an inflating AB, always wear seatbelts, sit upright in the middle of the seat as far back as possible and do not lean against the door. Do not put objects in front of an AB or around the seatback. Do not use a rearward-facing child seat in any front passenger seat. The force of an inflating AB may cause serious injury or death. Please see your *Owner's Manual* for further information/warnings. **7.** The Lexus Tire Pressure Monitor System alerts the driver when tire pressure is critically low. For optimal tire wear and performance, tire pressure should be checked regularly with a gauge; do not rely solely on the monitor system. See your *Owner's Manual* for details. **8.** 18-in tires are expected to experience greater tire wear than conventional tires. Tire life may be substantially less than 15,000 miles, depending on driving conditions. See your Lexus dealer for details and other information relating to tire selection. **9.** Ratings achieved using the required premium unleaded gasoline with an octane rating of 91 or higher. If premium fuel is not used, performance will decrease. **10.** Performance figures are for comparison only and were obtained with prototype vehicles by professional drivers using special safety equipment and procedures. Do not attempt. **11.** EPA-estimated mpg: Actual mileage will vary. **12.** The Bluetooth® technology phones listed on lexus.com have been tested for compatibility with Lexus vehicles. Performance will vary based on phone software version, coverage and your wireless carrier. Phones are warranted by their manufacturer, not Lexus. **13.** Continuous average power, all channels driven, at less than 0.01% THD; 20-20,000 Hz. **14.** The Lexus Personalized Settings (LPS) Program is a one-time, complimentary offer for the first 12 months from the date the vehicle is sold. Please see your Lexus dealer for more information.

*Lexus strives to build vehicles to match customer interest and thus they typically are built with popular options and option packages. Not all options/accessories/packages are available separately and some may not be available in all regions of the country. See lexus.com for information about options/accessories/packages commonly available in your area. If you would prefer a vehicle with no or different options, contact your dealer to check for current availability or the possibility of placing a special order.

Specifications, features, equipment, technical data, performance figures, options, and color and trim are based upon information available at time of posting, are subject to change without notice, are for mainland U.S.A. vehicles and may differ in the state of Hawaii, Puerto Rico, the U.S. Virgin Islands and in other regions.

Some vehicles shown with available equipment. Available equipment listed may not be available separately or in all regions. See your Lexus dealer for details. Lexus reminds you to wear seatbelts, secure children in rear seat, obey all traffic laws and drive responsibly.

For more information, call 800-USA-LEXUS (872-5398). To learn more about your financing options, contact your Lexus dealer or call Lexus Financial Services at 800-874-7050.

All photographs appearing in this e-brochure are the copyrighted property of the photographers contracted by or on behalf of Lexus and may not be reproduced in any way whatsoever without prior written permission from both Lexus and the applicable photographer(s) or their authorized agent(s).

©2007-2008 Lexus, a Division of Toyota Motor Sales, U.S.A., Inc. All information contained herein applies to U.S. vehicles only.