

LS امداد خودرو فارما

14

تلفن شبانه روزی: ۰۲۱-۶۲۰۸۵۰۰

FarmasOS.com



LS 460 386-hp,¹ 4.6-liter V8 and an eight-speed automatic Electronically Controlled Transmission with intelligence (ECT-i). Dual-zone climate control with smog sensor, Drive Mode Select and Navigation System² with 12.3-inch multimedia display. Available with RWD or AWD and short or long wheelbase.

LS 460 F SPORT Signature mesh grilles, genuine aluminum interior trim and 19-inch forged-alloy wheels³ by BBS. A limited-slip rear differential (RWD), high-performance Brembo[®] front brakes,⁴ sport-tuned and lowered Adaptive Variable Air Suspension and a paddle-shift transmission with downshift rev-matching (RWD). Available with RWD or AWD.

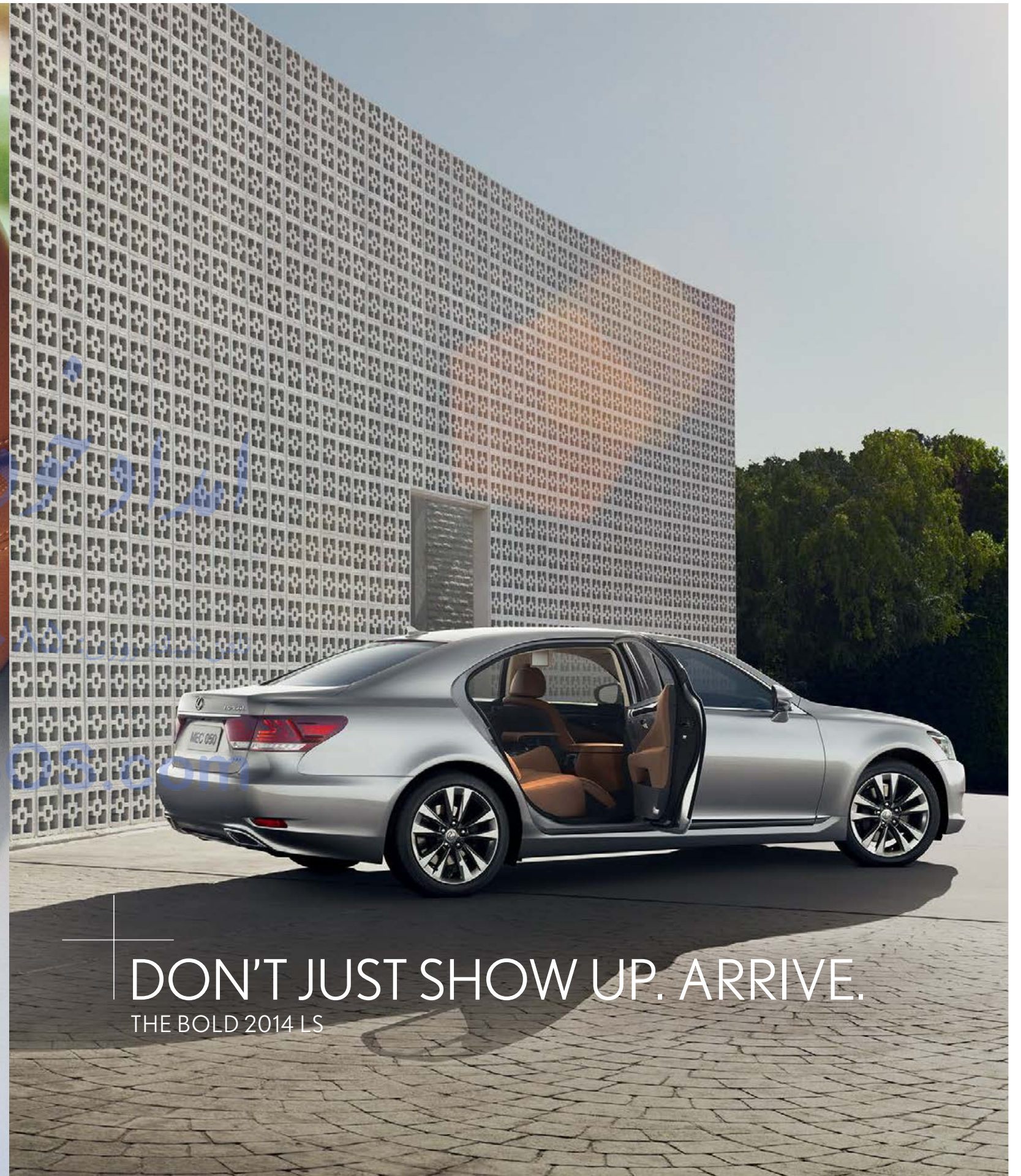
LS 600h A 5.0-liter V8 paired with Lexus Hybrid Drive and an Electronically controlled Continuously Variable Transmission (ECTV). 438 total system horsepower.¹ Mark Levinson[®] 19-speaker Reference Surround Sound Audio System,⁵ climate-comfort front seats and heated steering wheel. Full-time AWD.



COMMANDS ROADS.
DEMANDS ATTENTION.



فارس فارما
۰۲۱-۸۸۶۲۰۰۰۰
FarmaS



DON'T JUST SHOW UP. ARRIVE.
THE BOLD 2014 LS



**F SPORT
PERFORMANCE**

With a 386-hp¹ V8 engine, the LS is already an imposing figure. But with the F SPORT, it becomes even more impressive, both inside the vehicle and out. Inspired by the world-renowned Lexus LFA supercar, the LS F SPORT is aggressively styled to match its exhilarating performance. Rear-wheel drive models feature a limited-slip rear differential and downshift rev-matching to help you achieve an unparalleled experience behind the wheel.



FarmaSOS.com

**F SPORT
DESIGN**

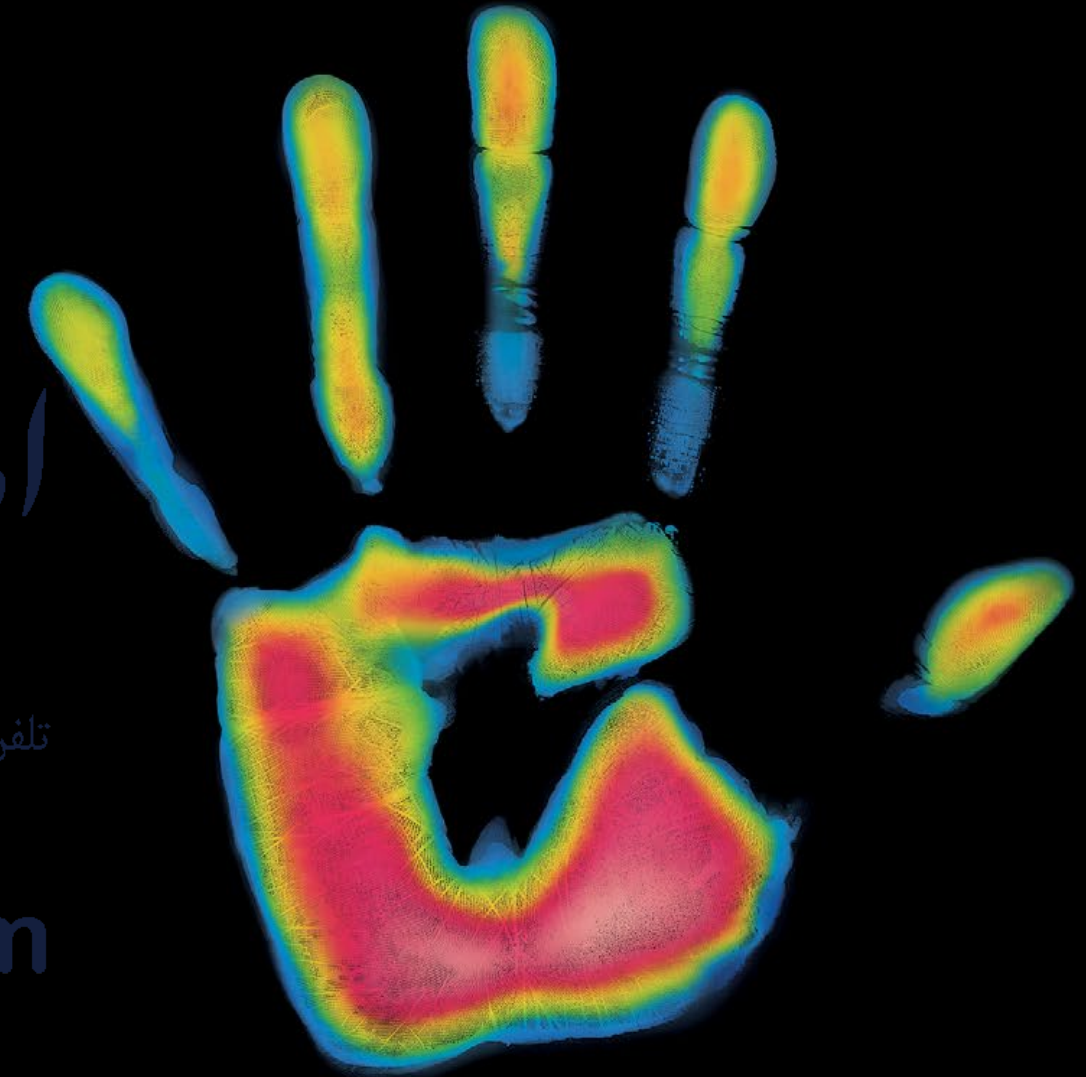
The LS F SPORT goes above and beyond to deliver an intense driving experience. The bolstered front seats help keep you firmly planted throughout each and every breathtaking turn. Wrap your hands around the unique steering wheel and become one with such features as paddle shifters, a perforated genuine leather grip and an available heater. And aluminum trim with a unique design enhances the LS F SPORT's aggressive nature.

IT DOESN'T JUST COMFORT YOU. IT ADAPTS TO YOU.

امداد خودرو فارما

تلفن شبانه روزی: ۰۲۱-۸۸۸۶۲۰۸۵

FarmaSOS.com



While conventional climate-control systems respond to cabin temperatures, the LS has an available infrared sensor to measure the surface temperature of rear-seat occupants. It then automatically adjusts the climate to surround each person with his or her own individualized level of comfort. From the cabin to the seats to the steering wheel, every possible human touch point has been evaluated and considered, resulting in the ultimate level of comfort and ease.

CUTTING-EDGE TECHNOLOGY DOWN TO THE LAST 12.3 INCHES.



ENFORM WITH APP SUITE

With a spectacular 12.3-inch split-screen multimedia display, the available Lexus Enform⁶ and Safety Connect^{®7} offer more than the convenience of live, 24-hour navigation assistance and emergency services at the press of a button. With the subscription-free App Suite⁶ making dinner reservations and ordering movie tickets has never been easier. Using your voice, Siri[®] Eyes Free⁸ enables you to check e-mails, send text messages and more.



ADAPTIVE VARIABLE AIR SUSPENSION

By monitoring the road surface, vehicle speed and your own driving style, available AVS automatically adjusts the shock absorbers' damping force to help provide optimal comfort and control—helping you to carve through corners with precision. And the Variable Gear-Ratio Steering system automatically adjusts the steering gear ratios for easier low-speed maneuvering and increased high-speed responsiveness and control.



CRAFTSMANSHIP

Impeccable craftsmanship can be found in every corner of the LS, from the supple leather trim to the vertical design of the LED foglamps. But perhaps the finest example is the stunning design of the available *Shimamoku* Espresso-trimmed steering wheel and matching interior accents, which combines the organic feel of natural wood with a layered appearance that evokes modern art. It takes 67 steps of craftsmanship and 38 days to create this remarkably unique look.



ADVANCED PRE-COLLISION

The available Advanced Pre-Collision System (PCS)⁹ is engineered to detect an imminent frontal collision and, while retracting the front seatbelts, automatically helps to provide increased braking pressure the moment you step on the brake pedal. It's also designed to detect three-dimensional objects in the vehicle's path, and not only can it apply the brakes to reduce vehicle speed, it can actually bring the car to a stop at speeds up to 24 mph.



NOISE-REDUCTION WHEELS

The LS is the first Lexus to feature noise-reduction wheels, which force resonant noise into an opening where the sympathetic vibrations cancel each other out and significantly reduce road noise. This means that instead of being distracted by unwanted sounds, you get to hear the things you actually want to hear, like the precisely tuned engine note or the pristine clarity of the audio system.



FRONT LIGHTING

The Adaptive Front Lighting System¹⁰ turns the headlamps in the direction you're steering to help provide added visibility for drivers, even those not in an LS. Available intelligent high-beam headlamps¹¹ offer added illumination when the road ahead is clear and temporarily switch to low beam when they sense another vehicle ahead. Along with its striking appearance, the LS is also the first Lexus to offer energy-efficient LEDs for all exterior lamps.



VARIABLE DRIVING MODES

Drive Mode Select's Sport mode alters the powertrain by holding lower gears longer and providing more dynamic throttle response. The available Sport S+ pushes the suspension and steering systems to deliver enhanced acceleration and responsiveness. Comfort mode provides a smoother ride. And if you choose ECO mode, the throttle response and climate-control system are moderated for increased fuel efficiency.



MULTI-DIMENSIONAL AUDIO

Engineers and technicians spent over 2,000 hours tuning the available 19-speaker, 450-watt Mark Levinson Reference Surround Sound Audio System⁵ so that the sound quality in the LS would rival the finest concert halls. And to audiophiles around the world, it will come as no surprise that the 71-channel architecture delivers dimensional sound and musical clarity once reserved for top-of-the-line home-theater systems.



**HYBRID
PERFORMANCE**

The flagship of the Lexus brand, the LS 600h L is infused with innovation. From launch, it was the world's first prestige luxury and AWD V8 hybrid. With 438 total system horsepower¹ and a 0-to-60 time of 5.6 seconds,^{1,2} the LS 600h L pairs a powerful 5.0-liter V8 gasoline engine with cutting-edge Lexus Hybrid Drive technology. The result is a feeling of smooth, seamless power that you just can't get in a conventional automobile.



امداد خودرو فارما

تلفن شبانه روزی: ۰۲۱-۸۸۸۶۲۰۸۵

FarmaSOS.com

امداد خودرو فارما

تلفن شبانه روزی: ۰۸۵-۸۸۸۶۲۰۲۱

FarmaSOS.com

“DESIGNERS SPENT A LOT OF TIME THINKING ABOUT THE INTERIOR OF THE LS, AND CRAFTSMEN OBVIOUSLY TOOK GREAT CARE CARRYING OUT THAT VISION.”

– BLOOMBERG (reviewing the LS FSPORT), MARCH 14, 2013



امداد خودرو فارما

تلفن: ۰۲۱-۸۸۶۲۰۰۰۰

FarmaSOS.com

The already exceptionally spacious LS gives you even more space with a long wheelbase on the LS 460L and LS 600h L. To make the most of this expanse, an available Executive-Class Seating Package* replaces the standard rear seating. Both rear seats have power-reclining capability, and the right-rear seat has a built-in ottoman-style leg rest^{13,14} and an indulgent shiatsu massager. There's even a retractable wood-trimmed console table that swivels into place at your convenience.



A. Available Mark Levinson Reference Surround Sound Audio System⁵ **B.** Remote Touch¹⁵ and Drive Mode Select **C.** Available Rear-Seat Entertainment System (RSES) with 9.0-in screen and Blu-ray/DVD player **D.** Analog clock **E.** Flaxen leather with available Ultra Luxury Package **F.** Power moonroof



G. LS F SPORT electroluminescent instrumentation and paddle shifters **H.** LED taillamps **I.** Light Gray leather with available Executive-Class Seating Package **J.** Available Shimamoku Espresso wood-trimmed steering wheel **K.** Available power rear-door sunshades **L.** Available rear bumper appliqué. For complete list of Genuine Lexus Accessories, visit lexus.com/LS/accessories.





امداد خودرو فارس

تلفن شبانه روزی: ۰۸۵-۸۸۸۶۲۰۳۱

FarmSOS.com

**ALL-WEATHER
DRIVE**

To help provide you with even more command of the road, all-wheel drive (AWD) is available on every LS. The system distributes power to the wheels with the best grip, helping to improve traction, road feel and control while delivering greater command during acceleration and cornering.

KEY STANDARD FEATURES

SmartAccess^{16,17} with push-button Start/Stop // Dual-zone automatic climate control with interior air filter, smog sensor and automatic recirculation mode // Scratch-resistant clearcoat // Navigation System² with Remote Touch¹⁵ device, 12.3-inch multimedia center-console display with integrated backup camera¹⁸ // Subscription-free Lexus Enform App Suite⁶ // Leather-trimmed interior // Drive Mode Select // Intuitive Parking Assist // LED daytime running lights // 10 standard airbags¹⁹ // LED foglamps

For complete list, visit lexus.com/LS/features

INDIVIDUAL OPTIONS

Blind Spot Monitor²⁰ with Rear Cross-Traffic Alert²¹ (standard on LSh) // Adaptive Variable Air Suspension with Variable Gear-Ratio Steering (VGRS), Comfort and Sport S+ drive modes (standard on LSh) // Pre-Collision System²² with all-speed Dynamic Radar Cruise Control²³ // LED headlamps and intelligent high-beam headlamps¹¹ (standard on LSh) // Lexus Enform⁶ with Destination Assist and eDestination. Subscription required. One-year subscription included // Mark Levinson 19-speaker, 450-watt Reference Surround Sound Audio System⁵ with 7.1-channel architecture and DVD/CD player (standard on LSh) // Heated steering wheel (standard on LS AWD, LSh)

For complete list, visit lexus.com/LS/options

PACKAGES

COMFORT PACKAGE (Standard on LS LWB, LSh)

Front-seat Climate Concierge with climate-comfort front seats // Heated outboard rear seats (AWD only) // Power rear sunshade // Power trunk open/close

SEMI-ANILINE LEATHER AND ALCANTARA® UPGRADE PACKAGE (Standard on LSh)

Semi-aniline leather-trimmed interior // Alcantara headliner // Wood trim on rear ventilation outlets

ULTRA LUXURY PACKAGE (Standard on LSh)

Four-zone climate control, including rear overhead ducts and Air Purifier // Four-zone Climate Concierge with climate-comfort front and outboard rear seats // Power rear sunshade (standard on LS LWB) // Power rear-door sunshades // Power-adjustable outboard rear seats with memory, two-way power lumbar support, lumbar massage and outboard rear butterfly headrests // Wood-trimmed climate and audio controls in rear-center armrest // Power trunk open/close (standard on LS LWB) // Rear-seat cool box (excluding LSh) // Rear seat-mounted side airbags (SRS)¹⁹

EXECUTIVE-CLASS SEATING PACKAGE (Available on LS LWB, LSh only)

(Includes Semi-Aniline Leather and Alcantara Upgrade Package) + Four-zone climate control, including rear overhead ducts, Air Purifier and infrared rear-passenger temperature sensor; four-zone Climate Concierge and climate-comfort rear seats (standard on LSh) // Power-adjustable rear seats with memory and two-way power lumbar support; power-adjustable outboard rear butterfly headrests (standard on LSh) // Right-rear power recliner with ottoman^{13,14} and multifunction shiatsu massage // Wood- and leather-trimmed rear-center console with climate and audio controls, and retractable wood-trimmed table // Rear-seat cool box (excluding LSh) // Power rear and rear-door sunshades (standard on LSh) // Rear-Seat Entertainment System (RSES) with Blu-ray/DVD player, 9.0-inch screen and wireless headphones²⁴ // Leather-trimmed instrument panel and glovebox door (standard on LSh) // Rear seat-mounted side airbags (SRS)¹⁹ (standard on LSh)

ADVANCED PRE-COLLISION SYSTEM PACKAGE (Available on LS LWB, LSh only)

Pre-Collision System⁹ with all-speed Dynamic Radar Cruise Control²³ // Active Pedestrian Detection System²⁵ with infrared and stereo-camera technology // Driver Attention Monitor²⁶ with closed-eye detection // Lane Keep Assist²⁷ // Low-speed frontal collision avoidance assist

ALL-WEATHER PACKAGE (Standard on LS AWD, LSh)

Windshield-wiper deicer and headlamp washers // Enhanced interior heater for faster heat output in cold weather // Higher-capacity vehicle battery

LS F SPORT

(Includes all LS standard equipment) + F SPORT exterior styling including front bumper, upper and lower grille inserts, rear diffuser // 19-inch split-10-spoke forged alloy wheels³ by BBS // Brembo[®] opposed six-piston front brake calipers with 14.8-in ventilated discs⁴ // TORSEN[®] limited-slip rear differential²⁸ (RWD only) // F SPORT-tuned, lowered Adaptive Variable Air Suspension, stabilizer bars and shock absorbers // Variable Gear-Ratio Steering (VGRS) // Black leather-trimmed interior with white perforations // F SPORT bolstered front seats with embossed headrests // Paddle shifters // Downshift rev-matching (RWD only) // Black Alcantara headliner // Aluminum pedals and interior trim // Headlamp washers

For complete list, visit lexus.com/LS/packages
For complete list of Genuine Lexus Accessories, visit lexus.com/LS/accessories

WHEELS



18-in split-five-spoke alloy wheels³
STANDARD LS



19-in split-10-spoke forged alloy wheels³ by BBS
STANDARD LS F SPORT



19-in split-seven-spoke alloy wheels³
STANDARD LSh
AVAILABLE LS



19-in 15-spoke alloy wheels³
AVAILABLE LS

For more info, visit lexus.com/LS/wheels

KEY SPECS

4.6L V8

LS

5.0L V8

LSh + Lexus Hybrid Drive

0-60 IN 5.4_{S1,12} / 6.0_{S1,12} / 5.6_{S1,12}

LS RWD

LS AWD

LSh

ENGINE

PERFORMANCE

386_{HP1}

LS RWD

360_{HP1}

LS AWD

438_{HP1} TOTAL SYSTEM

LSh

RWD OR AWD

STD. LS

STD. LSh
AVAIL. LS

HORSEPOWER

DRIVETRAIN

8-SPEED

LS

ECVT

LSh

PADDLE-SHIFT AUTOMATIC TRANSMISSION (LS F SPORT); AUTOMATIC TRANSMISSION

ELECTRONICALLY CONTROLLED CONTINUOUSLY VARIABLE TRANSMISSION

16 / 24 / 19²⁹ // 16 / 23 / 18²⁹ // 19 / 23 / 20²⁹ EST MPG

LS RWD

LS AWD

LSh

FUEL ECONOMY, EPA-ESTIMATED RATINGS (CITY / HIGHWAY / COMBINED)



WIDTH

73.8 IN

HEIGHT

57.3 IN (LS F SPORT)

58.1 IN (LS)

57.7 IN (LS w/Air Suspension)

58.3 IN (LSh)



WHEELBASE

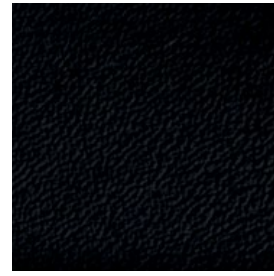
116.9 IN (LS, LS F SPORT), 121.7 IN (LS LWB, LSh)

OVERALL LENGTH

200.0 IN (LS, LS F SPORT), 205.0 (LS LWB, LSh)

For complete specs, visit lexus.com/LS/specs

INTERIOR



BLACK
LEATHER



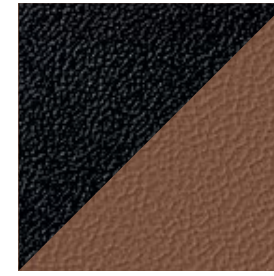
PARCHMENT
LEATHER



LIGHT GRAY
LEATHER



FLAXEN
LEATHER

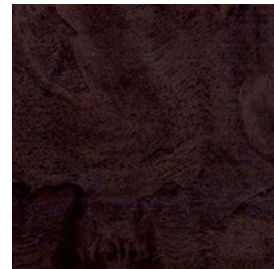


BLACK AND
SADDLE TAN
LEATHER

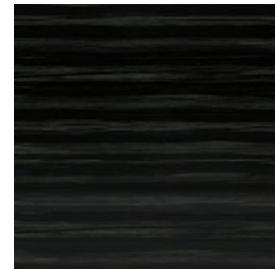


BLACK WITH WHITE
PERFORATIONS*
LEATHER

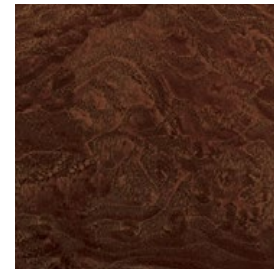
TRIM



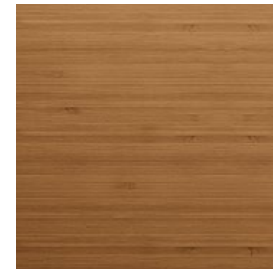
DARK BROWN
WALNUT



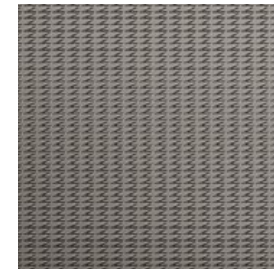
SHIMAMOKU
ESPRESSO WOOD



MATTE DARK
BROWN ASH BURL



MATTE BAMBOO**



GENUINE
ALUMINUM*

EXTERIOR



STARFIRE PEARL



LIQUID PLATINUM



NEBULA GRAY PEARL



OBSIDIAN



MATADOR RED MICA



SATIN CASHMERE METALLIC



FIRE AGATE PEARL



ULTRA WHITE*

LEATHER INTERIOR	EXTERIOR								TRIM				
	Starfire Pearl	Liquid Platinum	Nebula Gray Pearl	Obsidian	Matador Red Mica	Satin Cashmere Metallic	Fire Agate Pearl	Ultra White*	Dark Brown Walnut	Shimamoku Espresso Wood	Matte Dark Brown Ash Burl	Matte Bamboo**	Genuine Aluminum*
Black	●●	●●	●●	●●	●●	●●	●●			●●		●●	
Parchment	●●			●●	●●	●●	●●		●●			●●	
Light Gray	●●	●●	●●	●●	●●					●●			
Flaxen	●●	▲●●	▲●●	▲●●	▲●●	●●	●●	▲		●●			▲
Black and Saddle Tan	●●	●●	●●	●●	●●		●●				●●		
Black with White Perforations*		▲	▲	▲	▲			▲					▲

● LS

■ LSh

▲ FSPORT

* FSPORT only

** Requires Semi-Aniline Leather and Alcantara Upgrade Package or Executive-Class Seating Package (LS)

"A SMOOTH, CIVILIZED BEAST."

—MAXIM (on the LS F SPORT), APRIL 10, 2013

WARRANTY Four-year/50,000-mile Lexus Limited Warranty. Six-year/70,000-mile Powertrain Warranty. Six-year/unlimited-mileage Corrosion Perforation Warranty. All warranties with zero deductible. See the *LS Warranty and Services Guide* at your Lexus dealer for details. **DISCLOSURES** 1. Ratings achieved using the required premium unleaded gasoline with an octane rating of 91 or higher. If premium fuel is not used, performance will decrease. 2. Availability and accuracy of the information provided by the Navigation System or any SiriusXM™ and/or HD Radio™ services mentioned (if installed) are dependent upon many factors. Use common sense when relying on information provided. Services not available in every city or roadway. Periodic Enform app updates do not include Navigation updates. Navigation updates are available at an additional cost from your local dealer. See *Navigation Owner's Manual* or contact SiriusXM for details. 3. 18- or 19-in performance tires are expected to experience greater tire wear than conventional tires. Tire life may be substantially less than 15,000 miles, depending upon driving conditions. 4. High-friction brakes require periodic inspection and measurement as outlined in the *Warranty and Services Guide*. The pads and rotors are expected to experience greater wear than conventional brakes. Pad life may be less than 20,000 miles, and brake rotor life may be less than 50,000 miles depending on driving conditions. LS F SPORT features Brembo® brakes. It is an inherent characteristic of materials and design of brake pads used in this high-performance brake system that brake noise/squeal may result. 5. Mark Levinson® is a registered trademark of Harman International Industries, Inc. 6. Always drive safely, obey traffic laws & focus on the road while driving. Apps/services vary by phone/carrier; functionality depends on many factors. Select apps use large amounts of data, you are responsible for all charges. Apps/services are subject to change. Apps identified by ™ or ® are trademarks or registered trademarks of their respective companies. For enrollment, cost and more details, see lexus.com/enform. 7. Contact with the response center may not be available in all areas. Service Agreements required. A variety of subscription terms available; charges will vary. See lexus.com for details. 8. Always drive safely, obey traffic laws & focus on the road while driving. Siri® is available in Beta only on iPhone® 4S, iPhone® 5, iPad® with Retina® display, iPad® mini, & iPod® touch, 5th gen. & requires Internet access. Siri® is not available in all languages or all areas & features vary by area. Data charges may apply. See Apple.com & phone carrier for details. 9. Advanced Pre-Collision System is designed to help reduce the crash speed and damage in certain frontal collisions only. Driver Attention Monitor is designed to alert the driver if a potential hazard is detected ahead and the driver's face appears to be turned away. They are not collision-avoidance systems and are not substitutes for safe and attentive driving. System effectiveness depends on many factors. See *Owner's Manual* for details. 10. The Adaptive Front Lighting System helps improve vision at night. Situations such as dirty windshield, rapidly changing light conditions or hilly terrain will limit effectiveness, requiring the driver to manually turn off. See *Owner's Manual* for details. 11. Intelligent high-beams system operates at speeds above 21 mph. Situations such as a dirty windshield, variable weather, lighting conditions and hilly terrain will limit effectiveness, requiring the driver to manually turn off. See *Owner's Manual* for details. 12. Performance figures are for comparison only and were obtained with prototype vehicles by professional drivers using special safety equipment and procedures. Do not attempt. 13. Leg rest may not fully recline based on height of rear-seat passenger. Do not allow passengers to sit in a seat that has been fully or severely reclined while driving. This feature is intended for use only when the vehicle is parked. While the vehicle is being driven, all vehicle occupants should have the seatback upright, sit well-back in the seat and properly wear the seatbelts provided. In the event of a collision, the more the seat is reclined, the greater the risk of death or personal injury. See *Owner's Manual* for additional information. 14. If leg rest is in use, seating capacity could be reduced from four to three. 15. Be sure to obey traffic regulations and maintain awareness of road and traffic conditions. 16. The SmartAccess system may interfere with some pacemakers or cardiac defibrillators. If you have one of these medical devices, please talk to your doctor to see if you should deactivate this system. 17. The engine immobilizer is a state-of-the-art anti-theft system. When you insert your key into the ignition switch or bring a SmartAccess fob into the vehicle, the key transmits an electronic code to the vehicle. The engine will only start if the code in the transponder chip inside the key/fob matches the code in the vehicle's immobilizer. Because the transponder chip is embedded in the key/fob, it can be costly to replace. If you lose a key or fob, your Lexus dealer can help. Alternatively, you can find a qualified independent locksmith to perform high-security key services by consulting your local *Yellow Pages* or by contacting alooa.org. 18. The backup camera does not provide a comprehensive view of the rear area of the vehicle. You should also look around outside your vehicle and use your mirrors to confirm rearward clearance. Cold weather may limit effectiveness and view may become cloudy. 19. All the airbag (AB) systems are Supplemental Restraint Systems. All ABs (if installed) are designed to inflate only under certain conditions and in certain types of severe collisions: frontal and knee ABs typically inflate in frontal collisions; side and side curtain ABs in side collisions; Roll-Sensing Curtain ABs at a severe tilt degree, roll or lateral G-force. In all other accidents, the ABs will not inflate. To decrease the risk of injury from an inflating AB, always wear seatbelts, sit upright in the middle of the seat as far back as possible and do not lean against the door. Do not put objects in front of an AB or around the seatback. Do not use a rearward-facing child seat in any front passenger seat. The force of an inflating AB may cause serious injury or death. See *Owner's Manual* for further information/warnings. 20. Do not rely exclusively on the Blind Spot Monitor. Always look over your shoulder and use your turn signal. There are limitations to the function, detection, range and clarity of the monitor. For a complete list of limitations and directions regarding use of the monitor, see *Owner's Manual*. 21. Do not rely exclusively on the Rear Cross-Traffic Alert system. Always look over your shoulder and use your mirrors to confirm rear clearance. There are limitations to the function, detection, range and clarity of the system. To learn more, see *Owner's Manual*. 22. The Pre-Collision System is designed to help reduce the crash speed and damage in certain frontal collisions only. It is not a collision-avoidance system and is not a substitute for safe and attentive driving. System effectiveness depends on many factors, such as speed, driver input and road conditions. See *Owner's Manual* for further information. 23. Dynamic Radar Cruise Control is designed to assist the driver and is not a substitute for safe and attentive driving practices. See *Owner's Manual* for details. 24. Headphones are for passenger use only. Do not use while operating vehicle. 25. The Pedestrian Detection System, part of the Advanced Pre-Collision System, is designed to detect the presence of a pedestrian ahead of the vehicle, to determine if impact with the pedestrian is imminent and to help reduce impact speed. It is not a collision-avoidance system and is not a substitute for safe and attentive driving. System effectiveness depends on many factors, such as speed, size and position of pedestrians, driver input and weather, light and road conditions. See *Owner's Manual* for further information. 26. The Driver Attention Monitor is designed to alert the driver if a potential hazard is detected ahead and the driver's face appears to be turned away. It is not a collision-avoidance system and is not a substitute for safe and attentive driving. System effectiveness depends on many factors. See *Owner's Manual* for further information. 27. Lane Keep Assist is designed to read lane markers under certain conditions. It provides a visual and audible alert and slight steering force when lane departure is detected. It is not a collision-avoidance system or a substitute for safe and attentive driving. Effectiveness depends on many factors. See *Owner's Manual* for more information. 28. TORSEN® is a registered trademark of Zexel Torsen, Inc. 29. 2014 EPA-estimated ratings. Actual mileage will vary.

Lexus strives to build vehicles to match customer interest, and thus they typically are built with popular options and option packages. Not all options/packages are available separately, and some may not be available in all regions of the country. See lexus.com for information about options/packages commonly available in your area. If you would prefer a vehicle without any or with different options, contact your dealer to check for current availability or the possibility of placing a special order. Specifications, features, equipment, technical data, performance figures, options, and color and trim are based upon information available at time of printing, are subject to change without notice, and are for mainland U.S.A. vehicles only. Some vehicles shown with available equipment. See your Lexus dealer for details. Lexus reminds you to wear seatbelts, secure children in rear seat, obey all traffic laws and drive responsibly. For more information, call 800-USA-LEXUS (872-5398) or visit lexus.com. To learn more about your financing options, contact your Lexus dealer or call Lexus Financial Services at 800-874-7050.

