

2011 LEXUS

LS

امداد خودرو فرما

شبهه روزی: ۸۵-۸۸۸۶۲۰۸۱

FarmaSOS.com



IT DOESN'T JUST LEAD AN INDUSTRY.



تلفن شبانه روزی: ۰۲۱-۸۸۶۲۰۸۵

Farma308.com

LUXURY

PERFORMANCE

HYBRID

INNOVATION

SPECS

Optional equipment shown.



ایران خودرو فارما

تلفن شماره روزی: ۰۱۶۲۰۸۵

FarmaSOS.com

IT INSPIRES ONE.

With multiple world's first technologies featured in the 2011 LS, you might say that surpassing tradition is becoming a tradition in itself. As our flagship vehicle, the LS is available in four unique versions: the LS 460, the long-wheelbase LS 460 L, the LS 460 Sport and the revolutionary LS 600h L. All are steps forward in our pursuit of perfection, each remarkable in its own way. Because while being an industry leader can be an incredibly gratifying experience, being an LS driver should be even more so.

LS 460
RWD + AWD

LS 460 L
RWD + AWD

LS 460 Sport
RWD

LS 600h L
AWD

Optional equipment shown.

LUXURY

PERFORMANCE

HYBRID

INNOVATION

SPECS



LUXURY
INTERIOR
EXECUTIVE PACKAGE
AUDIO
CRAFTSMANSHIP

LUXURY

PERFORMANCE

HYBRID

INNOVATION

SPECS

امداد فروشگاهی

تلفن شبانه روزی: ۰۲۱-۸۸۶۲۰۸۵

FarmasOS.com

WELCOME TO LUXURY ON AN UNPRECEDENTED SCALE.

The luxuriously appointed LS cabin has always been an industry benchmark. And the interior of the 2011 LS is no different. Featuring world-class design, innovation and style, it seamlessly blends old-world craftsmanship with state-of-the-art amenities—all to make the driver as content and comfortable as possible.

Optional equipment shown.



LUXURY

PERFORMANCE

HYBRID

INNOVATION

SPECS

امداد خودرو فارما

تلفن شبانه روزی: ۰۲۱-۸۸۸۶۲۰۸۵

FarmaSOS.com

Optional equipment shown.

MORE REASONS TO OPT FOR THE SCENIC ROUTE.

Who wouldn't want to enjoy more time inside the LS cabin? Sumptuous available semi-aniline leather trim is hand-chosen from premium full-grain stocks and carefully treated to maintain a soft, supple feel. And an available four-zone climate-control system, heated steering wheel and adjustable rear-seat heaters can offer personalized comfort for all passengers.

WELCOME TO THE BACK SEAT. CARE FOR A TOUR?

Few automobiles are so well-appointed that they warrant guided exploration. But the LS Line is the exception, especially when you consider the Executive-Class Seating Package* available on the LS 460 L and LS 600h L. It helps you take advantage of the extra legroom provided by the long wheelbase, replacing the standard rear bench with two individual seats, for an experience more reminiscent of a private jet than an automobile. The right rear seat has power reclining capability, a built-in ottoman-style leg rest^{1,2} and a multifunction massager. And both rear seats benefit from bendable “butterfly” headrests that cradle your head for more comfortable dozing[†] and infrared sensors that guide the four-zone climate control.

*Please see page 97 for more information regarding options/accessories/packages.

†This feature is intended for use only when the vehicle is parked.



امداد خودرو فارما

تلفن شبانه روزی: ۰۲۱-۸۸۸۶۲۰۸۵

FarmaSOS.com

LUXURY

PERFORMANCE

HYBRID

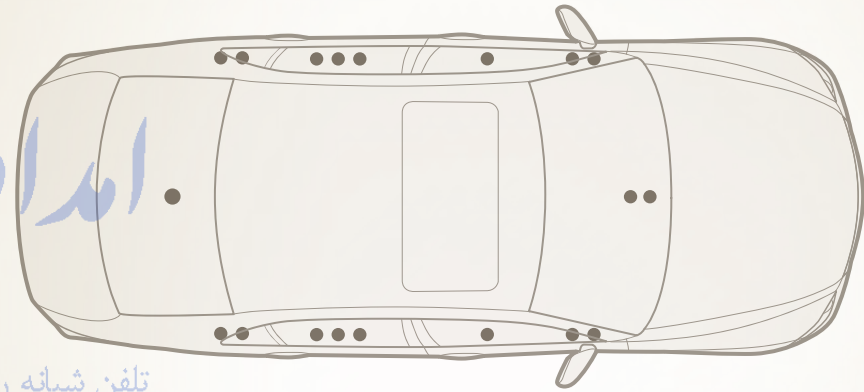
INNOVATION

SPECS

Optional equipment shown.
See disclaimers on page 97.



DISCOVER YOUR NEW FAVORITE VENUE.



تلفن شبانه روزی: ۱۵

FarmaSOS.com

The available Mark Levinson® Reference Surround Sound Audio System³ was designed specifically for the interior of the LS. It offers 7.1-channel architecture surround sound capability and 450 watts at 0.1% THD, 20–20,000 Hz⁴ of power that’s carefully channeled to 19 speakers placed throughout the cabin. It even features XM Radio^{5,6} capability and the ability to control your portable audio player through the system’s interface using a USB input or wirelessly with *Bluetooth*® technology.⁷ The result is an enveloping, exceptionally clear listening experience—one that is worthy of nearly any concert hall.

Optional equipment shown.
See disclaimers on page 97.

LUXURY

PERFORMANCE

HYBRID

INNOVATION

SPECS

SOME DETAILS REQUIRE THE ONE THING
ROBOTS LACK: PASSION.

Even in a car this forward-thinking, to build it to our standards we had to return to a time when passion and craftsmanship prevailed. We did it by recruiting and training 10 experts to become master craftsmen to oversee all aspects of the LS's development—from paint to fabrics to engine. Their passion is apparent throughout. The steering wheel's leather is hand-buffed for hours with a soft bristle. The headlamps were painstakingly developed to accurately mimic the look and effect of Baccarat crystal. And to help match color and grain, all the LS's interior paneling is hand-selected to appear as if it's cut from the same tree. As a final quality check, each LS is individually track tested before it is released—extraordinary for any production vehicle.

Optional equipment shown.

امداد خودرو فارما

تلفن شبانه روزی: ۰۲۱-۸۸۸۶۲۰۸۵

FarmaSOS.com



LUXURY

PERFORMANCE

HYBRID

INNOVATION

SPECS

ANOTHER REASON
YOU'LL FIND IT AHEAD
OF THE PACK.



PERFORMANCE
POWER
LS 460 SPORT
EIGHT-SPEED
ALL-WHEEL DRIVE

You wouldn't expect one of the most luxurious sedans on the road to be so powerfully capable. But surpassing expectations is something the LS does well and often. Buckle into the driver's seat and you'll quickly understand. The engine easily delivers all the power needed to put it, and you, well to the front.

Optional equipment shown.

LUXURY

PERFORMANCE

HYBRID

INNOVATION

SPECS

DISCOVER REFINEMENT IS ANYTHING BUT SHY.



امداد خودرو فارس

تلفن شبانه روزی: ۰۲۱-۸۸۸۶۲۰۸۵

FarmaSOS.com



The LS, being as refined and indulgent as it is, is still more than willing to let loose when given the opportunity. And without question, it is fully equipped to do so. The LS 460 and LS 460 L feature a V8 that delivers 380 horsepower⁸ with a world's first eight-speed automatic transmission. The LS 600h L is a hybrid that takes power to the next level with 438 total system horsepower⁸ and a 0-to-60 of just 5.5 seconds.^{8,9} And Brembo[®] brakes¹⁰ and a sport-tuned suspension are offered exclusively on the LS 460 Sport. Other features such as direct and port fuel injection and a multi-link suspension are offered on all models and are just a few of the many features that provide drivers with an incredibly capable ride.

See disclaimers on page 97.

LUXURY

PERFORMANCE

HYBRID

INNOVATION

SPECS

BORN FOR THE ROAD,
BUILT FOR THE DRIVER.



The LS 460 Sport gives the LS distinct, performance-oriented style. To begin with, it features a sleek front sport grille, 19-inch 10-split-spoke forged alloy wheels,¹¹ rocker panel extensions and a front spoiler that dips aggressively low to the ground. Inside the cabin you'll find race-inspired paddle shifters on the steering wheel,

a perforated Black/Saddle leather-trimmed interior and bolstered front sport seats. In addition, this is the only LS that comes with Brembo[®] performance brakes¹⁰ and downshift rev-matching. Finally, a special sport-tuned air suspension gives driving enthusiasts an experience that's both dynamic and exhilarating.

Optional equipment shown.
See disclaimers on page 97.

LUXURY

PERFORMANCE

HYBRID

INNOVATION

SPECS

8 SPEEDS, 1 SENSATION.

To offer the driver greater acceleration and virtually seamless shifting, the LS is equipped with a world's first eight-speed automatic transmission. The additional gears in the transmission allow closer gear ratios to maximize torque at lower speeds and yet still maintain impressive fuel efficiency at higher speeds. A transmission-control system also allows simultaneous release and engagement of the clutches to lessen gearshift shock and deliver a smooth Lexus-like ride—even at a blistering 0-to-60 of 5.4 seconds.^{8,9}



LUXURY

PERFORMANCE

HYBRID

INNOVATION

SPECS

FOR WHEN THE ROAD PLAYS
HARD TO GET.



Traction can be elusive. Fortunately, both the LS 460 and LS 460 L are available with all-wheel drive (AWD). And then there's the LS 600h L—the world's first AWD V8 hybrid. This AWD system uses a sophisticated TORSEN[®] limited-slip center differential¹² to automatically distribute power between the front and rear axles. And then works in conjunction with Traction Control to transfer power to the wheel with the best grip.

AWD

This helps improve traction and control, and delivers greater driver control during acceleration and cornering.

Optional equipment shown.
See disclaimers on page 97.

By directing engine power to both the front and rear axles, the available all-wheel drive helps provide improved traction and control on a variety of road surfaces—in almost any kind of weather.

LUXURY

PERFORMANCE

HYBRID

INNOVATION

SPECS

OUR FINEST VEHICLE IS ALSO
A CONSIDERATE ONE.



ایراد خودرو فارما

تلفن شبکه روزی: ۰۲۱-۸۸۸۶۲۰۸۵

FarmaSOS.com

HYBRID
HYBRID V8
ECO MODE

LUXURY

PERFORMANCE

HYBRID

INNOVATION

SPECS

In our relentless quest to evolve and improve how our vehicles are powered, we have created what we think is our finest vehicle to date, the LS 600h L. By using a highly advanced gasoline/electric hybrid drivetrain, this groundbreaking vehicle reduces fuel consumption and boasts fewer smog-forming emissions.¹³

See disclaimers on page 97.



PURE POWER USED TO BE
AN OXYMORON.



تلفن شبانه روزی: ۰۲۱-۸۵۰۰۰۰۶۲
FarmaSOS.com

Through innovation, Lexus has helped reshape how the world views the automobile. First and foremost, is how to power them. The LS 600h L, for example, is the world's first full V8 hybrid. By pairing a 5.0-liter V8 gasoline engine with advanced hybrid technology, the vehicle delivers smoother, quieter acceleration; greater responsiveness; and 438 total system horsepower.⁸ Which is about what you'd get from a far less considerate 6.0-liter V12. More performance with a more efficient use of fuel. It's no longer a contradiction—it's the LS 600h L.

See disclaimers on page 97.

LUXURY

PERFORMANCE

HYBRID

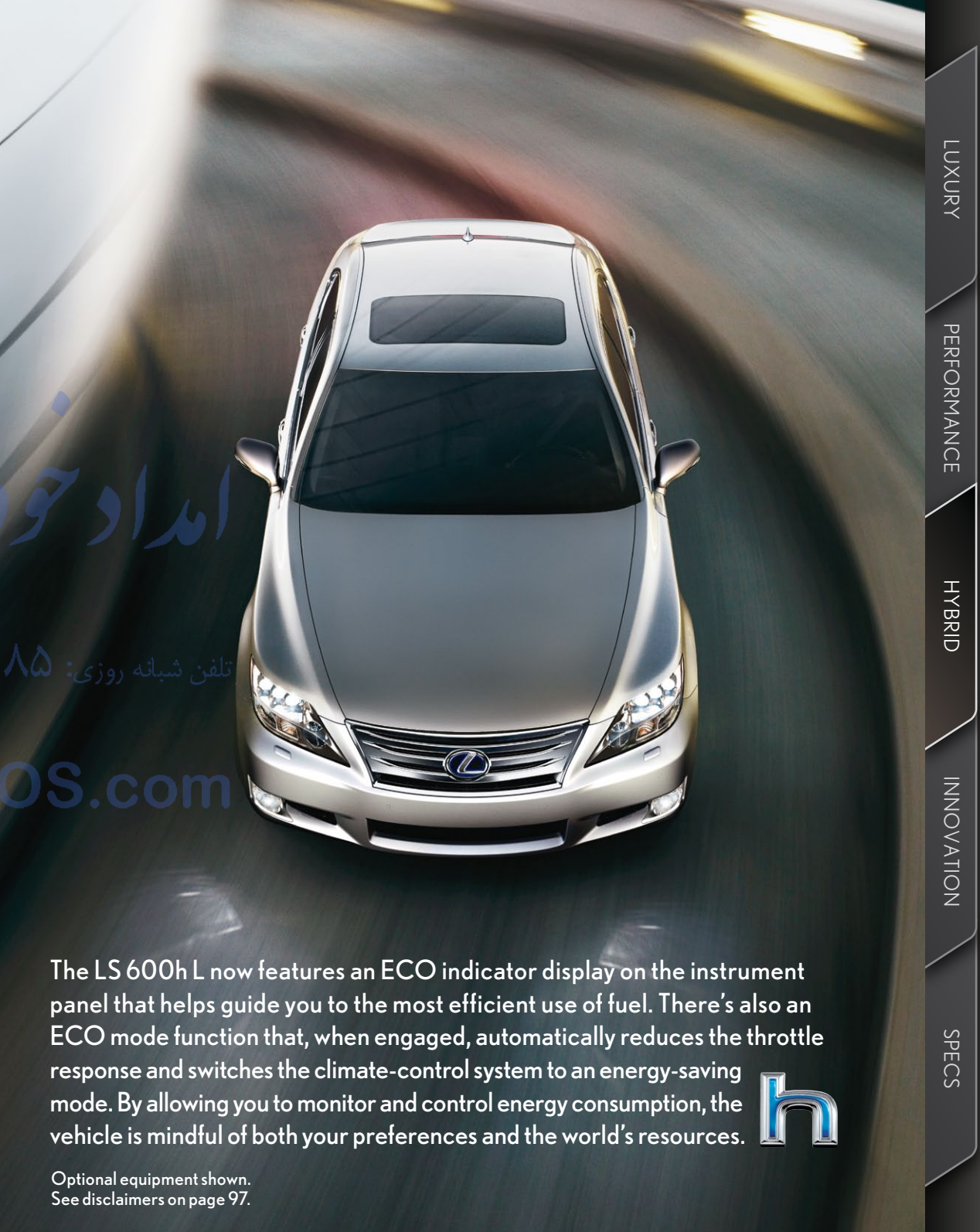
INNOVATION

SPECS


THE FUTURE HAS
IMPECCABLE MANNERS.



The instrument cluster in the L 600h L uses a crisp TFT display to provide the driver with a variety of information, from turn-by-turn directions and hybrid energy consumption to menus where you can personalize settings for your vehicle.



امداد خودرو فارما
تلفن شبانه روزی: ۰۲۱-۸۸۶۲۰۸۵
FarmasOS.com

The LS 600h L now features an ECO indicator display on the instrument panel that helps guide you to the most efficient use of fuel. There's also an ECO mode function that, when engaged, automatically reduces the throttle response and switches the climate-control system to an energy-saving mode. By allowing you to monitor and control energy consumption, the vehicle is mindful of both your preferences and the world's resources. 

Optional equipment shown.
See disclaimers on page 97.

LUXURY
PERFORMANCE
HYBRID
INNOVATION
SPECS



LUXURY

PERFORMANCE

HYBRID

INNOVATION

SPECS

تلفن: شماره روزی: ۰۲۱ ۸۸۸۶۲۰۸۵

FarmaSOS.com

INNOVATION
XM® NAV
LEXUS ENFORM® &
SAFETY CONNECT®
ACTIVE SAFETY
PASSIVE SAFETY

WORLD'S FIRSTS.

Innovation and the pursuit of perfection go hand in hand—without one we could never have the other. It is innovation that allows us to offer what are arguably the finest automobiles on the road today. But don't take our word for it. Let the innovations speak for themselves.



Q WOULD BE IMPRESSED.

Everyone loves a gadget. But when it's in an automobile, does it make for a better driving experience? It's a question we ask every day. When the answer is yes, we strive to make it seamless, intuitive and, of course, just a little bit awe-inspiring. Click on the interactive areas to the right to discover some of our most advanced innovations.

شبهانه روزی: ۰۸۵-۸۸۶۲۰۸۱

FarmaSOS.com

LUXURY

PERFORMANCE

HYBRID

INNOVATION

SPECS

Optional equipment shown. See disclaimers on page 97.

CHANGE OF PLANS? WE PLANNED ON IT.

In addition to the more expected navigation system capabilities, the available voice-activated Navigation System⁵ comes equipped with two very convenient available features: XM NavTraffic^{® 5,6} and XM NavWeather.^{TM 5,6} Traffic speeds, road closures and accident updates are processed when available and relayed to the LS where the Navigation System⁵ uses the information to help you avoid congestion. XM NavWeather^{5,6} provides real-time weather reports for specific cities and even automatically alerts of severe weather. Finally, if your change of plans leads to a longer drive, available XM Radio^{5,6} offers two available features to pass the time: XM Stocks^{5,6} to help track your investments and XM Sports^{5,6} for scores and news on your pre-set teams.*



Optional equipment shown.
See disclaimers on page 97.

*Be sure to obey traffic regulations and maintain awareness of road and traffic conditions.

LUXURY

PERFORMANCE

HYBRID

INNOVATION

SPECS



LEXUS ENFORM®

DESIGNED TO HELP SIMPLIFY YOUR LIFE.

With the available Lexus Enform^{20,21} system, you can speak to a live service agent, 24 hours a day, seven days a week. You don't have to memorize any numbers, navigate through seemingly endless screens—or even have your cell phone with you.

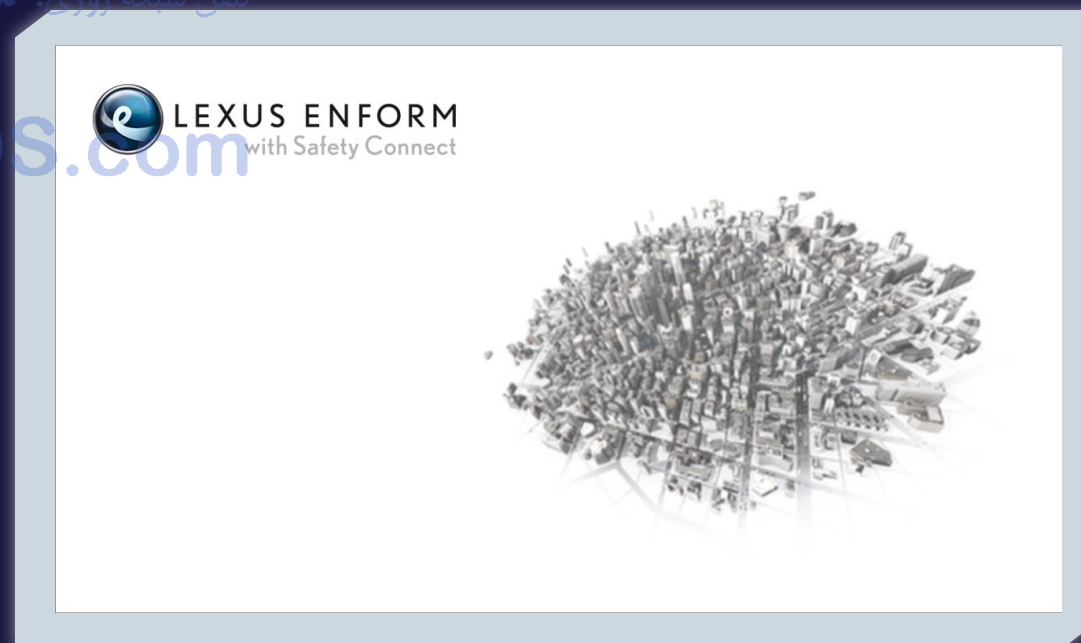
Need an address? Simply call Destination Assist via the LS's available Navigation System⁵ for live assistance. Once you've decided on a location, your agent can send the turn-by-turn directions straight to your vehicle's Navigation System.⁵ Planning a trip? You also have the option of pre-selecting up to 200 destinations online and sending them to your vehicle.

تلفن شبانه روزی: ۰۲۱-۸۸۶۲۰۸۵

SAFETY CONNECT®

DESIGNED TO HELP SAFEGUARD YOUR LIFE.

With Safety Connect^{20,22} you can request emergency help at a moment's notice, whether that means assisting the police with locating your stolen vehicle or requesting Enhanced Roadside Assistance²³ for a flat tire. The Safety Connect^{20,22} service also features Automatic Collision Notification, which automatically sends a call for help the moment the system senses the vehicle has been in a severe rear-end collision or the airbags²⁴ have been deployed.

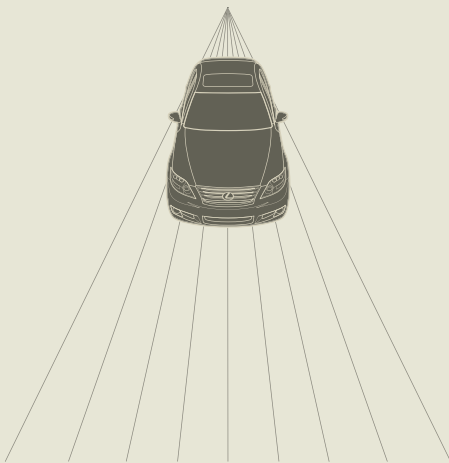


ENGINEERING PEACE OF MIND.

The LS Line offers numerous safety systems to help you avoid a potential accident and help protect you should one occur. A Driver Attention Monitor¹⁷ with the available Advanced Pre-Collision System¹⁷ is designed to detect if you're not facing forward and alert you of an impending frontal collision, improving your chances of avoiding it. It can also alert you to pedestrians who may be precariously close to the front of the vehicle.²⁵ And, should the system determine a frontal collision is unavoidable, it can preemptively retract the front seatbelts and even automatically apply the brakes to help reduce the collision speed. If a collision does occur, the Supplemental Restraint System (SRS)²⁴ in the LS was designed to help protect you and your occupants in a myriad of ways. To learn more, view the airbag demonstration.

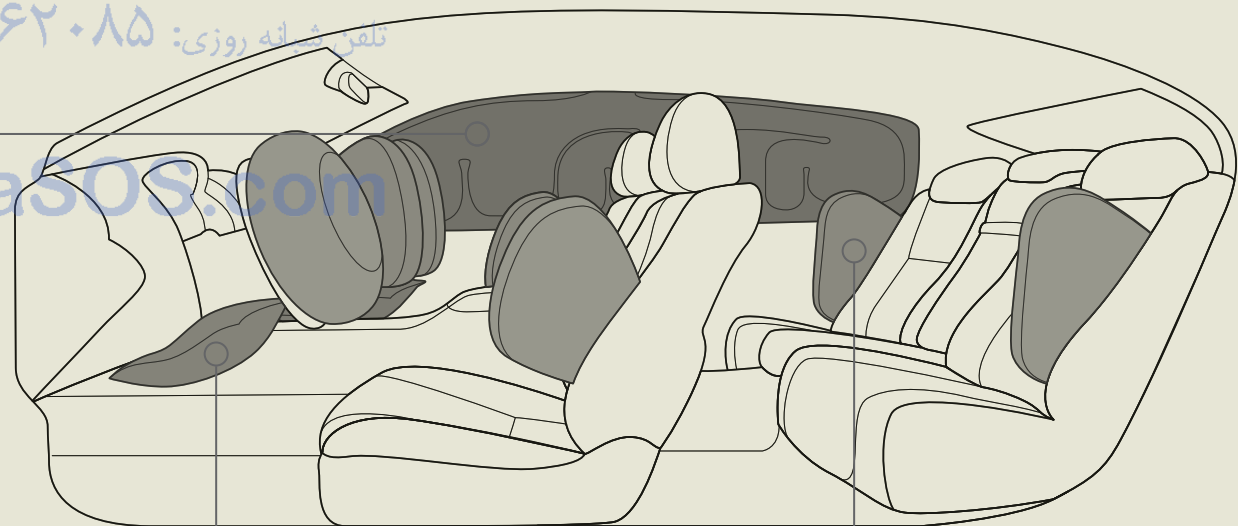


VIEW AIRBAG DEMO >>



AVAILABLE ADVANCED PRE-COLLISION SYSTEM¹⁷ can alert you to an impending frontal collision, improving your chances of avoiding it. It can also alert you to pedestrians who may be precariously close to the front of the vehicle.²⁵

SIDE CURTAIN AIRBAGS
Front and rear side curtain airbags²⁴ are designed to offer additional protection for the occupants' heads during severe side impacts.



KNEE AIRBAGS
Standard knee airbags²⁴ for the driver and the front passenger help provide additional protection in certain types of severe frontal collision.

REAR SIDE AIRBAGS
The available rear side airbags²⁴ help protect rear passengers during certain types of severe side impacts.

WE'RE CREATING INNOVATIONS EVERY DAY.
STAY INFORMED OF THEM
EVERY MONTH.

With so much happening at Lexus, it's hard to stay up-to-date. That's why we created the Lexus Pursuit newsletter. Each month, e-mail subscribers receive exclusive information about upcoming model launches and events, as well as news, innovations and offers. Sign up today and stay informed of all things Lexus.



Optional equipment shown.

LUXURY

PERFORMANCE

HYBRID

INNOVATION

SPECS

امداد خودرو فارسی
تلفن: ۰۲۱-۸۸۶۲۰۸۵
FarmSOS.com

THE 2011
LS 460



LS 460 RWD LS 460 AWD

Optional equipment shown.

The Indulgent LS 460.

4.6-liter 380-hp⁸ V8. Eight-speed sequential-shift automatic. Dual Variable Valve Timing with intelligence and Electronic intake valve timing (VVT-iE). Available all-wheel drive. Leather- and wood-trimmed interior. Dual-zone climate control with interior air filter and smog sensor. Available Navigation System⁵ with voice command. Backup camera.²⁶ Available Advanced Parking Guidance System.¹⁹ Available 19-speaker Mark Levinson[®] Reference Surround Sound Audio System.³ Available power rear sunshade. Available heated steering wheel.

THE 2011
LS 460 L



LS 460 L RWD LS 460 L AWD

Optional equipment shown.

The Long-Wheelbase Luxury of the LS 460 L.

4.6-liter 380-hp⁸ V8. Eight-speed sequential-shift automatic. Dual Variable Valve Timing with intelligence and Electronic intake valve timing (VVT-iE). Available all-wheel drive. Leather- and wood-trimmed interior. Available Navigation System⁵ with voice command. Backup camera.²⁶ Available 19-speaker Mark Levinson Reference Surround Sound Audio System.³ Available four-zone automatic climate control with rear-seat infrared sensor. Available right-rear power recliner with massager and leg rest.¹² Power rear sunshade. Heated steering wheel. Climate-comfort front seats. Available DVD Rear-Seat Entertainment System (RSES).

THE 2011
LS 600h L



Optional equipment shown.

The World's First Full V8 Hybrid Luxury Sedan. The LS 600h L.

5.0-liter V8 and high-output electric-drive motor. Combined 438-hp⁸. Dual Variable Valve Timing with intelligence and Electronic intake valve timing (VVT-iE). All-wheel drive (AWD). Semi-aniline leather- and wood-trimmed interior. Heated steering wheel. Climate-comfort front seats. Navigation System⁵ with voice command. Backup camera.²⁶ Advanced Parking Guidance System (APGS).¹⁹ 19-speaker Mark Levinson Reference Surround Sound Audio System.³ Available four-zone automatic climate control with rear-seat infrared sensor. Available right-rear power recliner with massager and leg rest.¹² Power rear and rear-seat sunshades. Available DVD Rear-Seat Entertainment System (RSES). Electric TFT instrumentation.

THE 2011
LS 460 Sport



Optional equipment shown.

The Exhilarating LS 460 Sport.

4.6-liter 380-hp⁸ V8. Eight-speed sequential-shift transmission with steering-wheel-mounted paddle shifters and downshift rev-matching. Dual Variable Valve Timing with intelligence and Electronic intake valve timing (VVT-iE). High-performance Brembo[®] brakes.¹⁰ 19-inch forged alloy wheels¹¹ with performance tires. Sport-tuned Adaptive Variable Air Suspension (AVS). Aggressive styling that includes front spoiler, rocker panel and rear bumper extensions and a distinctive grille. Two-tone, leather-trimmed interior with Sport front seats. Available Navigation System⁵ with voice command.

See disclaimers on page 97.

LUXURY

PERFORMANCE

HYBRID

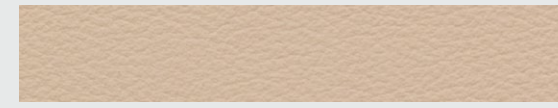
INNOVATION

SPECS

LS 460 COLOR AND TRIM



INTERIOR COLORS AND WOOD TRIM



Parchment Leather



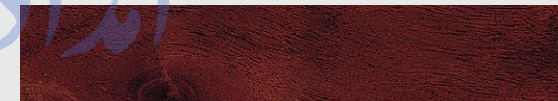
Light Gray Leather



Alabaster Leather



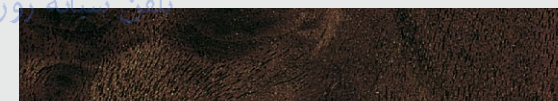
Black Leather



Medium Brown Walnut Wood Trim



Dark Gray Bird's-eye Maple Wood Trim



Matte Dark Brown Ash Burl Wood Trim



Mercury Metallic



Starfire Pearl



Satin Cashmere Metallic



Peridot Mica



Matador Red Mica



Smoky Granite Mica



Deep Sea Mica



Obsidian

FarmaSOS.com

COLOR AVAILABILITY

	Parchment Leather	Light Gray Leather	Alabaster Leather	Black Leather
Mercury Metallic		■		■
Starfire Pearl	■	■	■	■
Satin Cashmere Metallic	■		■	
Peridot Mica	■		■	■
Matador Red Mica	■	■	■	■
Smoky Granite Mica		■	■	■
Deep Sea Mica	■	■	■	■
Obsidian	■	■	■	■
Medium Brown Walnut Wood Trim	■			■
Dark Gray Bird's-eye Maple Wood Trim		■		
Matte Dark Brown Ash Burl Wood Trim			■	

LUXURY

PERFORMANCE

HYBRID

INNOVATION

SPECS

HEADROOM
front/rear
38.0/37.9 in (965/964 mm)

SHOULDER ROOM
front/rear
58.5/56.9 in (1,487/1,446 mm)

HIP ROOM
front/rear
55.4/55.5 in (1,407/1,410 mm)

HEIGHT
58.1 in (1,475 mm)



WIDTH 73.8 in (1,875 mm)

TRUNK CAPACITY
18.0 cu ft (510 L)

FUEL-TANK CAPACITY
22.2 gal (84 L)



WHEELBASE 116.9 in (2,970 mm)

OVERALL LENGTH 199.2 in (5,060 mm)

LS 460 BODY AND DIMENSIONS

See disclaimers on page 97.

LS 460 WHEELS



18-in 10-spoke alloy wheels²⁷
STANDARD



19-in five-spoke alloy wheels^{11*}
AVAILABLE



18-in Teleios alloy wheels^{27*}
AVAILABLE

*Not available
on AWD model.

See disclaimers on page 97.

LUXURY

PERFORMANCE

HYBRID

INNOVATION

SPECS

LS 460 SPECIFICATIONS

ENGINE

TYPE	90° V8, aluminum block and heads, direct and port fuel injection
DISPLACEMENT	4.6 liters (281 cubic inches)
VALVETRAIN	Four cam, four valves per cylinder, with dual Variable Valve Timing with intelligence and Electronic intake valve timing (VVT-iE)
HORSEPOWER AT RPM	380 hp @ 6,400 (RWD) ⁸ ; 357 hp @ 6,400 (AWD) ⁸
TORQUE AT RPM	367 lb-ft @ 4,100 (RWD) ⁸ ; 344 lb-ft @ 4,100 (AWD) ⁸
EMISSION RATING	Certified Ultra-Low Emission Vehicle (ULEV II)

DRIVETRAIN

LS 460	
TRANSMISSION	Eight-speed sequential-shift automatic Electronically Controlled Transmission with intelligence (ECT-i)
DRIVE WHEELS	Rear, with standard Vehicle Dynamics Integrated Management (VDIM) ²⁸
FINAL DRIVE RATIO	2.937:1

LS 460 AWD	
TRANSMISSION	Eight-speed sequential-shift automatic Electronically Controlled Transmission with intelligence (ECT-i)
DRIVE WHEELS	Full-time all-wheel drive (AWD) with TORSEN [®] limited-slip center differential ¹² and standard Vehicle Dynamics Integrated Management (VDIM) ²⁸
FINAL DRIVE RATIO	3.133:1

GENERAL

TYPE	Five-passenger luxury sedan
CONSTRUCTION	Welded-steel unibody
CURB WEIGHT	4,244 lb (1,925 kg) (LS 460) 4,597 lb (2,085 kg) (LS 460 AWD)

PERFORMANCE

LS 460	
0-60 MPH ACCELERATION	5.4 seconds ^{8,9}
1/4 MILE ACCELERATION	14.0 seconds ^{8,9}
TOP TRACK SPEED	130 mph (electronically limited) ^{8,9}
EPA FUEL ECONOMY ESTIMATES	16/24 mpg (city/highway) ²⁹
AERODYNAMIC DRAG COEFFICIENT	0.26
TURNING CIRCLE	36.1 ft

LS 460 AWD	
0-60 MPH ACCELERATION	5.9 seconds ^{8,9}
1/4 MILE ACCELERATION	14.3 seconds ^{8,9}
TOP TRACK SPEED	130 mph (electronically limited) ^{8,9}
EPA FUEL ECONOMY ESTIMATES	16/23 mpg (city/highway) ²⁹
TURNING CIRCLE	37.4 ft

CHASSIS

SUSPENSION	Front: Independent, upper and lower multi-link double-joint suspension arms with stabilizer bar. Rear: Independent multi-link with stabilizer bar
STEERING	Electronic Power Steering system (EPS) 3.2 turns lock-to-lock
BRAKES	Four-wheel power-assisted disc brakes with Electronic Controlled Braking (ECB), four-sensor, four-channel Anti-lock Braking System (ABS), Electronic Brakeforce Distribution (EBD) and Brake Assist ³⁰
WHEELS AND TIRES	13.1-in ventilated front, 12.3-in ventilated rear discs (LS 460) 14.0-in ventilated front, 13.1-in ventilated rear discs (LS 460 AWD) 18 x 7.5-in 10-spoke alloy wheels with 235/50VR18 all-season tires. ²⁷ Full-size spare tire on alloy wheel ²⁷ 19 x 8.0-in five-spoke alloy wheels with 245/45VR19 all-season tires ¹¹ (Appearance Package) ^{*†}

*Not available on AWD model.

†Please see page 97 for more information regarding options/accessories/packages.

See disclaimers on page 97.

LS 460 STANDARD LUXURY FEATURES

LUXURY AND CONVENIENCE

- SmartAccess^{31,32} with push-button Start/Stop
- Remote-linked window/moonroof opening and closing
- Dual-zone automatic climate control with interior air filter, smog sensor and automatic recirculation mode
- Lexus Memory System to control power front seats (except lumbar), outside mirrors and steering wheel
- Power tilt-and-telescopic steering column
- Power windows and tilt-and-slide moonroof with one-touch open/close
- Electrochromic (auto-dimming) inside rearview mirror and outside mirrors
- Auto on/off projector-beam headlamps with auto-off delay
- Cruise control
- HomeLink[®] universal transceiver to operate compatible garage, gate, home lighting and home security systems
- Lexus Personalized Settings (LPS)³³ to customize select electronic functions
- Front- and rear-lighted vanity mirrors
- Power-adjustable, auto-folding outside mirrors with turn indicators, defoggers, puddle lamps and auto tilt-down in reverse
- Scratch-resistant clearcoat paint

COMMUNICATION, AUDIO AND NAVIGATION

- Multi-information center-console display with integrated backup camera²⁶ and Enhanced Bluetooth[®] technology⁷
- Lexus 10-speaker Premium Sound System with Digital Sound Processor, Automatic Sound Levelizer (ASL), in-dash, single-feed, six-disc CD auto-changer
- XM^{5,6} Radio. Subscription required. 90-day trial subscription included
- USB input and Bluetooth[®] wireless audio³⁴ profile for integration of compatible music players with audio system

SEATING AND TRIM

- Medium brown walnut, dark gray bird's-eye maple or matte dark brown ash burl trim
- Leather-trimmed interior
- Wood- and leather-trimmed steering wheel and shift knob
- Heated steering wheel (LS 460 AWD)
- 16-way driver's (including dual-function lumbar) with auto slide-away and 12-way front passenger's (including lumbar) power seats
- Height-adjustable headrests for all seats

INSTRUMENTATION AND CONTROLS

- Steering-wheel-mounted audio, brake hold and display controls
- Electronic TFT (Thin Film Transistor) multi-information display
- Electroluminescent instrumentation
- Illuminated interior electronic trunk-lid and fuel-filler door releases
- ECO indicator

FarmaSOS.com

تلفن شبانه روزی: ۰۸۵-۸۸۶۲-۱۱۱

امداد خودرو فارسیا

STANDARD SAFETY AND SECURITY FEATURES

ACTIVE SAFETY

Vehicle Dynamics Integrated Management (VDIM)²⁸ with Vehicle Stability Control (VSC)²⁸ and Traction Control (TRAC)

Four-wheel ventilated power-assisted disc brakes with Electronic Controlled Braking (ECB), four-sensor, four-channel Anti-lock Braking System (ABS), Brake Assist³⁰ and Electronic Brakeforce Distribution (EBD)

Smart Stop Technology³⁵

Direct Tire Pressure Monitor System³⁶

Water-repellent front-door glass

Rain-sensing intermittent windshield wipers with mist cycle

Rear-window defogger with auto-off timer

High-Intensity Discharge (HID) headlamps with dynamic auto leveling

Dual-swivel Adaptive Front Lighting System (AFS)¹⁸

Daytime running lights and integrated foglamps

LED taillamps

PASSIVE SAFETY

Driver's and front passenger's advanced airbag system (SRS)²⁴ with front passenger's twin-chamber airbag (SRS)²⁴

Front seat-mounted side airbags (SRS)²⁴

Driver's and front passenger's knee airbags (SRS)²⁴

Front and rear side curtain airbags (SRS)²⁴

Advanced active front headrests³⁷

Three-point seatbelts for all seating positions, pre-tensioners with force limiters for front and outboard rear seats

Automatic Locking Retractor/Emergency Locking Retractor (ALR/ELR) seatbelts for rear outboard seating positions. Emergency Locking Retractor (ELR) only for driver's seat

Height-adjustable front shoulder belt anchors

Child Restraint Seat (CRS) tether anchor brackets for rear outboard seating positions

Highly rigid body structure with front and rear crumple zones

Side-impact door beams

Reinforcements in pillars and door sills

Impact-dissipating upper interior trim

Collapsible steering column

SECURITY

Safety Connect^{®20,22} features Automatic Collision Notification, Stolen Vehicle Location, Emergency Assistance Button (SOS) and Enhanced Roadside Assistance²³ services. Subscription required. One-year trial subscription included

Vehicle theft-deterrent and engine-immobilizer system³²

Emergency interior trunk release

First aid kit

Tool kit

امداد خودرو فارما

تلفن شبانه روزی: ۰۲۱-۸۸۸۶۲۰۸۵

FarmaSOS.com

LS 460 PACKAGES*

COMFORT PACKAGE

Wood- and leather-trimmed heated steering wheel (Standard on AWD)

Climate-comfort front seats with heat/cool knob, heated rear seats

Intuitive Parking Assist

Power rear sunshade

Headlamp washers

Power door closers and one-touch power trunk open/close

COMFORT PLUS PACKAGE

Includes all Comfort Package features plus:

Semi-aniline leather-trimmed interior

Climate-comfort power rear seats with power-adjustable butterfly headrests, memory and power lumbar massage and adjustment for outboard seats

Rear-seat side airbags (SRS)²⁴

NAVIGATION SYSTEM/MARK LEVINSON® REFERENCE SURROUND SOUND AUDIO SYSTEM PACKAGE

HDD Navigation System⁵ including voice command, color LCD display and Enhanced Bluetooth® technology⁷

Lexus Enform^{®20,21} offers Destination Assist, eDestination and Lexus Insider. Subscription required. One-year trial subscription included

XM NavTraffic^{®5,6}, XM NavWeather^{™5,6} and XM Sports and Stocks.^{5,6} Subscription required. 90-day trial subscription included

Mark Levinson 19-speaker Reference Surround Sound Audio System³ with in-dash, single-feed, six-disc DVD/CD auto-changer

NAVIGATION SYSTEM/MARK LEVINSON REFERENCE SURROUND SOUND AUDIO SYSTEM/ADVANCED PARKING GUIDANCE SYSTEM PACKAGE

Includes all Navigation System/Mark Levinson Reference Surround Sound Audio System Package features plus:

Advanced Parking Guidance System¹⁹

COLD WEATHER PACKAGE

Windshield-wiper deicer

Enhanced interior heater

Higher-capacity battery

APPEARANCE PACKAGE

19-in five-spoke alloy wheels (RWD)¹¹ or 18-in 10-spoke alloy wheels (AWD)²⁷

Sport exterior trim and grille



LS 460 shown with Appearance Package.*

LS 460 OPTIONS

19-in five-spoke alloy wheels¹¹

HDD Navigation System⁵ including voice command; color LCD display; XM NavTraffic,^{5,7} XM NavWeather^{5,7} and XM Sports and Stocks.^{5,7} Subscription required. 90-day trial subscription included; and Lexus Enform.^{20,21} Subscription required. One-year trial subscription included

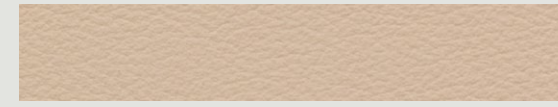
Pre-Collision System (PCS)³⁸ and Dynamic Radar Cruise Control¹⁵

*Please see page 97 for more information regarding options/accessories/packages.
See disclaimers on page 97.

LS 460 L COLOR AND TRIM



INTERIOR COLORS AND WOOD TRIM



Parchment Leather



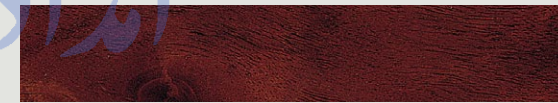
Light Gray Leather



Alabaster Leather



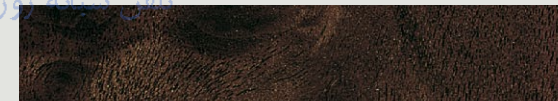
Black Leather



Medium Brown Walnut Wood Trim



Dark Gray Bird's-eye Maple Wood Trim



Matte Dark Brown Ash Burl Wood Trim



Mercury Metallic



Starfire Pearl



Satin Cashmere Metallic



Peridot Mica



Matador Red Mica



Smoky Granite Mica



Deep Sea Mica



Obsidian

COLOR AVAILABILITY

	Parchment Leather	Light Gray Leather	Alabaster Leather	Black Leather
Mercury Metallic		■		■
Starfire Pearl	■	■	■	■
Satin Cashmere Metallic	■		■	
Peridot Mica	■		■	■
Matador Red Mica	■	■	■	■
Smoky Granite Mica		■	■	■
Deep Sea Mica	■	■	■	■
Obsidian	■	■	■	■
Medium Brown Walnut Wood Trim	■			■
Dark Gray Bird's-eye Maple Wood Trim		■		
Matte Dark Brown Ash Burl Wood Trim			■	

LUXURY

PERFORMANCE

HYBRID

INNOVATION

SPECS

HEADROOM
front/rear
38.0/37.9 in (965/964 mm)

SHOULDER ROOM
front/rear
58.5/56.4 in (1,487/1,432 mm)

HIP ROOM
front/rear
55.4/55.5 in (1,407/1,410 mm)

HEIGHT
58.1 in (1,475 mm)



WIDTH 73.8 in (1,875 mm)

TRUNK CAPACITY
18.0 cu ft (510 L)
15.5 cu ft (439 L) (with Rear-Seat Upgrade Package or
Executive-Class Seating Package)*³⁹

FUEL-TANK CAPACITY
22.2 gal (84 L)



WHEELBASE 121.7 in (3,090 mm)

OVERALL LENGTH 203.9 in (5,180 mm)

LS 460 L BODY AND DIMENSIONS

*Please see page 97 for more information regarding options/accessories/packages. See disclaimers on page 97.

LS 460 L WHEELS



تلفن شبانه روزه: ۰۲۱-۸۸۸۶۲۰۸۵

FarmaSOS.com



18-in 10-spoke alloy wheels²⁷
STANDARD



19-in five-spoke alloy wheels^{11*}
AVAILABLE



18-in Teleios alloy wheels^{27*}
AVAILABLE

*Not available on AWD model.

See disclaimers on page 97.

LUXURY

PERFORMANCE

HYBRID

INNOVATION

SPECS

LS 460 L SPECIFICATIONS

ENGINE

TYPE	90° V8, aluminum block and heads, direct and port fuel injection
DISPLACEMENT	4.6 liters (281 cubic inches)
VALVETRAIN	Four cam, four valves per cylinder, with dual Variable Valve Timing with intelligence and Electronic intake valve timing (VVT-iE)
HORSEPOWER AT RPM	380 hp @ 6,400 (RWD) ⁸ ; 357 hp @ 6,400 (AWD) ⁸
TORQUE AT RPM	367 lb-ft @ 4,100 (RWD) ⁸ ; 344 lb-ft @ 4,100 (AWD) ⁸
EMISSION RATING	Certified Ultra-Low Emission Vehicle (ULEV II)

DRIVETRAIN

LS 460 L	
DRIVE WHEELS	Rear, with standard Vehicle Dynamics Integrated Management (VDIM) ²⁸
TRANSMISSION	Eight-speed sequential-shift automatic Electronically Controlled Transmission with intelligence (ECT-i)
FINAL DRIVE RATIO	2.937:1

LS 460 L AWD	
DRIVE WHEELS	Full-time all-wheel drive (AWD) with TORSEN [®] limited-slip center differential ¹² and standard Vehicle Dynamics Integrated Management (VDIM) ²⁸
TRANSMISSION	Eight-speed sequential-shift automatic Electronically Controlled Transmission with intelligence (ECT-i)
FINAL DRIVE RATIO	3.133:1

GENERAL

TYPE	Five-passenger luxury sedan, available four-passenger premium configuration ²
CONSTRUCTION	Welded-steel unibody
CURB WEIGHT	4,333 lb (1,965 kg) (LS 460 L) 4,697 lb (2,130 kg) (LS 460 L AWD)

PERFORMANCE

LS 460 L	
0-60 MPH ACCELERATION	5.4 seconds ^{8,9}
1/4 MILE ACCELERATION	14.0 seconds ^{8,9}
TOP TRACK SPEED	130 mph (electronically limited) ^{8,9}
EPA FUEL ECONOMY ESTIMATES	16/24 mpg (city/highway) ²⁹
AERODYNAMIC DRAG COEFFICIENT	0.26
TURNING CIRCLE	37.4 ft
LS 460 L AWD	
0-60 MPH ACCELERATION	5.9 seconds ^{8,9}
1/4 MILE ACCELERATION	14.3 seconds ^{8,9}
TOP TRACK SPEED	130 mph (electronically limited) ^{8,9}
EPA FUEL ECONOMY ESTIMATES	16/23 mpg (city/highway) ²⁹
TURNING CIRCLE	38.7 ft
CHASSIS	
SUSPENSION	Front: Independent, upper and lower multi-link double-joint suspension arms with stabilizer bar. Rear: Independent multi-link with stabilizer bar Coil-over monotube shock absorbers Available height-adjustable Adaptive Variable Air Suspension (AVS) with air springs and electronically modulated damping
STEERING	Electronic Power Steering system (EPS) 3.2 turns lock-to-lock Available Variable Gear-Ratio Steering (VGRS)
BRAKES	Four-wheel power-assisted disc brakes with Electronic Controlled Braking (ECB), four-sensor, four-channel Anti-lock Braking System (ABS), Electronic Brakeforce Distribution (EBD) and Brake Assist ³⁰ 13.1-in ventilated front, 12.3-in ventilated rear discs 14.0-in ventilated front, 13.1-in ventilated rear discs (LS 460 L AWD)
WHEELS AND TIRES	18 x 7.5-in 10-spoke alloy wheels with 235/50VR18 all-season tires. ²⁷ Full-size spare tire on alloy wheel ²⁷ 19 x 8.0-in five-spoke alloy wheels with 245/45VR19 all-season tires ¹¹ (Appearance Package)*†

*Not available on AWD model.

†Please see page 97 for more information regarding options/accessories/packages.

See disclaimers on page 97.

LS 460 L STANDARD LUXURY FEATURES

LUXURY AND CONVENIENCE

- SmartAccess^{31,32} with push-button Start/Stop
- Remote-linked window/moonroof opening and closing
- Dual-zone automatic climate control with interior air filter, smog sensor and automatic recirculation mode
- Lexus Memory System to control power front seats (except lumbar), outside mirrors and steering wheel
- Power tilt-and-telescopic steering column
- Power windows and tilt-and-slide moonroof with one-touch open/close
- Electrochromic (auto-dimming) inside rearview mirror and outside mirrors
- Auto on/off projector-beam headlamps with auto-off delay
- Cruise control
- Power door closers and power trunk open/close
- HomeLink[®] universal transceiver to operate compatible garage, gate, home lighting and home security systems
- Lexus Personalized Settings (LPS)³³ to customize select electronic functions
- Laminated side glass
- Power rear sunshade
- Intuitive Parking Assist
- Front- and rear-lighted vanity mirrors
- Power-adjustable, auto-folding outside mirrors with turn indicators, defoggers, puddle lamps and auto tilt-down in reverse
- Scratch-resistant clearcoat paint
- Semi-aniline leather

COMMUNICATION, AUDIO AND NAVIGATION

- Multi-information center-console display with integrated backup camera²⁶ and Enhanced Bluetooth[®] technology⁷
- Lexus 10-speaker Premium Sound System with Digital Sound Processor, Automatic Sound Levelizer (ASL), in-dash, single-feed, six-disc CD auto-changer
- XM^{5,6} Radio. Subscription required. 90-day trial subscription included
- USB input and Bluetooth wireless audio³⁴ profile for integration of compatible music players with audio system

SEATING AND TRIM

- Medium brown walnut, dark gray bird's-eye maple or matte dark brown ash burl trim
- Leather-trimmed interior
- Wood- and leather-trimmed heated steering wheel
- Wood- and leather-trimmed shift knob
- 16-way driver's (including dual-function lumbar) with auto slide-away and 12-way front passenger's (including lumbar) power seats
- Climate-comfort front seats with heat/cool knob
- ◆ Height-adjustable headrests for all seats

INSTRUMENTATION AND CONTROLS

- Steering-wheel-mounted audio, brake hold and display controls
- Electronic TFT (Thin Film Transistor) multi-information display
- Electroluminescent instrumentation
- Illuminated interior electronic trunk-lid and fuel-filler door releases
- ECO indicator

ایراد خودرو فارما

تلفن شبانه روزی: ۰۲۱-۸۸۶۲۰۸۵

FarmaSOS.com

STANDARD SAFETY AND SECURITY FEATURES

ACTIVE SAFETY

Vehicle Dynamics Integrated Management (VDIM)²⁸ with Vehicle Stability Control (VSC)²⁸ and Traction Control (TRAC)

Four-wheel ventilated power-assisted disc brakes with Electronic Controlled Braking (ECB), four-sensor, four-channel Anti-lock Braking System (ABS), Brake Assist³⁰ and Electronic Brakeforce Distribution (EBD)

Smart Stop Technology³⁵

Direct Tire Pressure Monitor System³⁶

Water-repellent front-door glass

Rain-sensing intermittent windshield wipers with mist cycle

Rear-window defogger with auto-off timer

High-Intensity Discharge (HID) headlamps with dynamic auto leveling

Intelligent high-beam headlamps⁴⁰

Dual-swivel Adaptive Front Lighting System (AFS)¹⁸ with headlamp washers

Daytime running lights and integrated foglamps

LED taillamps

PASSIVE SAFETY

Driver's and front passenger's advanced airbag system (SRS)²⁴ with front passenger's twin-chamber airbag (SRS)²⁴

Front seat-mounted side airbags (SRS)²⁴

Driver's and front passenger's knee airbags (SRS)²⁴

Front and rear side curtain airbags (SRS)²⁴

Advanced active front headrests³⁷

Three-point seatbelts for all seating positions, pre-tensioners with force limiters for front and outboard rear seats

Automatic Locking Retractor/Emergency Locking Retractor (ALR/ELR) seatbelts for rear outboard seating positions. Emergency Locking Retractor (ELR) only for driver's seat

Height-adjustable front shoulder belt anchors

Child Restraint Seat (CRS) tether anchor brackets for rear outboard seating positions

Highly rigid body structure with side-impact door beams, front and rear crumple zones

Reinforcements in pillars and door sills

Impact-dissipating upper interior trim

Collapsible steering column

SECURITY

Safety Connect^{®20,22} features Automatic Collision Notification, Stolen Vehicle Location, Emergency Assistance Button (SOS) and Enhanced Roadside Assistance²³ services. Subscription required. One-year trial subscription included

Vehicle theft-deterrent and engine-immobilizer system³²

Emergency interior trunk release

First aid kit

Tool kit

امداد خودرو فارما

تلفن شبانه روزی: ۰۲۱-۸۸۸۶۲۰۸۵

FarmaSOS.com

LS 460 L PACKAGES*

REAR-SEAT UPGRADE PACKAGE

Semi-aniline leather-trimmed interior with Alcantara® headliner

Power rear-door sunshades

Four-zone automatic climate control with interior air filter, smog sensor, automatic recirculation mode, rear-seat Air Purifier and cool box

Climate-comfort power rear seats with power-adjustable butterfly rear headrests, memory and power lumbar massage and adjustment for outboard seats

Rear-seat audio controls

Rear-seat side airbags (SRS)²⁴

LUXURY PACKAGE

Semi-aniline leather-trimmed interior with Alcantara headliner

Power rear-door sunshades

EXECUTIVE-CLASS SEATING PACKAGE (special order only)

Four-person seating with rear fixed console

Semi-aniline leather-trimmed interior with Alcantara headliner

Four-zone automatic climate control with rear-seat infrared temperature sensor, interior air filter, automatic recirculation mode and rear-seat Air Purifier

Right-rear power recliner with multifunction massager, adjustment and leg rest^{1,2}

Climate-comfort front and rear seats, power rear seats with power-adjustable butterfly headrests, memory and left-rear power lumbar massage and adjustment

Rear-seat wood-trimmed table and cool box

DVD Rear-Seat Entertainment System (RSES) with power nine-inch screen, audio controls and wireless headphones⁴¹

Power rear-door sunshades

Rear-seat side airbags (SRS)²⁴

COLD WEATHER PACKAGE

Windshield-wiper deicer

Enhanced interior heater

Higher-capacity battery

APPEARANCE PACKAGE

19-in five-spoke alloy wheels (RWD)¹¹ or 18-in 10-spoke alloy wheels (AWD)²⁷

Sport exterior trim and grille



LS 460 L shown with Appearance Package.

LS 460 L OPTIONS

19-in five-spoke alloy wheels¹¹

Adaptive Variable Air Suspension (AVS) and Variable Gear-Ratio Steering (VGRS) (RWD)

Mark Levinson® 19-speaker, 450 watts @ less than 0.1% THD, 20-20,000 Hz⁴ Reference Surround Sound Audio System³ with in-dash, single-feed, six-disc DVD/CD auto-changer

Advanced Pre-Collision System¹⁷ with Active Pedestrian Detection System,²⁵ Lane Keep Assist¹⁶ and Driver Attention Monitor¹⁷

HDD Navigation System⁵ including voice command; color LCD display; XM NavTraffic^{5,6}, XM NavWeather^{TM5,6} and XM Sports and Stocks.^{5,6} Subscription required. 90-day trial subscription included; and Lexus Enform.^{20,21} Subscription required. One-year trial subscription included

Advanced Parking Guidance System¹⁹

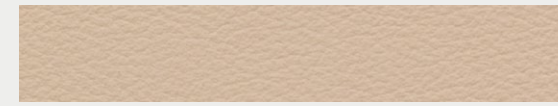
Pre-Collision System (PCS)³⁸ and Dynamic Radar Cruise Control¹⁵

*Please see page 97 for more information regarding options/accessories/packages.
See disclaimers on page 97.

LS 600hL COLOR AND TRIM



INTERIOR COLORS AND WOOD TRIM



Parchment Leather



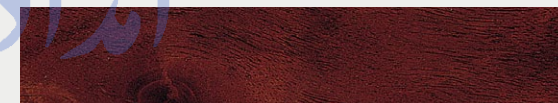
Light Gray Leather



Alabaster Leather



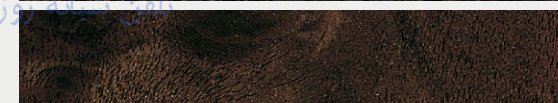
Black Leather



Medium Brown Walnut Wood Trim



Dark Gray Bird's-eye Maple Wood Trim



Matte Dark Brown Ash Burl Wood Trim



Black Opal Mica



Peridot Mica



Satin Cashmere Metallic



Starfire Pearl



Mercury Metallic



Smoky Granite Mica



Obsidian



Blue Harbor Metallic

COLOR AVAILABILITY

	Parchment Leather	Light Gray Leather	Alabaster Leather	Black Leather
Black Opal Mica	■		■	■
Peridot Mica	■		■	■
Satin Cashmere Metallic	■		■	
Starfire Pearl	■	■	■	■
Mercury Metallic		■		■
Smoky Granite Mica		■	■	■
Obsidian	■	■	■	■
Blue Harbor Metallic	■	■	■	■
Medium Brown Walnut Wood Trim	■			■
Dark Gray Bird's-eye Maple Wood Trim		■		
Matte Dark Brown Ash Burl Wood Trim			■	

LUXURY

PERFORMANCE

HYBRID

INNOVATION

SPECS

تلفن: ۰۲۱-۸۸۶۲۰۸۵

FarmaSOS.com

HEADROOM
front/rear
38.0/37.9 in (965/964 mm)

SHOULDER ROOM
front/rear
58.5/56.3 in (1,487/1,432 mm)

HIP ROOM
front/rear
55.4/55.5 in (1,407/1,410 mm)

HEIGHT
58.3 in (1,480 mm)



WIDTH 73.8 in (1,875 mm)

FUEL-TANK CAPACITY
22.2 gal (84 L)



WHEELBASE 121.7 in (3,090 mm)

OVERALL LENGTH 203.9 in (5,180 mm)

LS 600h L BODY AND DIMENSIONS

See disclaimers on page 97.

LS 600h L WHEELS



تلفن شبانه روزی: ۰۲۱-۸۸۶۲۰۸۵

FarmaSOS.com



19-in seven-spoke alloy wheels¹¹
STANDARD



18-in 10-spoke alloy wheels²⁷
AVAILABLE

See disclaimers on page 97.

LUXURY

PERFORMANCE

HYBRID

INNOVATION

SPECS

LS 600h L SPECIFICATIONS

ENGINE

TYPE	90° V8, aluminum block and heads, direct and port fuel injection
DISPLACEMENT	5.0 liters (303 cubic inches)
VALVETRAIN	Four cam, four valves per cylinder, with dual Variable Valve Timing with intelligence and Electronic intake valve timing (VVT-iE)
ELECTRIC-DRIVE MOTOR	High-output, permanent-magnet, electric-drive motor with EV mode ⁴²
TOTAL SYSTEM HORSEPOWER	438 hp ⁸
EMISSION RATING	Certified Super Ultra-Low Emission Vehicle (SULEV II)

DRIVETRAIN

DRIVE WHEELS	Full-time all-wheel drive (AWD) with TORSEN [®] limited-slip center differential ¹² and standard Vehicle Dynamics Integrated Management (VDIM) ²⁸
TRANSMISSION	Electronically controlled Continuously Variable Transmission (ECVT) with Snow mode
FINAL DRIVE RATIO	3.916:1

GENERAL

TYPE	Five-passenger luxury sedan, available four-passenger premium configuration ²
CONSTRUCTION	Welded-steel unibody
CURB WEIGHT	5,203 lb (2,360 kg)

PERFORMANCE

0-60 MPH ACCELERATION	5.5 seconds ^{8,9}
1/4 MILE ACCELERATION	13.8 seconds ^{8,9}
TOP TRACK SPEED	130 mph (electronically limited) ^{8,9}
EPA FUEL ECONOMY ESTIMATES	19/23 mpg (city/highway) ²⁹
AERODYNAMIC DRAG COEFFICIENT	0.27
TURNING CIRCLE	39.4 ft

CHASSIS

SUSPENSION	Front: Independent, upper and lower multi-link double-joint suspension arms with stabilizer bar Rear: Independent multi-link with stabilizer bar Height-adjustable Adaptive Variable Air Suspension (AVS) with air springs and electronically modulated damping
STEERING	Variable Gear-Ratio Steering (VGRS), 2.3-3.7 turns lock-to-lock
BRAKES	Four-wheel power-assisted disc brakes with Electronic Controlled Braking (ECB), four-sensor, four-channel Anti-lock Braking System (ABS), Electronic Brakeforce Distribution (EBD) and Brake Assist ³⁰ 14.1-in ventilated front, 13.2-in ventilated rear discs Regenerative braking function
WHEELS AND TIRES	19 x 8.0-in seven-spoke alloy wheels with 245/45VR19 all-season tires. ¹¹ Full-size spare tire on alloy wheel ¹¹ 18 x 10-in 10-spoke alloy wheels with 235/50VR18 all-season tires. ²⁷ (Executive Class Seating Package)*

*Please see page 97 for more information regarding options/accessories/packages. See disclaimers on page 97.

LS 600h L STANDARD LUXURY FEATURES

LUXURY AND CONVENIENCE

- SmartAccess^{31,32} with push-button Start/Stop
- Remote-linked window/moonroof opening and closing
- Dual-zone automatic climate control with interior air filter, smog sensor and automatic recirculation mode
- Lexus Memory System to control power front seats (except lumbar), outside mirrors and steering wheel
- Power tilt-and-telescopic steering column
- Power windows and tilt-and-slide moonroof with one-touch open/close
- Electrochromic (auto-dimming) inside rearview mirror and outside mirrors
- Auto on/off projector-beam headlamps with auto-off delay
- Cruise control
- Power door closers and power trunk open/close
- HomeLink[®] universal transceiver to operate compatible garage, gate, home lighting and home security systems
- Lexus Personalized Settings (LPS)³³ to customize select electronic functions
- Laminated side glass
- Power rear sunshade; power rear-door sunshades
- Advanced Parking Guidance System¹⁹
- Intuitive Parking Assist
- Front- and rear-lighted vanity mirrors
- Power-adjustable, auto-folding outside mirrors with turn indicators, defoggers, puddle lamps and auto tilt-down in reverse
- Scratch-resistant clearcoat paint

INSTRUMENTATION AND CONTROLS

- Steering-wheel-mounted audio, brake hold and display controls
- Electronic TFT (Thin Film Transistor) multi-information display
- Electronic TFT instrumentation
- Illuminated interior electronic trunk-lid and fuel-filler door releases
- ECO mode and indicator

COMMUNICATION, AUDIO AND NAVIGATION

- HDD Navigation System⁵ including voice command, color LCD display with integrated backup camera²⁶ and Enhanced Bluetooth[®] technology⁷
- Lexus Enform^{®20,21} with Safety Connect^{®20,22} features Destination Assistance, eDestination, Lexus Insider, Automatic Collision Notification, Stolen Vehicle Location, Emergency Assistance Button (SOS) and Enhanced Roadside Assistance²³ services. Subscription required. One-year trial subscription included
- Mark Levinson[®] 19-speaker Reference Surround Sound Audio System³ with in-dash, single-feed, six-disc DVD/CD auto-changer
- XM^{5,6} Radio, XM NavTraffic^{®5,6}, XM NavWeather^{™5,6} and XM Sports and Stocks^{5,6}. Subscription required. 90-day trial subscription included
- USB input and Bluetooth[®] wireless audio³⁴ profile for integration of compatible music players with audio system and A/V inputs and rear headphone jacks

SEATING AND TRIM

- Medium brown walnut, dark gray bird's-eye maple or matte dark brown ash burl trim
- Semi-aniline leather-trimmed interior with Alcantara[®] headliner and leather-trimmed instrument panel
- Wood- and leather-trimmed steering wheel
- Heated steering wheel
- Wood-trimmed shift knob with chrome
- Wood-trimmed interior assist grips
- 16-way driver's (including dual-function lumbar) with auto slide-away and 12-way front passenger's (including lumbar) power seats
- Climate-comfort front seats with heat/cool knob
- Heated rear seats and enhanced interior heater
- Height-adjustable headrests for all seats

ایراد خودرو فارما
تلفن شماره روزانه: ۰۲۱-۸۸۶۲۰۸۵
FarmaSOS.com

STANDARD SAFETY AND SECURITY FEATURES

ACTIVE SAFETY

Vehicle Dynamics Integrated Management (VDIM)²⁸ with Vehicle Stability Control (VSC)²⁸ and Traction Control (TRAC)

Four-wheel ventilated power-assisted disc brakes with Electronic Controlled Braking (ECB), four-sensor, four-channel Anti-lock Braking System (ABS), Brake Assist³⁰ and Electronic Brakeforce Distribution (EBD)

Smart Stop Technology³⁵

Direct Tire Pressure Monitor System³⁶

Water-repellent front-door glass

Rain-sensing intermittent windshield wipers with mist cycle and wiper deicer

Rear-window defogger with auto-off timer

Intelligent high-beam headlamps⁴⁰

LED headlamps with dynamic auto leveling

Dual-swivel Adaptive Front Lighting System (AFS)¹⁸ with headlamp washers

Daytime running lights and integrated foglamps

LED taillamps

PASSIVE SAFETY

Driver's and front passenger's advanced airbag system (SRS)²⁴ with front passenger's twin-chamber airbag (SRS)²⁴

Front seat-mounted side airbags (SRS)²⁴

Driver's and front passenger's knee airbags (SRS)²⁴

Front and rear side curtain airbags (SRS)²⁴

Advanced active front headrests³⁷

Three-point seatbelts for all seating positions, pre-tensioners with force limiters for front and outboard rear seats

Automatic Locking Retractor/Emergency Locking Retractor (ALR/ELR) seatbelts for rear outboard seating positions. Emergency Locking Retractor (ELR) only for driver's seat

Height-adjustable front shoulder belt anchors

Child Restraint Seat (CRS) tether anchor brackets for rear outboard seating positions

Highly rigid body structure with front and rear crumple zones

Side-impact door beams, reinforcements in pillars and door sills

Impact-dissipating upper interior trim and collapsible steering column

SECURITY

Safety Connect^{®20,22} features Automatic Collision Notification, Stolen Vehicle Location, Emergency Assistance Button (SOS) and Enhanced Roadside Assistance services.²³ Subscription required. One-year trial subscription included

Vehicle theft-deterrent and engine-immobilizer system³²

Emergency interior trunk release

First aid kit

Tool kit

امداد خودرو فارما

تلفن شبانه روزی: ۰۲۱-۸۸۶۲۰۸۵

FarmaSOS.com

LS 600h L PACKAGES*

PREMIUM PACKAGE II

Four-zone automatic climate control with interior air filter, smog sensor, automatic recirculation mode and rear-seat Air Purifier

Rear-Seat Entertainment System (RSES) with power nine-inch screen, rear-seat audio controls and wireless headphones⁴¹

Climate-comfort power rear seats with power-adjustable butterfly headrests, memory and power lumbar massage and adjustment for outboard seats

Rear-seat side airbags (SRS)²⁴

EXECUTIVE-CLASS SEATING PACKAGE (special order only)

Four-person seating with rear fixed console²

Four-zone automatic climate control with rear-seat infrared temperature sensor, interior air filter, smog sensor, automatic recirculation mode and rear-seat Air Purifier

Climate-comfort power rear seats with power-adjustable butterfly headrests, memory and left-rear power lumbar massage and adjustment

Right-rear power recliner with multifunction massager, adjustment and leg rest^{1,2}

Rear-seat wood-trimmed table

DVD Rear-Seat Entertainment System (RSES) with power nine-inch screen, audio controls and wireless headphones⁴¹

18 x 7.5-in 10-spoke alloy wheels with 235/50VR18 all-season tires²⁷

Rear-seat side airbags (SRS)²⁴

LS 600h L OPTIONS

Advanced Pre-Collision System¹⁷ with Active Pedestrian Detection System,²⁵ Lane Keep Assist¹⁶ and Driver Attention Monitor¹⁷

Pre-Collision System (PCS)³⁸ and Dynamic Radar Cruise Control¹⁵

امداد خودرو فارما

تلفن شبانه روزی: ۰۲۱ ۸۸۶۲۰۸۵

FarmaSOS.com

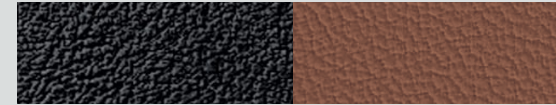
*Please see page 97 for more information regarding options/accessories/packages.
See disclaimers on page 97.

LS 460 SPORT COLOR AND TRIM



تلفن شبانه روزی: ۰۲۱-۸۸۶۲۰۸۵

INTERIOR COLORS AND WOOD TRIM



Black with Saddle Tan
Accent Leather



Matte Dark Brown Ash Burl
Wood Trim



Mercury
Metallic



Starfire
Pearl



Matador
Red Mica



Smoky
Granite
Mica



Deep Sea
Mica



Obsidian

COLOR AVAILABILITY

- Mercury Metallic
- Starfire Pearl
- Matador Red Mica
- Smoky Granite Mica
- Deep Sea Mica
- Obsidian
- Matte Dark Brown Ash Burl Wood Trim

Black with Saddle Tan
Accent Leather

-
-
-
-
-
-
-

HEADROOM
front/rear
38.0/37.9 in (965/964 mm)

SHOULDER ROOM
front/rear
58.5/56.9 in (1,487/1,446 mm)

HIP ROOM
front/rear
55.4/55.5 in (1,407/1,410 mm)

HEIGHT
57.7 in (1,466 mm)

Note: 2011 LS 460 shown.



WIDTH 73.8 in (1,875 mm)

TRUNK CAPACITY
18.0 cu ft (510 L)

FUEL-TANK CAPACITY
22.2 gal (84 L)

Note: 2011 LS 460 shown.



WHEELBASE 116.9 in (2,970 mm)

OVERALL LENGTH 199.2 in (5,060 mm)

LS 460 SPORT
WHEEL



19-in split-10-spoke forged alloy wheels¹¹
STANDARD

LS 460 SPORT BODY AND DIMENSIONS

See disclaimers on page 97.

LUXURY

PERFORMANCE

HYBRID

INNOVATION

SPECS

LS 460 SPORT SPECIFICATIONS

ENGINE

TYPE	90° V8, aluminum block and heads, direct and port fuel injection
DISPLACEMENT	4.6 liters (281 cubic inches)
VALVETRAIN	Four cam, four valves per cylinder, with dual Variable Valve Timing with intelligence and Electronic intake valve timing (VVT-iE)
HORSEPOWER AT RPM	380 hp @ 6,400 ⁸
TORQUE AT RPM	367 lb-ft @ 4,100 ⁸
EMISSION RATING	Certified Ultra-Low Emission Vehicle (ULEV II)

DRIVETRAIN

TRANSMISSION	Eight-speed paddle-shift sequential automatic Electronically Controlled Transmission with intelligence (ECT-i), paddle shifters and downshift rev matching
DRIVE WHEELS	Rear, with standard Vehicle Dynamics Integrated Management (VDIM) ²⁸
FINAL DRIVE RATIO	2.937:1

GENERAL

TYPE	Five-passenger luxury sedan
CONSTRUCTION	Welded-steel unibody
CURB WEIGHT	4,475 lb (2,029 kg)

PERFORMANCE

0-60 MPH ACCELERATION	5.4 seconds ^{8,9}
1/4 MILE ACCELERATION	14.0 seconds ^{8,9}
TOP TRACK SPEED	130 mph (electronically limited) ^{8,9}
EPA FUEL ECONOMY ESTIMATES	16/24 mpg (city/highway) ²⁹
AERODYNAMIC DRAG COEFFICIENT	0.26
TURNING CIRCLE	36.1ft

CHASSIS

SUSPENSION	Front: Independent, upper and lower multi-link double-joint suspension arms with stabilizer bar. Rear: Independent, multi-link with stabilizer bar Sport-tuned, height-adjustable Adaptive Variable Air Suspension (AVS) with air springs and electronically modulated damping
STEERING	Electronic Power Steering system (EPS) 3.2 turns lock-to-lock
BRAKES	Four-wheel power-assisted disc brakes with Electronic Controlled Braking (ECB), four-sensor, four-channel Anti-lock Braking System (ABS), Electronic Brakeforce Distribution (EBD) and Brake Assist ³⁰ Brembo® 14.8-in drilled rotors with six-piston-opposed aluminum calipers, high-friction brake pads, ¹⁰ front. 13.1-in drilled rotors with two-piston-opposed aluminum calipers, high-friction brake pads, ¹⁰ rear
WHEELS AND TIRES	19 x 8.0-in split-10-spoke forged alloy wheels with 245/45YR19 summer tires ¹¹

FarmaSOS.com

مشاوره شبانه روزی: ۰۲۱-۸۸۶۲۰۸۵

امداد خودرو فارما

LS 460 SPORT STANDARD LUXURY FEATURES

LUXURY AND CONVENIENCE

- SmartAccess^{31,32} with push-button Start/Stop
- Remote-linked window/moonroof opening and closing
- Dual-zone automatic climate control with interior air filter, smog sensor and automatic recirculation mode
- Lexus Memory System to control power front seats (except lumbar), outside mirrors and steering wheel
- Power tilt-and-telescopic steering column
- Power windows and tilt-and-slide moonroof with one-touch open/close
- Electrochromic (auto-dimming) inside rearview mirror and outside mirrors
- Auto on/off projector-beam headlamps with auto-off delay
- Cruise control
- HomeLink[®] universal transceiver to operate compatible garage, gate, home lighting and home security systems
- Lexus Personalized Settings (LPS)³³ to customize select electronic functions
- Front- and rear-lighted vanity mirrors
- Front spoiler, rocker panel and rear bumper extensions
- Power-adjustable, auto-folding outside mirrors with turn indicators, defoggers, puddle lamps and auto tilt-down in reverse
- Scratch-resistant clearcoat paint
- Sport grille

COMMUNICATION, AUDIO AND NAVIGATION

- Multi-information center-console display with integrated backup camera²⁶ and Enhanced Bluetooth[®] technology⁷
- Lexus 10-speaker Premium Sound System with Digital Sound Processor, Automatic Sound Levelizer (ASL), in-dash, single-feed, six-disc CD auto-changer
- XM^{5,6} Radio. Subscription required. 90-day trial subscription included
- USB input and Bluetooth[®] wireless audio³⁴ profile for integration of compatible music players with audio system and A/V inputs and rear headphone jacks

SEATING AND TRIM

- Matte dark brown ash burl trim
- Leather-trimmed interior
- Leather-trimmed heated Sport steering wheel with paddle shifters
- Wood- and leather-trimmed shift knob
- 16-way driver's (including dual-function lumbar) with auto slide-away and 12-way front passenger's (including lumbar) power sport seats
- Height-adjustable headrests for all seats

INSTRUMENTATION AND CONTROLS

- Steering-wheel-mounted audio, brake hold and display controls
- Electronic TFT (Thin Film Transistor) multi-information display
- Electroluminescent instrumentation
- Illuminated interior electronic trunk-lid and fuel-filler door releases
- ECO indicator

FarmaSOS.com

تلفن شبانه روزی: ۰۲۱-۸۸۶۲۰۸۵

امداد خودرو فارسیا

STANDARD SAFETY AND SECURITY FEATURES

ACTIVE SAFETY

Vehicle Dynamics Integrated Management (VDIM)²⁸ with Vehicle Stability Control (VSC)²⁸ and Traction Control (TRAC)

Four-wheel ventilated power-assisted disc brakes with Electronic Controlled Braking (ECB), four-sensor, four-channel Anti-lock Braking System (ABS), Brake Assist³⁰ and Electronic Brakeforce Distribution (EBD)

Smart Stop Technology³⁵

Direct Tire Pressure Monitor System³⁶

Rain-sensing intermittent windshield wipers with mist cycle

Rear-window defogger with auto-off timer

High-Intensity Discharge (HID) headlamps with dynamic auto leveling

Dual-swivel Adaptive Front Lighting System (AFS)¹⁸

Daytime running lights and integrated foglamps

LED taillamps

PASSIVE SAFETY

Driver's and front passenger's advanced airbag system (SRS)²⁴ with front passenger's twin-chamber airbag (SRS)²⁴ تلفن شبانه روزی: ۰۸۵-۸۸۸۶۲-۲۱

Front seat-mounted side airbags (SRS)²⁴

Driver's and front passenger's knee airbags (SRS)²⁴

Front and rear side curtain airbags (SRS)²⁴

Advanced active front headrests³⁷

Three-point seatbelts for all seating positions, pre-tensioners with force limiters for front and outboard rear seats

Automatic Locking Retractor/Emergency Locking Retractor (ALR/ELR) seatbelts for rear outboard seating positions. Emergency Locking Retractor (ELR) only for driver's seat

Height-adjustable front shoulder belt anchors

Child Restraint Seat (CRS) tether anchor brackets for rear outboard seating positions

Highly rigid body structure with front and rear crumple zones

Side-impact door beams

Reinforcements in pillars and door sills

Impact-dissipating upper interior trim

Collapsible steering column

SECURITY

Safety Connect^{®20,22} features Automatic Collision Notification, Stolen Vehicle Location, Emergency Assistance Button (SOS) and Enhanced Roadside Assistance services.²³ Subscription required. One-year trial subscription included

Vehicle theft-deterrent and engine-immobilizer system³²

Emergency interior trunk release

First aid kit

Tool kit

امداد خودرو فارما

FarmaSOS.com

LS 460 SPORT PACKAGES*

COMFORT PACKAGE

Climate-comfort front seats with heat/cool knob, heated rear seats

Intuitive Parking Assist

Power rear sunshade

Headlamp washers

Power door closers and one-touch power trunk open/close

NAVIGATION SYSTEM/MARK LEVINSON® REFERENCE SURROUND SOUND AUDIO SYSTEM PACKAGE

HDD Navigation System⁵ including voice command, color LCD display and Enhanced Bluetooth® technology⁷

Lexus Enform^{®20,21} offers Destination Assist, eDestination and Lexus Insider. Subscription required. One-year trial subscription included

XM NavTraffic^{®5,6}, XM NavWeather^{™5,6} and XM Sports and Stocks.^{5,6} Subscription required. 90-day trial subscription included

Mark Levinson 19-speaker Reference Surround Sound Audio System³ with in-dash, single-feed, six-disc DVD/CD auto-changer

NAVIGATION SYSTEM/MARK LEVINSON REFERENCE SURROUND SOUND AUDIO SYSTEM/ADVANCED PARKING GUIDANCE SYSTEM PACKAGE

Includes all Navigation System/Mark Levinson Reference Surround Sound Audio System Package features plus:

Advanced Parking Guidance System¹⁹

COLD WEATHER PACKAGE

Windshield-wiper deicer

Enhanced interior heater

Higher-capacity battery

LS 460 SPORT OPTIONS

HDD Navigation System⁵ including voice command; color LCD display; XM NavTraffic,^{5,6} XM NavWeather^{5,6} and XM Sports and Stocks.^{5,6} Subscription required. 90-day trial subscription included; and Lexus Enform.^{20,21} Subscription required. One-year trial subscription included Pre-Collision System (PCS)³⁸ and Dynamic Radar Cruise Control¹⁵

امداد خودرو فارما

تلفن شبانه روزی: ۰۲۱-۸۸۶۲۰۸۵

FarmaSOS.com

*Please see page 97 for more information regarding options/accessories/packages.
See disclaimers on page 97.

ACCESSORIES*



- 1 Rear bumper appliqué
- 2 18-in Teleios alloy wheel²⁷ (LS only)
- 3 Paint protection film⁴³
- 4 Carpet cargo mat
- 5 First aid kit
- 6 Car cover
- 7 Cargo net – envelope
- 8 Premium carpet floor mats⁴⁴
- 9 Wheel locks
- 10 Wireless headphones⁴¹
- 11 Ashtray
- 12 Lexus Hybrid Drive window sticker (LSH only)



*Please see page 97 for more information on options/accessories/packages.

See disclaimers on page 97.

LUXURY

PERFORMANCE

HYBRID

INNOVATION

SPECS



WARRANTY

Four-year/50,000-mile Lexus Limited Warranty. Six-year/70,000-mile Powertrain Warranty. Six-year/unlimited-mileage Corrosion Perforation Warranty. All warranties with zero deductible. See the LS and LSh Warranty and Services Guides at your Lexus dealer for details.

1. Leg rest may not fully recline based on height of rear-seat passenger. Do not allow passengers to sit in a seat that has been fully or severely reclined while driving. This feature is intended for use only when the vehicle is parked. While the vehicle is being driven, all vehicle occupants should have the seatback upright, sit well back in the seat and properly wear the seatbelts provided. In the event of a collision, the more the seat is reclined, the greater the risk of death or personal injury. Please see your *Owner's Manual* for additional information. 2. If leg rest is in use, seating capacity could be reduced from four to three. 3. Mark Levinson® is a registered trademark of Harman International Industries, Inc. 4. Continuous average power, all channels driven, at less than 01% THD; 20–20,000 Hz. 5. Availability and accuracy of the information provided by the Navigation System or any XM services mentioned (if installed) are dependent upon many factors. Use common sense when relying on information provided. Services not available in every city or roadway. Periodic Navigation updates available at additional cost. Please see your *Navigation System Owner's Manual* or contact XM for details. 6. XM services require a subscription after trial period. Subscriptions governed by XM Customer Agreement available at xmradio.com. If you decide to continue your XM service at the end of your complimentary trial, the plan you choose will automatically renew and bill at then-current rates unless you call 1-800-967-2346 to cancel. Fees and programming subject to change. Available only to those at least 18 years of age in the 48 contiguous United States and DC. 7. Bluetooth® technology phones listed on Lexus.com have been tested for compatibility with Lexus vehicles. Performance will vary based on phone software version, coverage and your wireless carrier. Phones are warranted by their manufacturer, not Lexus. 8. Ratings achieved using the required premium unleaded gasoline with an octane rating of 91 or higher. If premium fuel is not used, performance will decrease. 9. Performance figures are for comparison only and were obtained with prototype vehicles by professional drivers using special safety equipment and procedures. Do not attempt. 10. High-friction brakes require periodic inspection and measurement as outlined in the *Warranty and Services Guide*. The pads and rotors are expected to experience greater wear than conventional brakes. Pad life may be less than 20,000 miles, and brake rotor life may be less than 50,000 miles depending on driving conditions. 11. 19-in performance tires are expected to experience greater tire wear than conventional tires. Tire life may be substantially less than 15,000 miles, depending upon driving conditions. 12. TORSEN® is a registered trademark of Zexel Torsen, Inc. 13. The Lexus Hybrids emit fewer smog-forming emissions than the average new vehicle. 14. Lane Departure Warning is designed to read the lane markers of certain roads. If the vehicle approaches the outer limits of its lane, the system sounds a warning tone and applies slight torque to the steering wheel to notify the driver that corrective action may be required. It is not a collision-avoidance system and is not a substitute for safe and attentive driving. System effectiveness depends on many factors. Please see your *Owner's Manual* for further information. 15. Dynamic Radar Cruise Control is designed to assist the driver and is not a substitute for safe and attentive driving practices. Please see your *Owner's Manual* for important instructions and cautions. 16. Lane Keep Assist is designed to read the lane markers of certain roads and apply slight torque to the steering wheel to help keep the car in the center of the lane. It is not a collision-avoidance system and is not a substitute for safe and attentive driving. System effectiveness depends on many factors. Please see your *Owner's Manual* for further information. 17. The Advanced Pre-Collision System is designed to help reduce the crash speed and damage in certain frontal collisions only. The included Driver Attention Monitor is designed to alert the driver if a potential hazard is detected ahead and the driver's face appears to be turned away. They are not collision-avoidance systems and are not substitutes for safe and attentive driving. System effectiveness depends on many factors. Please see your *Owner's Manual* for further information. 18. The Adaptive Front Lighting System can help improve vision at night. However, conditions such as dirty windshield, rapidly changing light conditions or hilly terrain will limit effectiveness so the driver may need to manually change the high beams from on to off. Please see your *Owner's Manual* for details. 19. The Advanced Parking Guidance System requires driver brake control. Always look around outside the vehicle and use mirrors to confirm clearance. 20. Lexus Enform® and Safety Connect® are available. Contact with the Lexus Enform and/or Safety Connect response center is dependent upon the telematics device being in operative condition, cellular connection availability, navigation map data and GPS satellite signal reception, which can limit the ability to reach the response center or receive emergency support. Enrollment and Telematics Subscription Service Agreement required. One-year trial subscription available only with new vehicle purchase of Lexus Enform- and Safety Connect-equipped vehicles. Additional subscription terms available; charges vary by subscription term selected. 21. Lexus Enform premium services Destination Assist and eDestination will function in the contiguous United States and Washington, DC. These services may also function in Hawaii and limited areas of Alaska for vehicles that contain map data for those states. They will not function in Canada or in other countries outside the United States. 22. Safety Connect services will function in the United States, including Hawaii and Alaska, and in Canada. The services will not function outside of the United States in countries other than Canada. 23. Coverage only available in the continental U.S. and Canada. Please see your Lexus dealer for details. 24. All the airbag (AB) systems are Supplemental Restraint Systems. All ABs (if installed) are designed to inflate only under certain conditions and in certain types of severe collisions: frontal and knee ABs typically inflate in frontal collisions; side and side curtain ABs in side collisions; Roll-Sensing Curtain ABs at a severe tilt degree, roll or lateral G-force. In all other accidents, the ABs will not inflate. To decrease the risk of injury from an inflating AB, always wear seatbelts, sit upright in the middle of the seat as far back as possible and do not lean against the door. Do not put objects in front of an AB or around the seatback. Do not use a rearward-facing child seat in any front passenger seat. The force of an inflating AB may cause serious injury or death. Please see your *Owner's Manual* for further information/warnings. 25. The Active Pedestrian Detection System, part of the Advanced Pre-Collision System, is designed to help reduce the impact speed and damage in certain frontal collisions only. It is not a collision-avoidance system and is not a substitute for safe and attentive driving. System effectiveness depends on many factors, such as speed, driver input and road conditions. Please see your *Owner's Manual* for further information. 26. The backup camera does not provide a comprehensive view of the rear area of the vehicle. You should also look around outside your vehicle and use your mirrors to confirm rearward clearance. Cold weather will limit effectiveness and view may become cloudy. 27. 18-in performance tires are expected to experience greater tire wear than conventional tires. Tire life may be substantially less than 15,000 miles, depending upon driving conditions. 28. Vehicle Dynamics Integrated Management (VDIM) is an electronic system designed to help the driver maintain vehicle control under adverse conditions. It is not a substitute for safe driving practices. Factors including speed, road conditions and driver steering input can all affect whether VDIM will be effective in preventing a loss of control. Please see your *Owner's Manual* for further details. 29. EPA MPG Estimates. Actual mileage will vary. 30. Brake Assist is designed to help the driver take full advantage of the benefits of ABS. It is not a substitute for safe driving practices. Braking effectiveness also depends on proper brake-system maintenance and tire and road conditions. 31. The SmartAccess system may interfere with some pacemakers or cardiac defibrillators. If you have one of these medical devices, please talk to your doctor to see if you should deactivate this system. 32. The engine immobilizer is a state-of-the-art anti-theft system. When you insert your key into the ignition switch or bring a SmartAccess fob into the vehicle, the key transmits an electronic code to the vehicle. The engine will only start if the code in the transponder chip inside the key or SmartAccess fob matches the code in the vehicle's immobilizer. Because the transponder chip is embedded in the key or SmartAccess fob, it can be costly to replace. If you lose a key or SmartAccess fob, your Lexus dealer can help. Alternatively, you can find a qualified independent locksmith to perform high-security key services by consulting your local Yellow Pages or by contacting www.aloa.org. 33. The Lexus Personalized Settings (LPS) can be programmed in two ways: For most models equipped with the available Navigation System, the driver can modify the settings themselves; for other models, including those without a Navigation System, programming is done by your Lexus dealer via a one-time, complimentary offer during the first 12 months from the date the vehicle is sold. Please see your Lexus dealer for more information. 34. Bluetooth audio device must be enabled with A2DP and AVRCP. 35. Smart Stop Technology operates only in the event of certain simultaneous brake and gas pedal applications. When engaged, the system will reduce engine power to help the brakes bring the vehicle to a stop. Factors including speed, road conditions and driver input can all impact stopping distance. Smart Stop Technology is not a substitute for safe and attentive driving and does not guarantee instant stopping. Please see your *Owner's Manual* for further details. 36. The Tire Pressure Monitor System alerts the driver when tire pressure is critically low. For optimal tire wear and performance, tire pressure should be checked regularly with a gauge; do not rely solely on the monitor system. Please see your *Owner's Manual* for details. 37. Active headrests can help reduce the extent of whiplash in certain types of rear-end collisions. 38. The Pre-Collision System is designed to help reduce the crash speed and damage in certain frontal collisions only. It is not a collision-avoidance system and is not a substitute for safe and attentive driving. System effectiveness depends on many factors, such as speed, driver input and road conditions. Please see your *Owner's Manual* for further information. 39. Trunk space is reduced with this package, please see specifications. 40. The intelligent high-beam headlamps can help improve vision at night. However, conditions such as a dirty windshield, rapidly changing light conditions or hilly terrain will limit effectiveness so the driver may need to manually change the high beams from on to off. Please see your *Owners Manual* for details. 41. Headphones are for passenger use only. Do not use while operating vehicle. 42. CAUTION! When driving a hybrid vehicle, pay special attention to the area around the vehicle. Because there is little vehicle noise in electric-only mode, pedestrians, people riding bicycles or other people and vehicles in the area may not be aware of the vehicle starting off or approaching them, so take extra care while driving. 43. Currently only available pre-installed on select vehicles. Ask your Dealer Sales Consultant for vehicle application. 44. To avoid interference with pedal operation, do not install a floor mat on top of an existing floor mat, and each mat must be secured with retention hooks (clips). This floor mat was designed specifically for use in this model and model year vehicle and SHOULD NOT be used in any other vehicle.

*Lexus strives to build vehicles to match customer interest, and thus they typically are built with popular options and option packages. Not all options/packages are available separately, and some may not be available in all regions of the country. See Lexus.com for information about options/packages commonly available in your area. If you would prefer a vehicle without any or with different options, contact your dealer to check for current availability or the possibility of placing a special order. Specifications, features, equipment, technical data, performance figures, options, and color and trim are based upon information available at time of printing, are subject to change without notice, are for mainland U.S.A. vehicles only. Some vehicles shown with available equipment. See your Lexus dealer for details. Lexus reminds you to wear seatbelts, secure children in rear seat, obey all traffic laws and drive responsibly. For more information, call 800-USA-LEXUS (872-5398) or visit Lexus.com. To learn more about your financing options, contact your Lexus dealer or call Lexus Financial Services at 800-874-7050.

LUXURY PERFORMANCE HYBRID INNOVATION SPECS