

15 | IS C.

امداد خودرو فارما



IS 250/350 C

306-hp,¹ 3.5-liter V6 (IS 350 C) or 204-hp,¹ 2.5-liter V6 (IS 250 C); dual Variable Valve Timing with intelligence (VVT-i); and a six-speed Electronically Controlled Transmission with intelligence (ECT-i) and paddle shifters.

IS 250/350 C F SPORT

F SPORT styling including mesh grilles, heated and ventilated front seats, F SPORT 18-in wheels,² F SPORT suspension and Electronic Power Steering (EPS) tuning, aluminum pedals, Silver Metallic interior trim and F SPORT steering wheel and shifter.

EXHILARATION,
MEET LIBERATION.





INTRODUCING THE 2015 LEXUS IS C



- A.** Available High-Intensity Discharge (HID) headlamps with LED daytime running lights (DRL)
- B.** Available Navigation System³
- C.** F SPORT Accessory front brake upgrade.^{4,5} For a complete list of Genuine Lexus Accessories, visit lexus.com/ISC/accessories
- D.** Available Saddle leather interior trim
- E.** Driver-focused cockpit
- F.** Alabaster leather interior trim with accessory wind screen

AS RESPONSIVE TO YOUR LIFE AS IT IS TO THE ROAD.



RETRACTABLE HARDTOP

Operated via 13 electric motors, 33 sensors and a dedicated Electronic Control Unit (ECU), this three-piece hardtop retracts in approximately 20 seconds, making it among the fastest in its class. And since the top is made of high-strength, lightweight aluminum, it minimizes rearward weight transfer when the top is down.



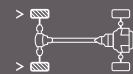
OPTIMIZED SUSPENSION

Achieving a high-performance experience—regardless of the top's position—starts with the suspension system. The chassis' upper support bracket is reinforced for the rear shock absorbers, and the suspension bushings and rear-suspension rubber mount are also optimized. Front and rear springs and shock absorbers are fine-tuned for an optimum balance between comfortable ride and responsive handling.



ADVANCED AUDIO SYSTEM

The IS C's audio system was designed to overcome acoustical weaknesses associated with convertibles. When the top is lowered, the equalizer curve and volume are adjusted to compensate for the additional road and wind noise, especially preserving the bass tones, which are often lost in open-air environments. The result is a totally immersive audio experience that will bring new life to your favorite tracks.



DYNAMIC HANDLING

The IS C comes equipped with rear-wheel drive to help optimize vehicle handling and balance. There's also the Vehicle Dynamics Integrated Management (VDIM)⁶ system, which is designed to help minimize the loss of traction in a turn and help the driver maintain vehicle control under adverse situations.



LEXUS ENFORM APP SUITE

The subscription-free Lexus Enform App Suite⁷ uses your compatible smartphone to give you in-vehicle access to some of your favorite mobile applications. You can order movie tickets from the console, personalize your Pandora^{®8} playlist and even make dinner reservations. *Learn more at lexus.com/enform.*



ONE-TOUCH REAR-SEAT ACCESS

Not only does the IS C have a rear seat, but it has one you can actually use. With available one-touch access, passengers can quickly slide the front seats forward. There's also a lever on the inside of the seat that allows the driver to easily move the front seatback forward.



AERODYNAMIC DESIGN

To make the IS C more aerodynamic, Lexus engineers meticulously adjusted the angle and shape of the windshield, the size of the cabin, the contour of the taillamps and even the height of the trunk lid. This all helps improve airflow over, under and around the vehicle to a mere 0.29 coefficient of drag, resulting in a quieter cabin and better control at higher speeds.



SIX-SPEED PADDLE-SHIFT AUTOMATIC TRANSMISSION

The six gears found in the IS C's automatic transmission allow for optimum gear selection, based on conditions. In addition, racing-inspired paddle shifters are integrated into the steering wheel, allowing you to quickly shift gears without removing your hands from the steering wheel.



تلفن شبانه روزی: ۰۲۱-۸۸۸۶۲۰۸۵

FarmaSOS.com

KEY
STANDARD
FEATURES

Three-piece retractable hardtop // SmartAccess^{9,10} with push-button Start/Stop // Dual-zone climate control with interior air filter // Electroluminescent instrumentation // HomeLink[®] universal transceiver // Leather interior trim // Power-adjustable front seats // Bluetooth^{®11} phone and audio¹² connectivity // LED foglamps // USB iPod^{®13} connectivity // Six standard airbags¹⁴

INDIVIDUAL
OPTIONS

Bi-Xenon High-Intensity Discharge (HID) headlamps with LED daytime running lights and dynamic auto-leveling // Heated and ventilated front seats with perforated leather-trimmed interior and Espresso or Dark Gray bird's-eye maple interior trim // Pre-Collision System (PCS)¹⁵ and Dynamic Radar Cruise Control¹⁶ // Wind screen

PACKAGES

NAVIGATION PACKAGE

Navigation System including voice command, color multimedia display and Enhanced Bluetooth¹¹ technology // NavTraffic,^{TM3,17} NavWeather,^{TM3,17} Fuel Prices, Sports and Stocks from SiriusXM.^{®3,17} Subscription required. One-year trial subscription included // Lexus Enform App Suite with Bing,TM iHeartRadio, OpenTable,[®] MovieTickets.com, Pandora[®] Yelp[®] and Facebook Places // Lexus Enform Destinations. Subscription required. One-year trial subscription included // Lexus Enform Safety Connect.¹⁸ Subscription required. One-year trial subscription included // DVD/CD player // HD Radio^{TM19} with iTunes[®] tagging¹³

NAVIGATION/MARK LEVINSON[®] AUDIO PACKAGE

(Includes Navigation Package) + Mark Levinson 12-speaker 270-watt @ less than 0.1% THD, 20-20,000 Hz²⁰ Premium Surround Sound Audio System²¹ with 5.1-channel architecture

LUXURY PACKAGE

Perforated semi-aniline leather interior trim // Heated and ventilated front seats // Lexus Memory System to control power driver's and front passenger's seats (except lumbar), outside mirrors and steering wheel // Rain-sensing intermittent windshield wipers with mist cycle // Electrochromic (auto-dimming) outside mirrors with auto tilt-down in reverse // Espresso or Dark Gray bird's-eye maple interior trim // Bi-XenonTM High-Intensity Discharge (HID) headlamps // Illuminated door-sill scuff plates // One-touch power slide/fold/return front seats for easier rear-seat access

F SPORT

FSPORT front fascia // 18-in split-five-spoke alloy wheels with Dark Graphite finish and all-season or summer tires² // FSPORT suspension and EPS tuning // Black leather interior trim with white perforations // Black headliner // FSPORT steering wheel, shift knob and exterior badging // Heated and ventilated front seats // Aluminum door-sill scuff plates // Aluminum sport pedals // Silver Metallic finish interior trim

WHEELS



17-in 10-spoke alloy wheels² Standard



18-in five-spoke alloy wheels² with Liquid Graphite finish Available



18-in split-five-spoke alloy wheels² Available



18-in split-five-spoke alloy wheels² with Dark Graphite finish Standard ISC FSPORT



FSPORT 19-in full-face forged alloy wheels^{2,4} Available



FSPORT 19-in forged alloy wheels^{2,4} Available



18-in G-Spider alloy wheels² Available

KEY SPECS

2.5L V6

IS 250 C

3.5L V6

IS 350 C

0-60 IN 8.4^{S22} / 5.8^{S22}

IS 250 C

IS 350 C

ENGINE

PERFORMANCE

204^{HP1}

IS 250 C

306^{HP1}

IS 350 C

HORSEPOWER

6-SPEED

IS 250 C/IS 350 C

PADDLE-SHIFT SEQUENTIAL AUTOMATIC TRANSMISSION

RWD

STANDARD

21 / 30 / 24²³ EST MPG

IS 250 C

19 / 27 / 22²³ EST MPG

IS 350 C

DRIVETRAIN

FUEL ECONOMY, EPA-ESTIMATED RATINGS (CITY/HIGHWAY/COMBINED)



HEIGHT

55.7 IN



WHEELBASE

107.5 IN

WIDTH

70.9 IN

OVERALL LENGTH

182.5 IN

INTERIOR



BLACK
LEATHER or
SEMI-ANILINE
LEATHER*



ALABASTER
LEATHER



LIGHT GRAY
SEMI-ANILINE
LEATHER*

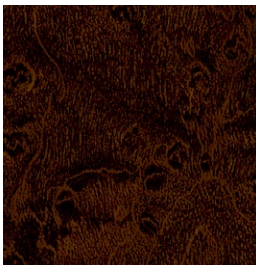


SADDLE
SEMI-ANILINE
LEATHER*



RED
SEMI-ANILINE
LEATHER*

TRIM



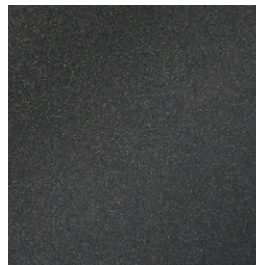
ESPRESSO
BIRD'S-EYE
MAPLE*



DARK GRAY
BIRD'S-EYE
MAPLE*



BLACK
METALLIC
FINISH



SILVER
METALLIC
FINISH**

LEATHER or SEMI-ANILINE* INTERIOR	EXTERIOR	Starfire Pearl	Matador Red Mica	Deep Sea Mica	Nebula Gray Pearl	Obsidian	Silver Lining Metallic	Ultra White**	Ultrasonic Blue Mica**	TRIM	Espresso Bird's-Eye Maple*	Dark Gray Bird's-Eye Maple*	Black Metallic Finish	Silver Metallic Finish**
	Black	●	●▲		●▲	●▲	●▲	▲	▲			●	●	▲
	Alabaster	●	●	●	●	●	●				●		●	
	Light Gray*	●	●	●	●	●	●					●		
	Saddle*	●		●	●	●					●			
	Red*	●			●	●						●		

● ISC
▲ ISC FSPORT
*Optional
**FSPORT only

EXTERIOR



STARFIRE PEARL



MATADOR RED MICA



DEEP SEA MICA



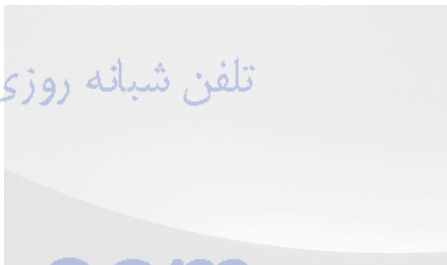
NEBULA GRAY PEARL



OBSIDIAN



SILVER LINING METALLIC



ULTRA WHITE**



ULTRASONIC BLUE MICA**

SERVICES AS INNOVATIVE AS THE CAR ITSELF.

THE LEXUS DELIVERY AND TECHNOLOGY SPECIALISTS. To assist you in getting the most out of your IS C, the Lexus Delivery Specialist will conduct a personalized delivery focused on every feature, setting and function you desire. To answer questions that arise after delivery, the Lexus Technology Specialist can offer expert guidance in person or without you ever leaving the driveway, via camera-enabled iPad®²⁴ apps like FaceTime®.²⁵ Learn more about our Lexus Delivery and Technology Specialist services at lexus.com/specialists.

WARRANTY Four-year/50,000-mile Lexus Limited Warranty. Six-year/70,000-mile Powertrain Warranty. Six-year/unlimited-mileage Corrosion Perforation Warranty. All warranties with zero deductible. See the *IS C Warranty and Services Guide* at your Lexus dealer for details. **DISCLOSURES** **1.** Ratings achieved using the required premium unleaded gasoline with an octane rating of 91 or higher. If premium fuel is not used, performance will decrease. **2.** 17- or 19-in performance tires are expected to experience greater tire wear than conventional tires. Tire life may be substantially less than 20,000 miles (17-in) or 15,000 miles (18-in or 19-in), depending upon driving conditions. **3.** Availability & accuracy of the information provided by the Navigation System is dependent upon many factors. Use common sense when relying on information provided. Services and programming subject to change. Services not available in every city or roadway. Updates may be available at an additional cost from your dealer. See *Navigation System Owner's Manual* for details. **4.** F SPORT Accessories are warranted for 12 months from the date of installation or for the balance of the new-car or Certified Pre-Owned (CPO) warranty in force at the date of installation, whichever is greater, when installed by an authorized Lexus dealer. F SPORT Accessories installed by anyone other than an authorized Lexus dealer are warranted for 12 months from the date of purchase only, and the warranty coverage is limited to the replacement value of the F SPORT Accessories. These warranties do not cover maintenance services such as replacement of brake pads/linings and clutch linings or noise, vibration, cosmetic conditions and other deterioration caused by normal wear and tear. Part failure caused by improper installation by anyone other than an authorized Lexus dealer may void the F SPORT Accessories warranty, the new-vehicle warranty or both. F SPORT is a trademark of Toyota Motor Corporation. Products available through participating Lexus dealers. **5.** With either the front- or rear-brake upgrade, the compact spare tire cannot be used. In the event of a flat, the tire must be repaired or replaced. Brake upgrades will fit 18-in factory option wheels, 18-in Genuine Lexus Accessory wheels or 18-in or 19-in F SPORT wheels only. **6.** Vehicle Stability Control (VSC) and Vehicle Dynamics Integrated Management (VDIM) are electronic systems designed to help the driver maintain control under adverse conditions. They are not substitutes for safe driving practices. Factors including speed, road conditions and driver steering input can all affect whether VSC and VDIM will be effective in preventing a loss of control. See *Owner's Manual* for further details. **7.** Be sure to obey traffic regulations and maintain awareness of road and traffic conditions at all times. Apps/services vary by phone/carrier; functionality depends on many factors. Select apps use large amounts of data; you are responsible for charges. Apps & services subject to change. See lexus.com/enform for details. **8.** PANDORA®, the PANDORA® logo, and the Pandora trade dress are trademarks or registered trademarks of Pandora Media, Inc., used with permission. **9.** The SmartAccess system may interfere with some pacemakers or cardiac defibrillators. If you have one of these medical devices, please talk to your doctor to see if you should deactivate this system. **10.** The engine immobilizer is a state-of-the-art anti-theft system. When you insert your key into the ignition switch or bring a SmartAccess fob into the vehicle, the key transmits an electronic code to the vehicle. The engine will only start if the code in the transponder chip inside the key/fob matches the code in the vehicle's immobilizer. Because the transponder chip is embedded in the key/fob, it can be costly to replace. If you lose a key or fob, your Lexus dealer can help. Alternatively, you can find a qualified independent locksmith to perform high-security key services by consulting your local *Yellow Pages* or by contacting www.aloa.org. **11.** The Bluetooth® word mark and logos are registered trademarks owned by Bluetooth SIG, Inc. and any use of such marks by Lexus is under license. A compatible Bluetooth-enabled phone must first be paired. Phone performance depends on software, coverage & carrier. **12.** Bluetooth® audio device must be enabled with A2DP and AVRCP. **13.** iTunes® and iPod® are registered trademarks of Apple Inc. All rights reserved. **14.** All the airbag (AB) systems are Supplemental Restraint Systems. All ABs are designed to inflate only under certain conditions and in certain types of severe collisions: frontal and knee ABs typically inflate in frontal collisions; side and side curtain ABs in side collisions; Roll-Sensing Curtain ABs at a severe tilt degree, roll or lateral G-force. In all other accidents, the ABs will not inflate. To decrease the risk of injury from an inflating AB, always wear seatbelts, sit upright in the middle of the seat as far back as possible and do not lean against the door. Do not put objects in front of an AB or around the seatback. Do not use a rearward-facing child seat in any front passenger seat. The force of an inflating AB may cause serious injury or death. See *Owner's Manual* for further information/warnings. **15.** The Pre-Collision System is designed to help reduce the crash speed and damage in certain frontal collisions only. It is not a collision-avoidance system and is not a substitute for safe and attentive driving. System effectiveness depends on many factors, such as speed, driver input and road conditions. See *Owner's Manual* for further information. **16.** Dynamic Radar Cruise Control is designed to assist the driver and is not a substitute for safe and attentive driving practices. See *Owner's Manual* for details. **17.** SiriusXM® services require a compatible receiver and a subscription after 90-day trial period. Satellite service is dependent on many factors. Subscriptions governed by SiriusXM® Customer Agreement available at SiriusXM.com. **If you decide to continue your SiriusXM® service at the end of your complimentary trial, the plan you choose will automatically renew and bill at then-current rates unless you call 1-866-635-2349 to cancel.** Fees and programming subject to change. Available only to those at least 18 years of age in the 48 contiguous United States and D.C. **18.** Contact with the response center may not be available in all areas. Service Agreements required. A variety of subscription terms available; charges will vary. See lexus.com for details. **19.** HD Radio™ Technology manufactured under license from iBiquity Digital Corporation U.S. and Foreign Patents. HD Radio™ and the HD, HD Radio, and "Arc" logos are proprietary trademarks of iBiquity Digital Corp. **20.** Continuous average power, all channels driven, at less than 0.1% THD; 20-20,000 Hz. **21.** Mark Levinson® is a registered trademark of Harman International Industries, Inc. **22.** Performance figures are for comparison only and were obtained with prototype vehicles by professional drivers using special safety equipment and procedures. Do not attempt. **23.** 2015 EPA-estimated ratings. Actual mileage will vary. **24.** iPhone® and iPad® are registered trademarks of Apple Inc. All rights reserved. **25.** FaceTime® is a registered trademark of Apple Inc. All rights reserved.

Lexus strives to build vehicles to match customer interest, and thus they typically are built with popular options and option packages. Not all options/packages are available separately, and some may not be available in all regions of the country. See lexus.com for information about options/packages commonly available in your area. If you would prefer a vehicle without any or with different options, contact your dealer to check for current availability or the possibility of placing a special order. Specifications, features, equipment, technical data, performance figures, options, and color and trim are based upon information available at time of printing, are subject to change without notice, and are for mainland U.S.A. vehicles only. Some vehicles shown with available equipment. See your Lexus dealer for details. Lexus reminds you to wear seatbelts, secure children in rear seat, obey all traffic laws and drive responsibly. For more information, call 800-USA-LEXUS (872-5398) or visit lexus.com. To learn more about your financing options, contact your Lexus dealer or call Lexus Financial Services at 800-874-7050.

