



IS

LEXUS | 2013

THE 2013
IS LINE

MODEL INTROS

- IS LINE
- IS C
- IS F
- IS



ISF



IS 250 IS 250 AWD IS 350 IS 350 AWD IS F SPORT



IS 250 C IS 350 C IS C F SPORT

POWER TO THE
POWER OF THREE.

WHICHEVER path you choose, the innovation and driving-inspired performance of an IS guarantees one thrilling ride. But each IS model also stands alone—projecting a singular personality and unique appeal. The ISF is the fastest, most dominant performance sedan we've created to date. The design of the IS sedan was inspired by the exclusive world of competitive racing, and it's also available in an exhilarating F SPORT model. The IS C features a precision-engineered retractable hardtop and, for the first time, boasts its own F SPORT model. Despite their differences, each is crafted purely for driving pleasure.

Optional equipment shown.

MODEL INTROS

COCKPIT

PERFORMANCE

INNOVATION

SPECS

THE 2013
ISC

MODEL INTROS

COCKPIT

PERFORMANCE

INNOVATION

SPECS



ایراد خودرو فارما

تلفن شماره ۰۲۱-۸۸۸۶۲۰۸

FarmaSOS.com

LIVE A LITTLE.
A LOT.

A three-piece folding hardtop transforms the ISC and ISC F SPORT from sleek coupes into stunning convertibles.

Optional equipment shown.

THE 2013
IS F

MODEL INTROS

COCKPIT

PERFORMANCE

INNOVATION

SPECS

EVERYTHING
YOU THOUGHT WE WEREN'T.

A 416-horsepower¹ V8 with 371 lb-ft of torque¹ gives the IS F all the acceleration you could possibly crave. A scorching 0 to 60 in just 4.6 seconds^{1,2} proves our point.

See disclosures on page 82.

THE 2013
IS

MODEL INTROS

COCKPIT

PERFORMANCE

INNOVATION

SPECS



ELEGANT MEETS
AGGRO.

With the force of its V6 engine, paddle shifters and programmable shift lights, the IS sport sedan delivers authentic performance and style to automotive enthusiasts.

Optional equipment shown.

امداد خودرو فارما

تلفن شبانه روزی: ۰۲۱-۸۸۶۲۰۸۵

FarmaSOS.com

THE 2013
IS LINE

FULL-THROTTLE
GRATIFICATION.

COCKPIT

ISC

AMENITIES

SOUND

ACCESS

تلفن شبانه روزی: ۰۲۱-۸۸۸۶۲۰۸۵

FarmaSOS.com

ULTIMATELY, the IS is designed for the bold pursuit of pleasure. And for you and your passengers, there are reminders at every turn. The snug cockpit feel of the interior. Bolstered front seats wrapped in rich leather trim.

The astonishing clarity of the available Mark Levinson® Premium Surround Sound Audio System.³ Even the available Navigation System⁴ is geared for exhilaration. And the available Lexus Enform® App Suite⁵ uses your compatible smartphone to give you in-vehicle access to your favorite mobile applications.

Optional equipment shown.
See disclosures on page 82.

ISC shown.

MODEL INTROS

COCKPIT

PERFORMANCE

INNOVATION

SPECS

YOUR NIGHT?
WIDE OPEN.

ایراد خودرو فارما

تلفن شبانه روزی: ۰۲۱-۸۸۶۲۰۸۵

Farma33.com

Liberate your wild side in the IS Convertible. Stellar performance and dynamic handling keep your adrenaline pumping while state-of-the-art innovations like an advanced Navigation System⁴ help you navigate the evening.

Available heated and ventilated front seats are designed specifically for the cabin whether the hardtop is retracted or not. And available one-touch fold-and-return front seats provide easy access for cargo and friends. With a push of a button, 13 motors and 33 sensors act in seamless unison to turn your coupe into a fun-loving convertible. And they do it in approximately 20 seconds—among the fastest in its class. Only its 0-to-60 time is more impressive.

Optional equipment shown.
See disclosures on page 82.



THE 2013
ISC

MODEL INTROS

COCKPIT

PERFORMANCE

INNOVATION

SPECS

THE 2013
IS LINE



YOUR NEW COMFORT ZONE

For a car that was inspired by competitive racing, the last thing you'd expect would be an indulgent, comfortable cabin. But the IS is full of surprises. Dual-zone climate control is designed to automatically react to changes due to air temperature or sunlight in any of the models—or when the IS C's top is lowered or raised. The climate-control system also uses a humidity sensor and a microdust and pollen filter. In the IS F and IS 350 sedan and convertible, a smog sensor is designed to detect and help block hydrocarbons from entering the cabin.

The seats and steering wheel are carefully thought out as well, and beg for long drives on winding roads. The steering wheel is small in diameter like a race car's and is bound in leather trim for a firm grip. The seats are bolstered to help hold you in place around curves and are also wrapped in leather hand-chosen from premium full-grain stocks. One last detail you'll definitely want to put your hands on: a leather-and-chrome-trimmed shift knob. Putting the IS in gear is now more tempting than ever.



MODEL INTROS

COCKPIT

PERFORMANCE

INNOVATION

SPECS

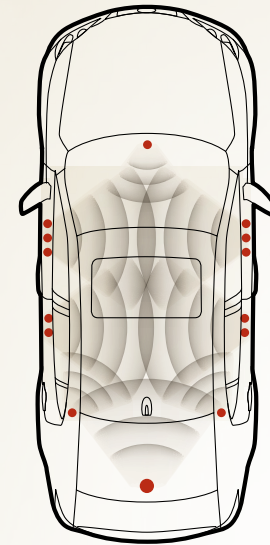
Optional equipment shown.

IT'S A TRUE
PERFORMANCE VEHICLE.
EVEN FROM WITHIN.

THE 2013
IS LINE

Optional equipment shown.
See disclosures on page 82.

IS shown.



To create some of the finest sound possible outside of a recording studio, each IS offers an available Mark Levinson® Premium Surround Sound Audio System.³ For optimum audio quality, the IS has been designed with multiple sound-absorbing materials to help quiet the cabin from unwanted noise. It then delivers rich, clear sound through the carefully arranged speakers. The vehicles are also outfitted to play music from your iPod®⁶ or MP3 player, and every IS offers a standard USB port that allows you to charge and control your iPod®⁶ from the vehicle's audio controls or available Navigation System.⁴ There's also a convenient Bluetooth® audio⁷ wireless connection that's available for compatible devices.

THE 2013
IS LINE

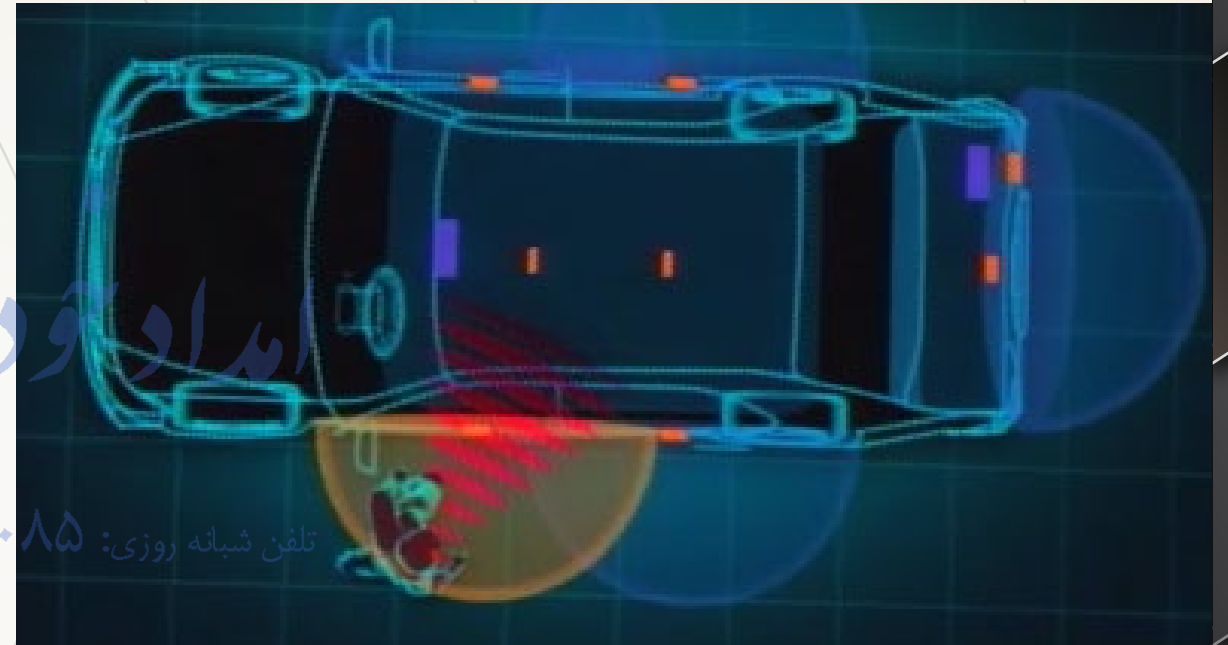


امداد خودرو فارما

تلفن شبانه روزی: ۰۲۱-۸۸۶۲۰۸۵

FarmaSOS.com

EVEN OUTSIDE THE IS,
YOU'RE STILL THE
CENTER OF ATTENTION.



As you approach your IS, SmartAccess^{8,9} automatically transmits a secure signal directly from your key fob, activating the vehicle's lighting sequence and illuminating points of entry—the first being the exterior puddle lights. When your hand touches the door handle, the

door instantly unlocks for quick entry. Once inside, just press the brake pedal with your foot and the IS's ignition button glows green—meaning the engine is primed and ready to growl. No key is needed. With a simple push of the button, you're off.

Optional equipment shown.
See disclosures on page 82.

MODEL INTROS

COCKPIT

PERFORMANCE

INNOVATION

SPECS

THE 2013
IS LINE

OUR ENGINEERS
NEVER SLOW DOWN.
YOU WON'T WANT TO
EITHER.



F PERFORMANCE

IS F
IS F SPORT
F SPORT ACCESSORIES
SHIFTING
HANDLING
BRAKING

INSPIRED by the unforgiving Fuji International Speedway, Lexus F vehicles and accessories offer a range of ways to take the performance and styling of your IS to the next level. Want more of an exclusive look? The IS and IS C F SPORT can provide it, with suspension and steering tuned by the same engineers who worked on the LFA.

For an even more dynamic ride, consider F SPORT Accessories.^{10,11} This selection of track-tested components has been proven to improve both agility and braking times. Finally, there's the IS F, the most aggressive performance sedan Lexus has ever built, providing extraordinary power, nimbleness and aerodynamics.

IS F shown.

Optional equipment shown.
See disclosures on page 82.

MODEL INTROS

COCKPIT

F PERFORMANCE

INNOVATION

SPECS

THE 2013 IS F

BRING ON-RAMPS TO THEIR KNEES.



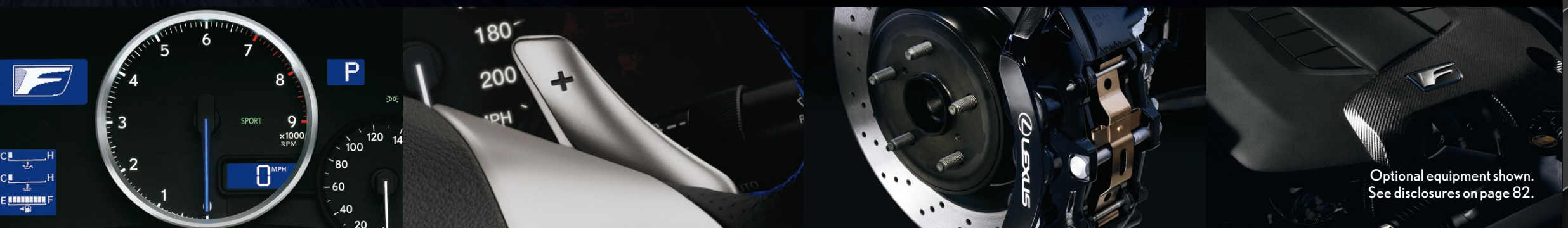
امداد خودرو فارس

With the IS F, we engineered a totally different, asphalt-punishing kind of Lexus. It began with a team of Lexus engineers who put performance and power high on the list. They collaborated with Yamaha®, Brembo® and BBS® to help ensure maximum performance, and the results are definitive. A 5.0-liter V8 generates a massive 416 horsepower,¹ and an eight-speed Sport Direct-Shift transmission

boasts lightning-fast shift timing. It employs both conventional port- and direct-fuel injection and delivers 0-to-60 mph in a searing 4.6 seconds.^{1,2} It even sounds different. Above 3,600 rpm, the engine hungrily sucks in air through a large secondary intake. This unleashes a rush of even more horsepower and creates a deep, attention-grabbing roar from the quad tailpipes.



تلفن شبانه روزی: ۰۸۵ ۸۸۶۲۰۸۵
ParmaSOS.com



Optional equipment shown. See disclosures on page 82.

MODEL INTROS

COCKPIT

PERFORMANCE

INNOVATION

SPECS

SHARPEN YOUR
COMPETITIVE **EDGE.**



IS AND IS C F SPORT

Not all IS sedans are created equal. The IS and IS C F SPORT are designed to enhance the image of each, as well as their performance, with exclusive features inspired by those on the IS F—like a more distinctive grille and suspension tuned by the same team that worked on the Lexus LFA. We've also included one additional feature to help take the edge off: heated front sport seats that are also ventilated on the IS C.



Optional equipment shown.
See disclosures on page 82.

THE 2013
IS

MODEL INTROS

COCKPIT

PERFORMANCE

INNOVATION

SPECS

SHARPEN YOUR
COMPETITIVE EDGE.



IS AND IS C F SPORT

Not all IS sedans are created equal. The IS and IS C F SPORT are designed to enhance the image of each, as well as their performance, with exclusive features inspired by those on the IS F—like a more distinctive grille and suspension tuned by the same team that worked on the Lexus LFA. We've also included one additional feature to help take the edge off: heated front sport seats that are also ventilated on the IS C.



Optional equipment shown.
See disclosures on page 82.

THE 2013
IS

MODEL INTROS

COCKPIT

PERFORMANCE

INNOVATION

SPECS



AUTHENTIC.
TRACK-PROVEN.
EXCLUSIVE.
F SPORT ACCESSORIES^{10,11}

FarmaSOS.com

Along with the other available accessories and options, Lexus offers F SPORT Accessories^{10,11} specifically designed for your IS. Track-proven to improve agility and braking distances, these high-grade components are designed to meet the demands of the true performance enthusiast.



Optional equipment shown.
See disclosures on page 82.

ISC shown.

MODEL INTROS

COCKPIT

PERFORMANCE

INNOVATION

SPECS

THE 2013
IS LINE



Racing-inspired paddle shifters are conveniently located on the steering wheel, allowing you to quickly upshift or downshift with just a flick of the finger.



THE WORLD
OF RACING – RIGHT AT YOUR
FINGERTIPS.



تلفن شبانه روزی: ۰۲۱-۸۸۶۲۰۸۵

FarmaSOS.com

The IS design was inspired by the world of competitive racing, and proof is just an arm's length away. It comes with a six-speed paddle-shift-sequential automatic transmission that benefits from steering-wheel-mounted paddle shifters. Placed right at your fingertips, they allow you to quickly upshift or downshift without taking your hands off the wheel—a feature professional race car drivers appreciate.

MODEL INTROS

COCKPIT

PERFORMANCE

INNOVATION

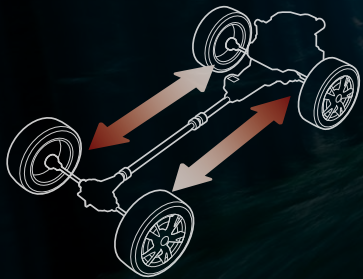
SPECS

Optional equipment shown.
See disclosures on page 82.

IS 250 and 350 shown.

GET TO KNOW THE ROAD. INTIMATELY.

In the battle against the elements, the IS comes armed with several traction-boosting features. The IS 250 and 350 sedans are available with all-wheel drive. When faced with slick road surfaces, AWD varies engine power to both the front and rear axles based on many factors such as steering, throttle position, and wheel and vehicle speed. This can help provide significantly enhanced traction and control. Across the IS Line, all models include Vehicle Dynamics Integrated Management (VDIM).¹⁶ VDIM uses a sophisticated network of sensors to anticipate a skid even before it occurs. When VDIM detects a potential loss of traction, it seamlessly coordinates steering, braking, Vehicle Stability Control (VSC)¹⁶ and Traction Control (TRAC) to help the driver maintain command of the vehicle.



THE 2013
IS LINE

MODEL INTROS

COCKPIT

PERFORMANCE

INNOVATION

SPECS

*IS 350 AWD shown.
Optional equipment shown.
See disclosures on page 82.*

ITS 0 TO 60 GETS YOUR
ATTENTION. BUT ITS 60 TO 0
IS WHAT REALLY
STOPS YOU.

Brembo® produced a special braking system¹⁷ for the IS F that features massive six-piston aluminum calipers that clamp 14.2-inch cross-drilled rotors in front and two-piston calipers with 13.6-inch cross-drilled rotors in the rear. The result: brakes as impressive as the IS F engine. Providing impressive braking in their own right, the IS 350 and IS 350 C employ opposed four-piston front calipers on large rotors to better handle the power of their engines.

IS 350 shown.
Optional equipment shown.
See disclosures on page 82.



MODEL INTROS

COCKPIT

PERFORMANCE

INNOVATION

SPECS

THE 2013
IS LINE

PERFORMANCE SEDAN
OR IDEA LAB?



THE 2013
IS LINE

It's easy to be innovative for innovation's sake. The hard part is making sure drivers directly benefit. Take, for example, our airbag system.¹⁸ It utilizes dual-stage front airbags¹⁸ designed to inflate at different speeds depending on the severity of impact and the driver's seat-track position. Each IS also comes equipped with a twin-chamber front-passenger airbag¹⁸ that deploys with a slight depression in its center to help disperse the forces applied to the passenger. Just another example of how the IS is engineered to focus on you and your passengers.

INNOVATION
SENSES
LEXUS ENFORM®
- WITH SAFETY CONNECT®
NAVIGATION

IS 350 shown.
Optional equipment shown.
See disclosures on page 82.

MODEL INTROS

COCKPIT

PERFORMANCE

INNOVATION

SPECS

THE 2013
IS LINE

A SONAR AND A CAMERA BEHIND.
ALL FOCUSED ON ONE
SINGULAR EXPERIENCE.



Available roof clearance sonar on the IS C monitors the space to the rear of the IS with sensors that automatically prevent roof operation if obstacles are too close. And keeping an eye on things behind the IS is our available backup camera.¹⁹ When the vehicle is placed in reverse, the available NAV screen displays the camera's unique wide-angle view from just above the rear license plate.

IS C shown.
Optional equipment shown.
See disclosures on page 82.

MODEL INTROS

COCKPIT

PERFORMANCE

INNOVATION

SPECS



LEXUS ENFORM®

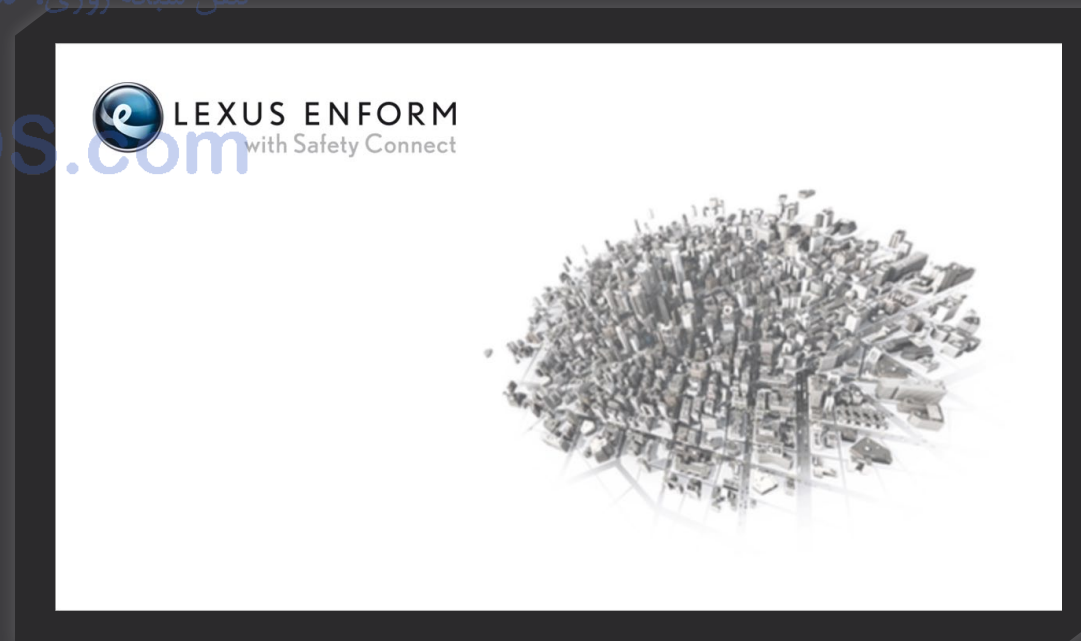
DESIGNED TO HELP
SIMPLIFY YOUR LIFE.

The available Lexus Enform®^{5,6} App Suite®⁷ uses your compatible smartphone to give you in-vehicle access to your favorite mobile applications. You can connect to Bing,TM iHeartRadio, MovieTickets.com, OpenTable,[®] Pandora,[®] Yelp[®] and Facebook Places. And, with wireless updates, new apps will be added as they become available. Need an address? Simply select Destination Assist on the available Navigation System⁴ for live assistance. Once you've decided on a location, your agent can send the turn-by-turn directions straight to your vehicle's Navigation System.⁴ Planning a trip? You also have the option of pre-selecting up to 200 destinations yourself online and having them all sent to your vehicle.

SAFETY CONNECT®

DESIGNED TO HELP
SAFEGUARD YOUR LIFE.

With available Safety Connect,²⁰ you can request emergency help, whether that means assisting the police with locating your stolen vehicle or requesting Enhanced Roadside Assistance²¹ for a flat tire. The Safety Connect²⁰ service (one-year subscription included) also features Automatic Collision Notification, which automatically sends a call for help the moment the system senses the vehicle has been in a severe rear-end collision or the airbags¹⁸ have been deployed.





The IS's available voice-activated Navigation System⁴ is our most advanced to date. It features available Fuel Prices, Sports and Stocks^{4,22} for scores and market updates, as well as available NavTraffic^{TM4,22} that provides real-time traffic reports on specific roads and can reroute you around congestion. It also features available NavWeather^{TM4,22} that can give you real-time weather reports and automatically alert you to severe weather. Meaning you can spend more quality time in your IS with less threat from congested roads and stormy conditions.*

*Be sure to obey traffic regulations and maintain awareness of road and traffic conditions.



THE 2013
IS LINE

MODEL INTROS

COCKPIT

PERFORMANCE

INNOVATION

SPECS

HANDLES CONGESTION
AS DEFTLY AS CURVES.

IS 350 shown.
Optional equipment shown.
See disclosures on page 82.

WE'RE CREATING
INNOVATIONS EVERY DAY.
STAY INFORMED OF THEM EVERY MONTH.

With so much happening at Lexus, it's hard to keep up. That's why we created the Lexus Pursuit newsletter. This monthly e-mail provides subscribers with exclusive information about upcoming model launches and events, as well as news, innovations and offers. Sign up today and stay informed of all things Lexus.



THE 2013
IS
LINE

IS 350 shown.
Optional equipment shown.
See disclosures on page 82.

MODEL INTROS

COCKPIT

PERFORMANCE

INNOVATION

SPECS

THE 2013
IS



IS 350 AWD IS 350 IS 250 AWD IS 250

The racing-inspired IS 250 and IS 350.

3.5-liter 306-horsepower¹ V6 (IS 350). 2.5-liter 204-horsepower¹ V6 (IS 250). Direct injection. Six-speed automatic with sequential-shift paddle shifters. Four-wheel disc brakes. Dual Variable Valve Timing with intelligence (VVT-i). Available F SPORT model with sport-tuned suspension. Rear-wheel drive. Available all-wheel drive. Push-button start. Leather-trimmed interior. Available Mark Levinson[®] Premium Surround Sound Audio System.³ Available backup camera.¹⁹ Dual-zone automatic climate control. Available heated/ventilated front seats.

THE 2013
ISC



IS 350 C IS 250 C

The uninhibited IS Convertible.

Three-piece aluminum retractable hardtop. Available roof clearance sonar. Available one-touch rear-seat access. Side-impact airbags.¹⁸ Highly rigid, convertible-specific reinforced structure. Convertible-optimized steering, suspension, climate and audio systems. Hill-start Assist Control.²³ 3.5-liter 306-horsepower¹ V6 (IS 350 C). 2.5-liter 204-horsepower¹ V6 (IS 250 C). Four-wheel disc brakes. Dual Variable Valve Timing with intelligence (VVT-i). Available F SPORT model with sport-tuned suspension. Rear-wheel drive. Push-button start. Available Mark Levinson[®] Premium Surround Sound Audio System.³ Available backup camera.¹⁹ Available heated and ventilated front seats specific to the IS C.

The imposingly powerful IS F.

V8 engine. 416-horsepower.¹ 371 lb-ft of torque.¹ Titanium intake valves. Eight-speed Sport Direct-Shift transmission. Sequential paddle shifters. Brembo[®] disc brakes.¹⁷ BBS[®] 19-inch forged alloy wheels.¹² Quad tail pipes. Two-stage intake system. Vehicle Dynamics Integrated Management (VDIM)¹⁶ with Sport mode. Available Navigation System.⁴ Available Alcantara[®]-trimmed interior. Available Dynamic Radar Cruise Control.

THE 2013
IS F



Optional equipment shown. See disclosures on page 82.

MODEL INTROS

COCKPIT

PERFORMANCE

INNOVATION

SPECS

IS SEDAN COLOR AND TRIM



INTERIOR COLORS AND TRIM

	Ecru Leather
	Light Gray Leather
	Black Leather
	Espresso Bird's-Eye Maple Wood Trim**
	Dark Gray Bird's-Eye Maple Wood Trim**
	Black Metallic Finish
	Silver Metallic Finish*

Tungsten Pearl	Starfire Pearl	Cerulean Blue Metallic	Ultrasonic Blue Mica*	Matador Red Mica
Deep Sea Mica	Nebula Gray Pearl	Obsidian	Fire Agate Pearl	

COLOR AVAILABILITY

	Ecru Leather	Light Gray Leather	Black Leather
Tungsten Pearl		■	■
Starfire Pearl	■	■	■
Cerulean Blue Metallic	■	■	■
Ultrasonic Blue Mica*			■
Matador Red Mica	■	■	■
Deep Sea Mica	■	■	■
Nebula Gray Pearl	■	■	■
Obsidian	■	■	■
Fire Agate Pearl	■		■
Espresso Bird's-Eye Maple Wood Trim**	■		
Dark Gray Bird's-Eye Maple Wood Trim**		■	■
Black Metallic Finish	■	■	■
Silver Metallic Finish*			■

*F SPORT exclusive **Available

Optional equipment shown.

SHOULDER ROOM
front/rear
54.4/52.7 in (1,381/1,338 mm)

HIP ROOM
front/rear
54.1/53.7 in (1,374/1,365 mm)

HEADROOM
front/rear
37.2/36.7 in (946/932 mm)

HEIGHT
55.7 in (1,415 mm) (RWD)
56.3 in (1,430 mm) (AWD)



WIDTH 70.9 in (1,800 mm)

TRUNK CAPACITY 13.3 cu ft (378 L)

FUEL-TANK CAPACITY 17.2 gal (65 L)

LEG ROOM
front/rear
43.9/30.6 in (1,115/777 mm)



WHEELBASE 107.5 in (2,730 mm)

OVERALL LENGTH 180.3 in (4,580 mm)

IS BODY AND DIMENSIONS

See disclosures on page 82.
Optional equipment shown.

IS WHEEL SELECTION



تلفن شبانه روزی: ۰۲۱-۸۸۶۲۰۸۵

FarmaSOS.com



17-in 10-spoke alloy wheels¹²
STANDARD



18-in five-spoke alloy wheels (RWD)¹² with Liquid Graphite finish
AVAILABLE



18-in split-five-spoke alloy wheels with Dark Graphite finish¹²
AVAILABLE (RWD)



19-in F SPORT^{10,11} full-face forged alloy wheels¹²
AVAILABLE



18-in ISP Mode alloy wheels¹²
AVAILABLE (RWD)



18-in G-Spider alloy wheels¹²
AVAILABLE (RWD)



19-in F SPORT^{10,11} 10-spoke forged alloy wheels¹²
AVAILABLE

MODEL INTROS

COCKPIT

PERFORMANCE

INNOVATION

SPECS

IS SPECIFICATIONS

ENGINE

ENGINE	IS 350 / IS 350 AWD
Type	60° V6, aluminum block and heads, direct and port fuel injection
Displacement	3.5 liters (210 cubic inches)
Valvetrain	Four cam, four valves per cylinder, with dual Variable Valve Timing with intelligence (VVT-i)
Compression Ratio	11.8:1
Horsepower at RPM	306 @ 6,400 ¹
Torque at RPM	277 lb-ft @ 4,800 ¹
Emission Rating	Certified Ultra-Low Emission Vehicle (ULEV II)
ENGINE	IS 250
Type	60° V6, aluminum block and heads, direct fuel injection
Displacement	2.5 liters (152 cubic inches)
Valvetrain	Four cam, four valves per cylinder, with dual Variable Valve Timing with intelligence (VVT-i)
Compression Ratio	12.0:1
Horsepower at RPM	204 @ 6,400 ¹
Torque at RPM	185 lb-ft @ 4,800 ¹
Emission Rating	Certified Ultra-Low Emission Vehicle (ULEV II)

PERFORMANCE

PERFORMANCE	IS 350 / IS 350 AWD	PERFORMANCE	IS 250 RWD
0-60 MPH Acceleration	5.6 seconds ^{1,2}	0-60 MPH Acceleration	7.9 seconds ^{1,2}
Top Track Speed (electronically limited)	144 mph ^{1,2}	Top Track Speed (electronically limited)	140 mph ^{1,2}
EPA Fuel Economy Estimates (city/highway/combined)	19/27/22 mpg ²⁴ (RWD) 18/26/22 mpg ²⁴ (AWD)	EPA Fuel Economy Estimates (city/highway/combined)	21/30/24 mpg ²⁴
Aerodynamic Drag Coefficient	0.28	Aerodynamic Drag Coefficient	0.28
Turning Circle	33.5 ft (RWD) 34.8 ft (AWD)	Turning Circle	33.5 ft
PERFORMANCE	IS 250 AWD	PERFORMANCE	IS 250 AWD
0-60 MPH Acceleration	8.3 seconds ^{1,2}	0-60 MPH Acceleration	8.3 seconds ^{1,2}
Top Track Speed (electronically limited)	131 mph ^{1,2}	Top Track Speed (electronically limited)	131 mph ^{1,2}
EPA Fuel Economy Estimates (city/highway/combined)	21/27/23 mpg ²⁴	EPA Fuel Economy Estimates (city/highway/combined)	21/27/23 mpg ²⁴
Aerodynamic Drag Coefficient	0.28	Aerodynamic Drag Coefficient	0.28
Turning Circle	34.8 ft	Turning Circle	34.8 ft

DRIVETRAIN

DRIVETRAIN	IS 350 RWD
Transmission	Six-speed paddle-shift-sequential automatic Electronically Controlled Transmission with intelligence (ECT-i)
Drive Wheels	Rear-wheel drive
Final Drive Ratio	4.083:1
DRIVETRAIN	IS 350 AWD
Transmission	Six-speed paddle-shift-sequential automatic Electronically Controlled Transmission with intelligence (ECT-i)
Drive Wheels	Full-time all-wheel drive
Final Drive Ratio	4.100:1
DRIVETRAIN	IS 250 RWD
Transmission	Six-speed paddle-shift sequential automatic Electronically Controlled Transmission with intelligence (ECT-i)
Drive Wheels	Rear-wheel drive
Final Drive Ratio	3.909:1
DRIVETRAIN	IS 250 AWD
Transmission	Six-speed paddle-shift sequential automatic Electronically Controlled Transmission with intelligence (ECT-i)
Drive Wheels	Full-time all-wheel drive
Final Drive Ratio	4.100:1

GENERAL

Type	Five-passenger luxury sport sedan
Construction	Welded steel unibody
Curb weight	IS 350 3,527 lb (1,600 kg) IS 350 AWD 3,703 lb (1,656 kg) IS 250 RWD 3,435 lb (1,558 kg) IS 250 AWD 3,651 lb (1,656 kg)

CHASSIS

CHASSIS	IS 350
Suspension (front)	Independent, double-wishbone with coil springs, monotube gas-pressurized shock absorbers and hollow stabilizer bar
Suspension (rear)	Independent, multi-link with coil springs, inverted monotube gas-pressurized shock absorbers and stabilizer bar
Steering	Electronic Power Steering (EPS) system. 2.9 turns lock to lock
Brakes	Four-wheel power-assisted discs, four-sensor, four-channel Anti-lock Braking System (ABS), Electronic Brakeforce Distribution (EBD) and Brake Assist ²⁵
Brake Size	Four-piston front calipers. 13.1-in front, 12.2-in rear ventilated discs
Wheels and Tires	17 x 8.0-in 10-spoke alloy wheels with 225/45VR17 all-season tires ²⁶ front, 245/45VR17 all-season tires rear ²⁶ (RWD) 17 x 8.0-in 10-spoke alloy wheels with 225/45VR17 all-season tires ²⁶ (AWD)

CHASSIS	IS 250
Suspension (front)	Independent, double-wishbone with coil springs, monotube gas-pressurized shock absorbers and hollow stabilizer bar
Suspension (rear)	Independent, multi-link with coil springs, inverted monotube gas-pressurized shock absorbers and stabilizer bar
Steering	Electronic Power Steering (EPS) system. 2.9 turns lock to lock
Brakes	Four-wheel power-assisted discs, four-sensor, four-channel Anti-lock Braking System (ABS), Electronic Brakeforce Distribution (EBD) and Brake Assist ²⁵
Brake Size	Two-piston front calipers. 11.6-in ventilated front, 11.4-in solid rear discs
Wheels and Tires	17 x 8.0-in 10-spoke alloy wheels with 225/45VR17 all-season tires ²⁶ front, 245/45VR17 all-season tires rear ²⁶ (RWD) 17 x 8.0-in 10-spoke alloy wheels with 225/45VR17 all-season tires ²⁶ (AWD)

IS LUXURY FEATURES

LUXURY AND CONVENIENCE

- SmartAccess^{8,9} with push-button Start/Stop
- Dual-zone automatic climate control with interior air filter (IS 250)
- Dual-zone automatic climate control with interior air filter, smog sensor and automatic recirculation mode (IS 350)
- Tilt-and-telescopic steering column
- Power tilt-and-slide moonroof with one-touch open/close and sliding sunshade
- Power windows with one-touch auto open/close
- Remote-linked window and moonroof opening
- Retained accessory power for windows and moonroof
- Electrochromic (auto-dimming) inside rearview mirror
- Power door locks
- Cruise control
- Center console with sliding armrest, storage bin, USB and minijack input and accessory power outlet
- Foldable front-door storage pockets
- HomeLink[®] universal transceiver to operate compatible garage, gate, home lighting and home security systems
- Illuminated entry system
- Dual chrome exhaust outlets
- Trunk pass-through

FarmaSOS.com

SEATING AND TRIM

Black metallic finish interior trim
Leather-trimmed interior
Leather-trimmed steering wheel and shift knob
10-way driver's and front passenger's (including lumbar) power seats
Heated front seats (IS 250 AWD & IS 350 AWD)
Height-adjustable headrests for all seats with foldable rear headrests

COMMUNICATION AND AUDIO

Lexus 13-speaker Premium Sound System with Automatic Sound Levelizer (ASL) and in-dash, single-feed, six-disc CD auto-changer
SiriusXM Satellite Radio^{4,22} Subscription required. 90-day trial subscription included
USB and auxiliary iPod⁶/MP3/Windows Media[®] Audio (WMA) port
Bluetooth[®] technology²⁷
Bluetooth audio⁷ profile for wireless integration of compatible music players with in-vehicle audio system controls

INSTRUMENTATION AND CONTROLS

Steering-wheel-mounted audio, phone and display controls
Electroluminescent instrumentation with start-up sequence
Automatic on/off projector-beam headlamps with 30-second delay
Illuminated interior electronic trunk-lid and fuel-filler door releases
Lexus Personalized Settings (LPS)²⁸ to customize select electronic functions

IS SAFETY AND SECURITY FEATURES

ACTIVE SAFETY

Vehicle Dynamics Integrated Management (VDIM)¹⁶ with cutoff switch
Traction Control (TRAC)
Four-wheel power-assisted disc brakes
Four-sensor, four-channel Anti-lock Braking System (ABS)
Brake Assist²⁵
Electronic Brakeforce Distribution (EBD)
Bi-Xenon[™] High-Intensity Discharge (HID) headlamps with dynamic auto-leveling and LED daytime running lights (IS 350)
Direct Tire Pressure Monitor System²⁹
Water-repellent front-door glass
Daytime running lights
Integrated foglamps
LED taillamps
Variable intermittent windshield wipers with mist cycle
Rear-window defogger with auto-off timer
Power-adjustable outside mirrors with defoggers and puddle lamps; integrated turn indicators
Smart Stop Technology³⁰

PASSIVE SAFETY

Driver's and front passenger's advanced airbag system (SRS)¹⁸ with front passenger's twin-chamber airbag (SRS)¹⁸
Front seat-mounted side airbags (SRS)¹⁸
Front and rear side curtain airbags (SRS)¹⁸
Driver's and front passenger's knee airbags (SRS)¹⁸
Three-point seatbelts for all seating positions, pre-tensioners with force limiters for front and outboard rear seats
Automatic Locking Retractor/Emergency Locking Retractor (ALR/ELR) seatbelts for all passenger seating positions.
Emergency Locking Retractor (ELR) only for driver's seat
Height-adjustable front shoulder belt anchors
Child Restraint Seat (CRS) tether anchor brackets for rear outboard seating positions
Highly rigid body structure with front and rear crumple zones
Side-impact door beams
Reinforcements in pillars
Impact-dissipating upper interior trim
Collapsible steering column

SECURITY

Safety Connect^{®20} offers Automatic Collision Notification, Stolen Vehicle Location, an Emergency Assistance Button (SOS) and Enhanced Roadside Assistance²¹ connectivity. Subscription required. One-year trial subscription included
Vehicle theft-deterrent and engine immobilizer system⁹
Tool kit
First aid kit
Emergency interior trunk release

ISC COLOR AND TRIM



INTERIOR COLORS AND TRIM



COLOR AVAILABILITY	Black Leather	Alabaster Leather	Light Gray Leather*	Saddle Leather*	Red Leather*
Silver Lining Metallic	■	■	■	■	
Starfire Pearl	■	■	■	■	
Deep Sea Mica	■	■	■	■	
Matador Red Mica	■	■	■		
Nebula Gray Pearl	■	■	■	■	
Obsidian	■	■	■	■	
Ultrasonic Blue Mica†	■				
Ultra White†	■				
Dark Gray Bird's-Eye Maple Wood Trim*	■		■		■
Espresso Bird's-Eye Maple Wood Trim*		■		■	
Black Metallic Finish	■	■			
Silver Metallic Finish†	■				

*Available †F SPORT exclusive

Optional equipment shown.

FarmaSOS.com

تلفن شبانه روزی: ۰۲۱-۸۸۶۲۰۸۵

SHOULDER ROOM
front/rear
54.2/44.7 in (1,378/1,136 mm)

HIP ROOM
front/rear
54.3/43.3 in (1,378/1,101 mm)

HEADROOM
front/rear
38.3/36.1 in (973/918 mm)

HEIGHT
55.7 in (1,415 mm)

WIDTH 70.9 in (1,800 mm)



LEG ROOM
front/rear
44.1/25.9 in (1,121/658 mm)

FUEL-TANK CAPACITY 17.2 gal (65 L)

TRUNK CAPACITY
10.8 cu ft (306 L, top up)



WHEELBASE 107.5 in (2,730 mm)

OVERALL LENGTH 182.5 in (4,635 mm)

ISC BODY AND DIMENSIONS

See disclosures on page 82.
Optional equipment shown.

ISC WHEEL SELECTION



17-in 10-spoke alloy wheels²⁶
STANDARD



18-in five-spoke alloy wheels¹²
with Liquid Graphite finish
AVAILABLE



18-in split-five-spoke alloy wheels
with Dark Graphite finish¹²
AVAILABLE



18-in split-five-spoke
alloy wheels¹²
AVAILABLE



19-in F SPORT^{10,11}
full-face forged alloy wheels¹²
AVAILABLE



18-in ISP Mode alloy wheels¹²
AVAILABLE



18-in G-Spider alloy wheels¹²
AVAILABLE



19-in F SPORT^{10,11}
10-spoke forged alloy wheels¹²
AVAILABLE

MODEL INTROS

COCKPIT

PERFORMANCE

INNOVATION

SPECS

IS C SPECIFICATIONS

ENGINE

ENGINE	IS 350 C
Type	60° V6, aluminum block and heads, direct and port fuel injection
Displacement	3.5 liters (210 cubic inches)
Valvetrain	Four cam, four valves per cylinder, with dual Variable Valve Timing with intelligence (VVT-i)
Compression Ratio	11.8:1
Horsepower at RPM	306 @ 6,400 ¹
Torque at RPM	277 lb-ft @ 4,800 ¹
Emission Rating	Certified Ultra-Low Emission Vehicle (ULEV II)

ENGINE	IS 250 C
Type	60° V6, aluminum block and heads, direct fuel injection
Displacement	2.5 liters (152 cubic inches)
Valvetrain	Four cam, four valves per cylinder, with dual Variable Valve Timing with intelligence (VVT-i)
Compression Ratio	12.0:1
Horsepower at RPM	204 @ 6,400 ¹
Torque at RPM	185 lb-ft @ 4,800 ¹
Emission Rating	Certified Ultra-Low Emission Vehicle (ULEV II)

PERFORMANCE

PERFORMANCE	IS 350 C
0-60 MPH Acceleration	5.8 seconds ^{1,2}
Top Track Speed (electronically limited)	141 mph ^{1,2}
EPA Fuel Economy Estimates (city/highway/combined)	19/27/22 mpg ²⁴
Aerodynamic Drag Coefficient	0.29
Turning Circle	33.5 ft

PERFORMANCE	IS 250 C
0-60 MPH Acceleration	8.4 seconds ^{1,2}
Top Track Speed (electronically limited)	131 mph ^{1,2}
EPA Fuel Economy Estimates (city/highway/combined)	21/30/24 mpg ²⁴
Aerodynamic Drag Coefficient	0.29
Turning Circle	33.5 ft

DRIVETRAIN

DRIVETRAIN	IS 350 C
Transmission	Six-speed paddle-shift-sequential automatic Electronically Controlled Transmission with intelligence (ECT-i)
Drive Wheels	Rear-wheel drive
Final Drive Ratio	4.083:1

DRIVETRAIN	IS 250 C
Transmission	Six-speed paddle-shift-sequential automatic Electronically Controlled Transmission with intelligence (ECT-i)
Drive Wheels	Rear-wheel drive
Final Drive Ratio	3.909:1

GENERAL

Type	Four-passenger retractable hardtop luxury sport convertible coupe
Construction	Welded steel unibody
Curb weight	IS 350 C 3,880 lb (1,760 kg) IS 250 C 3,836 lb (1,726 kg)

ایراد خودرو فارما
تلفن شبانه روزی: ۰۲۱-۸۸۶۲۰۸۵

FarmaSOS.com

CHASSIS

CHASSIS	IS 350 C
Suspension (front)	Independent, double-wishbone with coil springs, monotube gas-pressurized shock absorbers and hollow stabilizer bar
Suspension (rear)	Independent, multi-link with coil springs, inverted monotube gas-pressurized shock absorbers and stabilizer bar
Steering	Electronic Power Steering (EPS) system. 3.2 turns lock to lock
Brakes	Four-wheel power-assisted discs, four-sensor, four-channel Anti-lock Braking System (ABS), Electronic Brakeforce Distribution (EBD) and Brake Assist ²⁵
Brake Size	Four-piston front calipers. 13.1-in front, 12.2-in rear ventilated discs
Wheels and Tires	17 x 8.0-in 10-spoke alloy wheels with 225/45VR17 all-season tires ²⁶ front, 245/45VR17 all-season tires ²⁶ rear

CHASSIS	IS 250 C
Suspension (front)	Independent, double-wishbone with coil springs, monotube gas-pressurized shock absorbers and hollow stabilizer bar
Suspension (rear)	Independent, multi-link with coil springs, inverted monotube gas-pressurized shock absorbers and stabilizer bar
Steering	Electronic Power Steering (EPS) system. 3.2 turns lock to lock
Brakes	Four-wheel power-assisted discs, four-sensor, four-channel Anti-lock Braking System (ABS), Electronic Brakeforce Distribution (EBD) and Brake Assist ²⁵
Wheels and Tires	Two-piston front calipers. 11.6-in front, 12.2-in rear ventilated discs 17 x 8.0-in 10-spoke alloy wheels with 225/45VR17 all-season tires ²⁶ front, 245/45VR17 all-season tires ²⁶ rear

IS C LUXURY FEATURES

LUXURY AND CONVENIENCE

- SmartAccess^{8,9} with push-button Start/Stop
- Dual-zone automatic climate control with interior air filter (IS 250 C)
- Dual-zone automatic climate control with interior air filter, smog sensor and automatic recirculation mode (IS 350 C)
- Power tilt-and-telescopic steering column
- Power-retractable folding hardtop
- Power windows with front one-touch auto open/close
- Remote-linked window opening
- Retained accessory power for windows
- Electrochromic (auto-dimming) inside rearview mirror
- Power door locks
- Cruise control
- Center console with sliding armrest, storage bin, USB and minijack input, and accessory power outlet
- Front-door storage pockets
- HomeLink[®] universal transceiver to operate compatible garage, gate, home lighting and home security systems
- Illuminated entry system
- Dual chrome exhaust outlets

تلفن شبانه روزی: ۰۲۱-۸۸۸۶۲۰۸۵

FarmaSOS.com

SEATING AND TRIM

Black metallic finish interior trim
Leather-trimmed interior
Leather-trimmed steering wheel and shift knob
10-way driver's and front passenger's (including lumbar) power seats
Easy-entry power front-passenger seat slide
Height-adjustable front headrests and remote-foldable rear headrests

COMMUNICATION AND AUDIO

Lexus eight-speaker Premium Sound System with Automatic Sound Levelizer (ASL) and in-dash, single-feed, six-disc CD auto-changer
SiriusXM Satellite Radio^{4,22} Subscription required. 90-day trial subscription included
USB and auxiliary iPod⁶/MP3/Windows Media[®] Audio (WMA) port
Bluetooth[®] technology²⁷
Bluetooth audio⁷ profile for wireless integration of compatible music players with in-vehicle audio system controls

INSTRUMENTATION AND CONTROLS

Steering-wheel-mounted audio, phone and display controls
Electroluminescent instrumentation with startup sequence
Automatic on/off projector-beam headlamps
Illuminated interior electronic trunk-lid and fuel-filler door releases
Lexus Personalized Settings (LPS)²⁸ to customize select electronic functions

IS C SAFETY AND SECURITY FEATURES

ACTIVE SAFETY

Vehicle Dynamics Integrated Management (VDIM)¹⁶ with cutoff switch
Traction Control (TRAC)
Four-wheel power-assisted disc brakes
Four-sensor, four-channel Anti-lock Braking System (ABS)
Brake Assist²⁵
Electronic Brakeforce Distribution (EBD)
Direct Tire Pressure Monitor System²⁹
Water-repellent front-door glass
Daytime running lights
Integrated foglamps
LED taillamps
Variable intermittent windshield wipers with mist cycle
Rear-window defogger with auto-off timer
Power-adjustable outside mirrors with defoggers and puddle lamps; integrated turn indicators
Smart Stop Technology³⁰

PASSIVE SAFETY

Driver's and front passenger's advanced airbag system (SRS)¹⁸ with front passenger's twin-chamber airbag (SRS)¹⁸
Front seat-mounted side airbags (SRS),¹⁸ enlarged for head and torso protection
Driver's and front passenger's knee airbags (SRS)¹⁸
Three-point seatbelts for all seating positions, pre-tensioners with force limiters for front seats
Automatic Locking Retractor/Emergency Locking Retractor (ALR/ELR) seatbelts for all passenger seating positions. Emergency Locking Retractor (ELR) only for driver's seat
Child Restraint Seat (CRS) tether anchor brackets for rear seating positions
Highly rigid body structure with front and rear crumple zones
Side-impact door beams
Reinforcements in pillars, rocker panels, rear body and doors
Impact-dissipating upper interior trim
Collapsible steering column

SECURITY

Safety Connect^{®20} offers Automatic Collision Notification, Stolen Vehicle Location, an Emergency Assistance Button (SOS) and Enhanced Roadside Assistance²¹ connectivity. Subscription required. One-year trial subscription included
Vehicle theft-deterrent and engine-immobilizer system⁹
Emergency interior trunk release
Tool kit
First aid kit

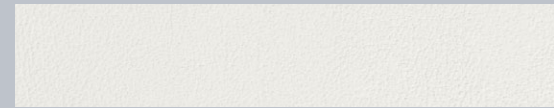
IS F COLOR AND TRIM



INTERIOR COLORS AND TRIM



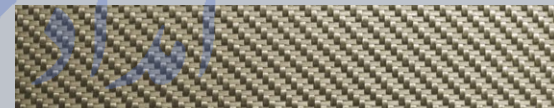
Black Leather



Alpine Leather



Red Leather



Dark Aluminized Composite Trim

COLOR AVAILABILITY

	Black Leather	Alpine Leather	Red Leather
Liquid Platinum	■	■	■
Ultra White	■	■	■
Matador Red Mica	■	■	■
Ultrasonic Blue Mica	■	■	■
Nebula Gray Pearl	■	■	■
Obsidian	■	■	■
Dark Aluminized Composite Trim	■	■	■

IS F WHEEL

SHOULDER ROOM
front/rear
54.4/52.7 in (1,381/1,338 mm)

HIP ROOM
front/rear
54.1/53.7 in (1,374/1,364 mm)

HEADROOM
front/rear
37.2/36.7 in (946/932 mm)

HEIGHT
55.7 in (1,415 mm)

WIDTH 71.5 in (1,815 mm)



TRUNK CAPACITY 13.3 cu ft (377 L)

FUEL-TANK CAPACITY 16.9 gal (64 L)

LEG ROOM
front/rear
43.9/30.6 in (1,115/777 mm)

WHEELBASE 107.4 in (2,730 mm)

OVERALL LENGTH 183.4 in (4,660 mm)



19-in forged alloy wheels¹²
manufactured by BBS®

IS F BODY AND DIMENSIONS

See disclosures on page 82.

MODEL INTROS

COCKPIT

PERFORMANCE

INNOVATION

SPECS

IS F SPECIFICATIONS

ENGINE

Type	90° V8, aluminum block and heads, direct and port fuel injection
Displacement	5.0 liters (303 cubic inches)
Valvetrain	Four cam, four valves per cylinder, with dual Variable Valve Timing with intelligence and Electronic intake valve timing (VVT-iE)
Compression Ratio	11.8:1
Horsepower at RPM	416 hp @ 6,600 ¹
Torque at RPM	371 lb-ft @ 5,200 ¹
Emission Rating	Certified Ultra-Low Emission Vehicle (ULEV II)

PERFORMANCE

0-60 MPH Acceleration	4.6 seconds ^{1,2}
Top Track Speed (electronically limited)	170 mph ^{1,2}
EPA Fuel Economy Estimates (city/highway/combined)	16/23/18 mpg ²⁴
Aerodynamic Drag Coefficient	0.30
Turning Circle	33.5 ft

DRIVETRAIN

Transmission	Eight-speed Sport Direct-Shift automatic transmission with paddle shifters, Manual mode and torque converter lock-up for gears 2-8
Drive Wheels	Rear-wheel drive
Rear Differential	TORSEN® torque-sensing limited-slip ³¹

GENERAL

Type	Four-passenger high-performance luxury sport sedan
Construction	Welded steel unibody
Curb weight	3,780 lb (1,715 kg)

امداد خودرو فارما

تلفن شبانه روزی: ۰۲۱-۸۸۸۶۲۰۸۵

FarmaSOS.com

CHASSIS

Suspension (front)	Independent, double-wishbone with high-mount upper arms, coil springs, monotube gas-pressurized shock absorbers and hollow stabilizer bar
Suspension (rear)	Independent, multi-link with low-mount upper arms, coil springs, monotube gas-pressurized shock absorbers and stabilizer bar
Steering	Electronic Power Steering (EPS), vehicle speed-sensing coaxial rack and pinion, 2.9 turns, lock to lock
Brakes	Four-wheel power-assisted discs manufactured by Brembo, ^{®17} with four-sensor, four-channel Anti-lock Braking System (ABS), Electronic Brakeforce Distribution (EBD) and Brake Assist ²⁵ 14.2-in drilled and ventilated front discs with six-piston-opposed aluminum calipers and high-friction brake pads, ¹⁷ 13.6-in drilled and ventilated rear discs with two-piston-opposed aluminum calipers and high-friction brake pads ¹⁷
Wheels and Tires (front)	19 x 8.5-in forged aluminum-alloy wheels manufactured by BBS [®] with 225/40YR19 summer tires ¹²
Wheels and Tires (rear)	19 x 9.5-in forged aluminum-alloy wheels manufactured by BBS [®] with 255/35YR19 summer tires ¹²

IS F LUXURY FEATURES

LUXURY AND CONVENIENCE

- SmartAccess^{8,9} with push-button Start/Stop
- Dual-zone automatic climate control with interior air filter and smog sensor and automatic recirculation mode
- Power tilt-and-telescopic steering column
- Lexus Memory System to control power driver's and front passenger's seat (except lumbar), outside mirrors and steering wheel
- Power tilt-and-slide moonroof with one-touch open/close and sliding sunshade
- Power windows with one-touch auto open/close
- Remote-linked window and moonroof opening (if equipped)
- Retained accessory power for windows and moonroof (if equipped)
- Power door locks
- Electrochromic (auto-dimming) inside rearview mirror and outside mirrors
- Cruise control
- Center console with sliding armrest, storage bin, USB and minijack input, and accessory power outlet
- Foldable front-door storage pockets
- HomeLink[®] universal transceiver to operate compatible garage, gate, home lighting and home security systems
- Lexus Personalized Settings (LPS)²⁸ to customize select electronic functions
- Illuminated entry system
- Rear spoiler
- Quad chrome exhaust outlets
- Trunk pass-through

ایراد خودرو فارما

تلفن شبانه روزی: ۰۲۱-۸۸۸۶۲۰۸۵

FarmaSOS.com

SEATING AND TRIM

Hand-finished dark aluminized composite interior trim
Perforated leather-trimmed interior
Perforated leather-trimmed steering wheel with "F" logo
Perforated leather-trimmed and chrome shift knob
Aluminum sport pedals
10-way driver's and front passenger's (including lumbar) power sport-bolstered seats
Heated front seats
Height-adjustable headrests for all seats
Foldable rear headrests

COMMUNICATION AND AUDIO

Lexus 13-speaker, Premium Sound System with Automatic Sound Levelizer (ASL) and in-dash, single-feed, six-disc CD auto-changer
SiriusXM Satellite Radio^{4,22} Subscription required. 90-day trial subscription included
USB and Auxiliary iPod^{®6}/MP3/Windows Media[®] Audio (WMA) port
In-glass antenna with FM-diversity system
Bluetooth[®] technology²⁷
Bluetooth audio⁷ profile for wireless integration of compatible music players with in-vehicle audio system controls

INSTRUMENTATION AND CONTROLS

Steering-wheel-mounted audio, phone and display controls
Steering-wheel-mounted sport switch
Electroluminescent instrumentation with startup sequence
Digital speedometer
Automatic on/off projector-beam headlamps with 30-second delay
Illuminated interior electronic trunk-lid and fuel-filler door releases
Lexus Personalized Settings (LPS)²⁸ to customize select electronic functions

IS F SAFETY AND SECURITY FEATURES

ACTIVE SAFETY

Vehicle Dynamics Integrated Management (VDIM)¹⁶ with Sport mode and cutoff switch
Traction Control (TRAC)
Four-wheel power-assisted disc brakes manufactured by Brembo^{®17}
Four-sensor, four-channel Anti-lock Braking System (ABS)
Brake Assist²⁵
Electronic Brakeforce Distribution (EBD)
Bi-Xenon[™] High-Intensity Discharge (HID) headlamps with dynamic auto-leveling and LED daytime running lights
Direct Tire Pressure Monitor System²⁹
Water-repellent front-door glass
Daytime running lights
Integrated foglamps
LED taillamps
Variable intermittent windshield wipers with mist cycle
Rear-window defogger with auto-off timer
Power-adjustable outside mirrors with defoggers and puddle lamps; integrated turn indicators
Smart Stop Technology³⁰

PASSIVE SAFETY

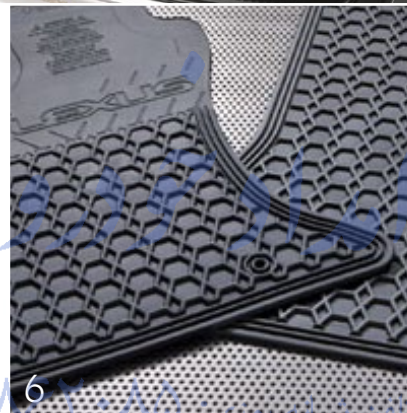
Driver's and front passenger's advanced airbag system (SRS)¹⁸ with front passenger's twin-chamber airbag (SRS)¹⁸
Front seat-mounted side airbags (SRS)¹⁸
Front and rear side curtain airbags (SRS)¹⁸
Driver's and front passenger's knee airbags (SRS)¹⁸
Three-point seatbelts for all seating positions, pre-tensioners with force limiters for front and outboard rear seats
Automatic Locking Retractor/Emergency Locking Retractor (ALR/ELR) seatbelts for all passenger seating positions. Emergency Locking Retractor (ELR) only for driver's seat
Height-adjustable front shoulder belt anchors
Child Restraint Seat (CRS) tether anchor brackets for rear outboard seating positions
Highly rigid body structure with front and rear crumple zones
Side-impact door beams
Reinforcements in pillars
Impact-dissipating upper interior trim
Collapsible steering column

SECURITY

Safety Connect^{®20} offers Automatic Collision Notification, Stolen Vehicle Location, an Emergency Assistance Button (SOS) and Enhanced Roadside Assistance²¹ connectivity. Subscription required. One-year trial subscription included
Vehicle theft-deterrent and engine immobilizer system⁹
Tool kit
First aid kit
Emergency interior trunk release

ACCESSORIES*

- 1 First aid kit
- 2 Carpet trunk mat
- 3 18-in G-Spider alloy wheels (IS RWD and IS C only)¹²
- 4 Cargo net
- 5 Car cover
- 6 All-weather floor mats (IS and IS C only)¹³
- 7 Wind screen (ISC only)
- 8 Paint protection film³²
- 9 Alloy wheel locks
- 10 Rear spoiler (IS only)
- 11 18-in ISP Mode alloy wheels (IS RWD and IS C only)¹²
- 12 Rear bumper appliqué
- 13 Door edge guards (IS only, image not shown)
- 14 Key glove (image not shown)



MODEL INTROS

COCKPIT

PERFORMANCE

INNOVATION

SPECS

*Please see page 82 for more information regarding options/accessories/packages.

See disclosures on page 82. Optional equipment shown.

OPTION PACKAGES*

IS PACKAGES

NAVIGATION SYSTEM

Navigation System⁴ including voice command and Enhanced *Bluetooth*[®] technology,²⁷ NavTraffic,^{TM4,22} NavWeather,^{TM4,22} Fuel Prices, Sports and Stocks from SiriusXM.^{4,22} Subscription required. One-year trial subscription included

Lexus Enform[®] Application Suite⁵ with Bing,TM iHeartRadio, MovieTickets.com, OpenTable,[®] Pandora, Yelp[®] and Facebook Places. Subscription required. One-year trial subscription included

Lexus Enform⁵ offers Destination Assist and eDestination

NAVIGATION SYSTEM/MARK LEVINSON PREMIUM AUDIO SYSTEM PACKAGE

Includes all Navigation System contents plus:

Mark Levinson[®] 14-speaker 300-watt @ less than 0.1% THD, 20-20,000 Hz³³ Premium Surround Sound Audio System³ with 7.1-channel architecture and DVD/CD player

PREMIUM PACKAGE

Espresso or dark gray bird's-eye maple interior trim

Perforated leather-trimmed interior with heated and ventilated front seats

LUXURY PACKAGE

Power tilt-and-telescopic steering column

Lexus Memory System to control power driver's seat (except lumbar), outside mirrors and steering wheel

Electrochromic (auto-dimming) outside mirrors with auto tilt-down in reverse

Illuminated door-sill scuff plates

Espresso or dark gray bird's-eye maple interior trim

Perforated semi-aniline leather-trimmed interior with heated and ventilated front seats

Power rear sunshade

Bi-XenonTM High-Intensity Discharge (HID) headlamps with LED daytime running lights (IS 250)

Rain-sensing intermittent windshield wipers with mist cycle

LUXURY PACKAGE WITH 18-IN WHEELS (RWD ONLY)

Includes all Luxury Package contents plus:

18-in five-spoke alloy wheels with all-season tires¹²

IS F SPORT (RWD ONLY)

18-inch split-five-spoke alloy wheels with Dark Graphite finish and summer or all-season tires¹²

F SPORT suspension and EPS tuning

Front lip spoiler, upper and lower grille inserts, and rear spoiler

F SPORT front seats, steering wheel, shift knob, front fender badges, silver metallic finish interior trim, aluminum pedals and door-sill scuff plates

Heated front seats with microfiber inserts for front and rear seats

F SPORT ACCESSORIES^{10,11}

For information on F SPORT Accessories,^{10,11} see your Lexus dealer or visit lexus.com/IS/fsportaccessories

IS F PACKAGES

NAVIGATION SYSTEM

Navigation System⁴ including voice command and Enhanced *Bluetooth*[®] technology,²⁷ NavTraffic,^{TM4,22} NavWeather,^{TM4,22} Fuel Prices, Sports and Stocks from SiriusXM.^{4,22} Subscription required. One-year trial subscription included

Lexus Enform Application Suite⁵ with Bing, iHeartRadio, MovieTickets.com, OpenTable, Pandora, Yelp and Facebook Places. Subscription required. One-year trial subscription included

Lexus Enform⁵ offers Destination Assist and eDestination

NAVIGATION SYSTEM/MARK LEVINSON PREMIUM AUDIO SYSTEM PACKAGE

Includes all Navigation System contents plus:

Mark Levinson 14-speaker 300-watt @ less than 0.1% THD, 20-20,000 Hz³³ Premium Surround Sound Audio System³ with 7.1-channel architecture and in-dash, single-feed, six-disc DVD/CD auto-changer

IS C PACKAGES

NAVIGATION SYSTEM

Navigation System⁴ including voice command and Enhanced *Bluetooth*[®] technology,²⁷ NavTraffic,^{TM4,22} NavWeather,^{TM4,22} Fuel Prices, Sports and Stocks from SiriusXM.^{4,22} Subscription required. One-year trial subscription included

Lexus Enform Application Suite⁵ with Bing, iHeartRadio, MovieTickets.com, OpenTable, Pandora, Yelp and Facebook Places. Subscription required. One-year trial subscription included

Lexus Enform⁵ offers Destination Assist and eDestination

NAVIGATION SYSTEM/MARK LEVINSON PREMIUM AUDIO SYSTEM PACKAGE

Includes all Navigation System contents plus:

Mark Levinson 12-speaker 270-watt @ less than 0.1% THD, 20-20,000 Hz³³ Premium Surround Sound Audio System³ with 5.1-channel architecture and DVD/CD player

LUXURY PACKAGE

Heated and ventilated front seats with perforated semi-aniline leather trim

Lexus Memory System to control power driver's and front passenger's seats (except lumbar), outside mirrors and steering wheel

Rain-sensing intermittent windshield wipers with mist cycle
Electrochromic (auto-dimming) outside mirrors with auto tilt-down in reverse

Espresso or dark gray bird's-eye maple interior trim

Bi-Xenon High-Intensity Discharge (HID) headlamps with LED daytime running lights

Illuminated door-sill scuff plates

One-touch power slide/fold/return front seats

IS C F SPORT

18-inch split-five-spoke wheels with Dark Graphite finish and all-season or summer tires²

F SPORT suspension and Electronic Power Steering (EPS) tuning

Front lip spoiler, upper and lower grille inserts

Bolstered, heated and ventilated front seats with F SPORT stitching

F SPORT steering wheel, shift knob, front fender badge, silver metallic interior trim, and aluminum pedals and door-sill scuff plates

Black headliner

F SPORT ACCESSORIES^{11,12}

For information on F SPORT Accessories,^{10,11} see your Lexus dealer or visit lexus.com/IS/fsportaccessories

OPTIONS*

IS, IS C AND IS F

Intuitive Parking Assist

Headlamp washers (IS 250 AWD, IS 350, IS 350 C, IS 250 C, IS F)

IS

Bi-XenonTM High-Intensity Discharge (HID) headlamps and LED daytime running lights with dynamic auto-leveling (IS 250)

Rear spoiler

18-in five-spoke alloy wheels with Liquid Graphite finish and all-season or summer tires¹²

IS C

Bi-Xenon High-Intensity Discharge (HID) headlamps and LED daytime running lights with dynamic auto-leveling

Heated and ventilated front seats with perforated leather trim and dark gray bird's-eye maple interior trim

18-in five-spoke alloy wheels with all-season tires¹²

18-in split-five-spoke alloy wheels with all-season tires¹²

Pre-Collision System (PCS)³⁴ and Dynamic Radar Cruise Control

Wind screen

IS F

Pre-Collision System (PCS)³⁴ and Dynamic Radar Cruise Control

*Please see page 82 for more information regarding options/accessories/packages.

See disclosures on page 82.

WARRANTY

Four-year/50,000-mile Lexus Limited Warranty. Six-year/70,000-mile Powertrain Warranty. Six-year/unlimited-mileage Corrosion Perforation Warranty. All warranties with zero deductible. See the IS, IS-C or IS-F *Warranty and Services Guides* at your Lexus dealer for details.

1. Ratings achieved using the required premium unleaded gasoline with an octane rating of 91 or higher. If premium fuel is not used, performance will decrease. **2.** Performance figures are for comparison only and were obtained with prototype vehicles by professional drivers using special safety equipment and procedures. Do not attempt. **3.** Mark Levinson® is a registered trademark of Harman International Industries, Inc. **4.** Availability and accuracy of the information provided by the Navigation System or any SiriusXM services mentioned (if installed) are dependent upon many factors. Use common sense when relying on information provided. Services not available in every city or roadway. Periodic Navigation updates available at additional cost. See *Navigation System Owner's Manual* or contact SiriusXM for details. **5.** Always drive safely, obey traffic laws & focus on the road while driving. Apps/services vary by phone/carrier; functionality depends on many factors. Select apps use large amounts of data, you are responsible for charges. Apps/services are subject to change. Apps identified by ™ or ® are trademarks or registered trademarks of their respective companies. For enrollment, cost and more details, see lexus.com/enform. **6.** iPod® is a registered trademark of Apple Inc. All rights reserved. **7.** Bluetooth® audio device must be enabled with A2DP and AVRCP. **8.** The SmartAccess system may interfere with some pacemakers or cardiac defibrillators. If you have one of these medical devices, please talk to your doctor to see if you should deactivate this system. **9.** The engine immobilizer is a state-of-the-art anti-theft system. When you insert your key into the ignition switch or bring a SmartAccess fob into the vehicle, the key transmits an electronic code to the vehicle. The engine will only start if the code in the transponder chip inside the key or SmartAccess fob matches the code in the vehicle's immobilizer. Because the transponder chip is embedded in the key or SmartAccess fob, it can be costly to replace. If you lose a key or SmartAccess fob, your Lexus dealer can help. Alternatively, you can find a qualified independent locksmith to perform high-security key services by consulting your local Yellow Pages or by contacting www.aloa.org. **10.** FSPORT Accessories are warranted for 12 months from the date of installation or for the balance of the new-car or Certified Pre-Owned (CPO) warranty in force at the date of installation, whichever is greater, when installed by an authorized Lexus dealer. FSPORT Accessories installed by anyone other than an authorized Lexus dealer are warranted for 12 months from the date of purchase only, and the warranty coverage is limited to the replacement value of the FSPORT Accessories. These warranties do not cover maintenance services such as replacement of brake pads/linings and clutch linings; or noise, vibration, cosmetic conditions and other deterioration caused by normal wear and tear. Part failure caused by improper installation by anyone other than an authorized Lexus dealer may void the FSPORT Accessories warranty, the new-vehicle warranty or both. **11.** FSPORT is a trademark of Toyota Motor Corporation. All information presented herein is based on data available at time of printing and is subject to change without notice. FSPORT Accessories are available exclusively through participating Lexus dealers. See dealers for more detailed information. **12.** 18- or 19-in performance tires are expected to experience greater tire wear than conventional tires. Tire life may be substantially less than 15,000 miles, depending upon driving conditions. **13.** To avoid potential interference with pedal operation, do not install a floor mat on top of an existing floor mat, and each mat must be secured with either quarter-turn fasteners or retention hooks (clips). This floor mat was designed specifically for use in this model and model year vehicle and SHOULD NOT be used in any other vehicle. **14.** With either the front- or rear-brake upgrade, the compact spare tire cannot be used. In the event of a flat, the tire must be repaired or replaced. Brake upgrades will fit 18-in factory option wheels, 18-in Genuine Lexus Accessory wheels or 18-in or 19-in FSPORT wheels only. **15.** The FSPORT Performance Air Intake is to be sold as a dealer-installed or over-the-counter option after the retail sale of the vehicle. The Performance Air Intake may not be sold to the customer at the same time as the new vehicle and may not be financed together with the new vehicle. Please see the FSPORT catalog, visit www.lexus.com/fsport or call 1-800-423-1680 for a complete list of FSPORT products and warranty information. Emission-legal for aftermarket sale via C.A.R.B. Executive Order. **16.** Vehicle Stability Control (VSC) and Vehicle Dynamics Integrated Management (VDIM) are electronic systems designed to help the driver maintain control under adverse conditions. They are not substitutes for safe driving practices. Factors including speed, road conditions and driver steering input can all affect whether VSC and VDIM will be effective in preventing a loss of control. See *Owner's Manual* for details. **17.** High-friction brakes require periodic inspection and measurement as outlined in the *Warranty and Services Guide*. The pads and rotors are expected to experience greater wear than conventional brakes. Pad life may be less than 20,000 miles, and brake rotor life may be less than 50,000 miles depending on driving conditions. **18.** All the airbag (AB) systems are Supplemental Restraint Systems. All ABs (if installed) are designed to inflate only under certain conditions and in certain types of severe collisions: frontal and knee ABs typically inflate in frontal collisions; side and side curtain ABs in side collisions; Roll-Sensing Curtain ABs at a severe tilt degree, roll or lateral G-force. In all other accidents, the ABs will not inflate. To decrease the risk of injury from an inflating AB, always wear seatbelts, sit upright in the middle of the seat as far back as possible and do not lean against the door. Do not put objects in front of an AB or around the seatback. Do not use a rearward-facing child seat in any front passenger seat. The force of an inflating AB may cause serious injury or death. See *Owner's Manual* for further information/warnings. **19.** The backup camera does not provide a comprehensive view of the rear area of the vehicle. You should also look around outside your vehicle and use your mirrors to confirm rearward clearance. Cold weather will limit effectiveness and view may become cloudy. **20.** Contact with the response center may not be available in all areas. Service Agreements required. A variety of subscription terms available; charges will vary. See lexus.com for details. **21.** Coverage only available in the continental U.S. and Canada. See Lexus dealer for details. **22.** SiriusXM services require a subscription after trial period. Subscriptions governed by SiriusXM Customer Agreement available at siriusxm.com. If you decide to continue your SiriusXM service at the end of your complimentary trial, the plan you choose will automatically renew and bill at then-current rates unless you call 1-800-967-2346 to cancel. Fees and programming subject to change. Available only to those at least 18 years of age in the 48 contiguous United States and D.C. **23.** HAC is designed to help minimize backward rolling on steep ascents. It is not a substitute for safe driving judgment and practices. Factors including grade, surface conditions and driver input can all affect whether HAC will be effective in preventing a loss of control. See *Owner's Manual* for details. **24.** EPA-estimated ratings. Actual mileage will vary. **25.** Brake Assist is designed to help the driver take full advantage of the benefits of ABS. It is not a substitute for safe driving practices. Braking effectiveness also depends on proper brake-system maintenance and tire and road conditions. **26.** 17-in performance tires are expected to experience greater tire wear than conventional tires. Tire life may be substantially less than 20,000 miles, depending upon driving conditions. **27.** Bluetooth technology phones listed on lexus.com have been tested for compatibility with Lexus vehicles. Performance will vary based on phone software version, coverage and your wireless carrier. Phones are warranted by their manufacturer, not Lexus. The Bluetooth word mark and logos are registered trademarks owned by Bluetooth SIG, Inc. and any use of such marks by Lexus is under license. Other trademarks and trade names are those of their respective owners. **28.** For vehicles without available Navigation System, the Lexus Personalized Settings (LPS) Program is a one-time, complimentary offer for new vehicles for the first 12 months from the date the vehicle is sold. Vehicles with Navigation System allow the driver to change settings. See Lexus dealer for more information. **29.** The Tire Pressure Monitor System alerts the driver when tire pressure is critically low. For optimal tire wear and performance, tire pressure should be checked regularly with a gauge; do not rely solely on the monitor system. See *Owner's Manual* for details. **30.** Smart Stop Technology operates only in the event of certain simultaneous brake and gas pedal applications. When engaged, the system will reduce engine power to help the brakes bring the vehicle to a stop. Factors including speed, road conditions and driver input can all impact stopping distance. Smart Stop Technology is not a substitute for safe and attentive driving and does not guarantee instant stopping. See *Owner's Manual* for details. **31.** TORSEN® is a registered trademark of Zexel Torsen, Inc. **32.** Currently only available pre-installed on select vehicles. Ask your Dealer Sales Consultant for vehicle application. **33.** Continuous average power, all channels driven, at less than 0.1% THD; 20–20,000 Hz. **34.** The Pre-Collision System is designed to help reduce the crash speed and damage in certain frontal collisions only. It is not a collision-avoidance system and is not a substitute for safe and attentive driving. System effectiveness depends on many factors, such as speed, driver input and road conditions. See *Owner's Manual* for further information.

*Lexus strives to build vehicles to match customer interest, and thus they typically are built with popular options and option packages. Not all options/packages are available separately, and some may not be available in all regions of the country. See lexus.com for information about options/packages commonly available in your area. If you would prefer a vehicle without any or with different options, contact your dealer to check for current availability or the possibility of placing a special order. Specifications, features, equipment, technical data, performance figures, options, and color and trim are based upon information available at time of posting, are subject to change without notice, and are for mainland U.S.A. vehicles only. Some vehicles shown with available equipment. See your Lexus dealer for details. Lexus reminds you to wear seatbelts, secure children in rear seat, obey all traffic laws and drive responsibly. For more information, call 800-USA-LEXUS (872-5398) or visit lexus.com. To learn more about your financing options, contact your Lexus dealer or call Lexus Financial Services at 800-874-7050. ©2012 Lexus.