

15 | GX

امداد خودرو فارما



GX 460

301-hp, 4.6-liter V8; dual Variable Valve Timing with intelligence (VVT-i); six-speed automatic Electronically Controlled Transmission with intelligence (ECT-i); full-time four-wheel drive (4WD); seven-passenger seating.



DARE TO BE
SPONTANEOUS.



INTRODUCING
THE 2015 LEXUS GX



Whether it's rugged terrain or the urban landscape, the GX is up to the challenge. In the mood for a certain type of cuisine? With the available Lexus Enform App Suite² you can use your favorite mobile apps to find restaurants and even make reservations. And, to help you arrive with confidence, available advanced camera systems^{3,4} provide assistance at low speeds, helping you see around blind corners and navigate tight parking spaces more easily.

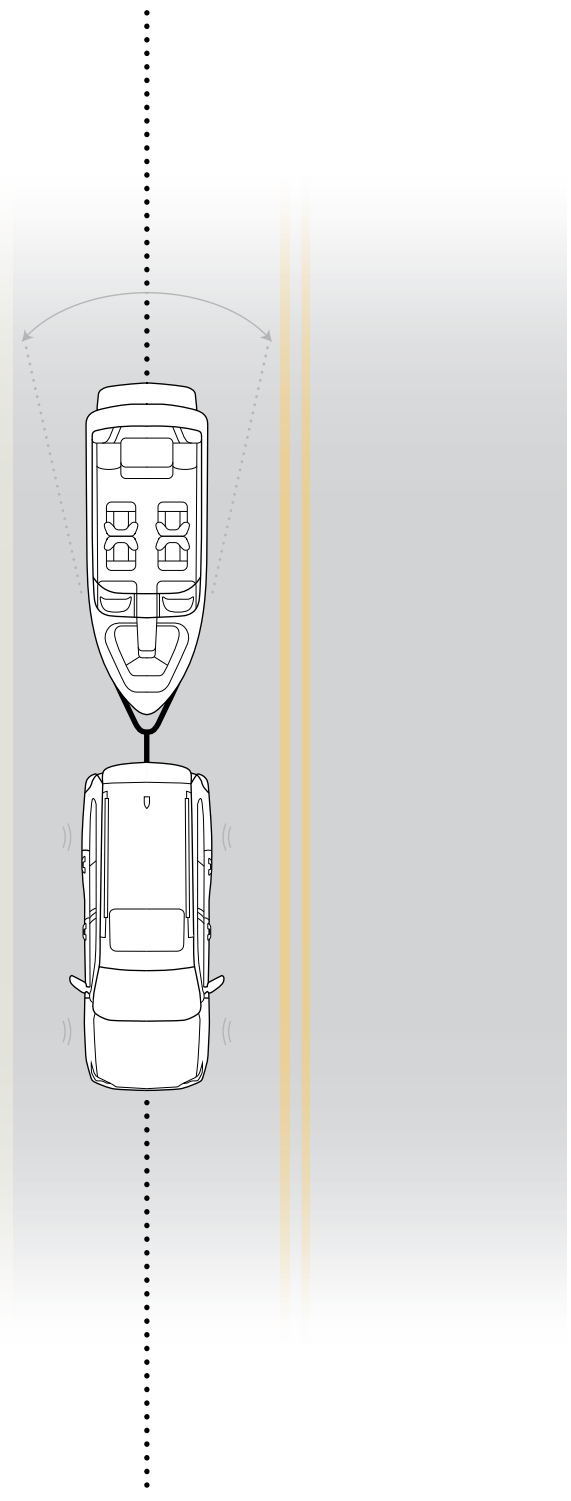


VERSATILITY

The GX interior is meticulously crafted right down to the Linear Espresso or available Mahogany wood trim. First-class seating features supple, yet durable, available fine leather trim. A tilt-and-slide seat feature simplifies passenger-side access to the third row. And with available heated and ventilated front seats, heated outboard second-row seats and three-zone climate control, you're sure to arrive in comfort and style.



THE MOST DIRECT WAY TO
PEACE OF MIND IS A STRAIGHT LINE.



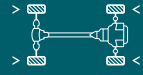
Trailer Sway Control⁷ offers an added dose of confidence to your towing adventure as part of the Vehicle Stability Control (VSC)⁸ system. To help reduce sway, braking is applied independently to each wheel and the throttle can be moderated. A flashing indicator alerts the driver when the system is taking corrective measures.

امداد خودرو فارما

تلفن شبانه روزی: ۰۲۱-۸۸۸۶۲۰۸۵

FarmaSOS.com

TECHNOLOGY TO KEEP YOU A STEP AHEAD, EVERY STEP OF THE WAY.



FULL-TIME 4WD

The full-time 4WD system features a TORSEN® torque-sensing limited-slip center differential⁹ that, combined with 4-wheel Active Traction Control, efficiently delivers engine power to the wheels with traction, helping to minimize tire spin in slippery conditions. A two-speed transfer case offers extra off-road capability. And, for maximum off-road traction, the center differential can be locked with the press of a button.



ENGINE AND TOWING

The 4.6-liter V8, paired with dual Variable Valve Timing with intelligence, generates 301 horsepower at 5,500 rpm¹ and 329 lb-ft of torque at 3,500 rpm.¹ The top-end power is helpful during acceleration or climbing long highway grades. And low-end torque is most beneficial during off-the-line pulling and off-road use. Thanks to its powerful engine and robust body-on-frame construction, the GX boasts a 6,500-lb towing capacity.^{5,6}



CRAWL CONTROL

Think of it as the off-road equivalent of cruise control. With the press of a button, the available CRAWL Control¹⁰ system carefully manages the engine and brakes to help you maintain a slow, consistent speed: up, down and over rugged terrain. And, for added control, you can alternate between five driver-selectable settings using a toggle switch.



REAR-SEAT ENTERTAINMENT

The available dual-screen Rear-Seat Entertainment System¹¹ allows the left and right rear-seat passengers to enjoy separate entertainment. With 7.0-inch LCD screens located behind the driver's and front passenger's headrests, the system features a pair of wireless headphones¹² and can be used as a DVD player, audio player or game console.



ADVANCED CONNECTIVITY

The innovative Siri® Eyes Free¹³ connects with your compatible iPhone,¹⁴ enabling you to access e-mail, send text messages and more. In addition, to help you make the most of your travel, an industry-first subscription-free traffic and weather service¹⁵ offers real-time updates of changing conditions via HD Radio.^{TM15} Learn more at lexus.com/enform.



3-D NAVIGATION

Offering added information and clarity, the available Navigation System¹⁶ features three-dimensional maps with overhead views as well as 3-D buildings and landmarks. The system can also help predict your time of arrival based on current traffic conditions and, when there is congestion on your current route, Traffic Detour Preview can automatically display alternate routes.



MULTIDIMENSIONAL AUDIO

Designed exclusively for the GX, the available Mark Levinson® Premium Surround Sound System¹⁷ features 71-channel architecture, 17 speakers and 330 watts of maximum power. The result is an audio experience that resembles a concert hall, immersing the cabin in multidimensional sound that was once reserved for six-figure home-audio systems.



PRE-COLLISION SYSTEM

If the available Pre-Collision System¹⁸ detects an imminent frontal collision, it is designed to retract the front seatbelts and apply the brakes to help reduce impact speed. The system also features a Driver Attention Monitor,¹⁹ which is designed to detect if the driver is not facing forward and signal an alert if it detects an object ahead.





LIVE LIFE,
UNOBSTRUCTED.





A. Available Ecu leather interior trim **B.** Contrast dash stitching and available Mahogany wood trim **C.** Available heated and ventilated front seats **D.** Available carpet cargo mat. For a complete list of Genuine Lexus Accessories, visit lexus.com/GX/accessories **E.** Available Navigation System with high-resolution display **F.** Available electrochromatic power-folding outside mirror with Side Monitor²⁴ camera



G. Available GX capability controls **H.** Available Ecu leather interior trim **I.** Available Rear-Seat Entertainment System (RSES) **J.** Available Mahogany wood interior trim **K.** Available dual-screen DVD Rear-Seat Entertainment System¹¹ with wireless headphones¹² and remote **L.** Available rear-seat climate controls



ON- AND OFF-ROAD CAPABILITY

Whether you're navigating through rocky mountains²⁵ or simply driving around town, the GX is equipped for either task. Thanks to its ingenious Kinetic Dynamic Suspension System (KDSS), which is designed to change with the terrain, it can automatically optimize handling when the road is smooth and allow more independent wheel movement on uneven ground.



اندر خودرو فارما

تلفن شبانه و روز: ۰۲۱-۸۸۸۶۲۰۸۵

FarmaSOS.com

KEY STANDARD FEATURES BY TRIM

GX

18-inch six-spoke alloy wheels²⁶ // Black NuLuxe interior trim // Linear Espresso wood and Abyss Black interior trim // Fold-flat third-row seats // Lexus Display Audio with 8.0-inch color touchscreen, subscription-free traffic and weather,¹⁵ and backup camera⁴ // Trailer Sway Control⁷ // LED headlamps and daytime running lights (DRL) // Power moonroof // Privacy glass // Roof rails^{27,28} // Lexus Memory System // 10-way power-adjustable front seats // Reclining, sliding middle-row seats with 40/20/40-split seatback // Lexus nine-speaker Premium Sound System // USB iPod²⁹ connectivity // Bluetooth³⁰ phone connectivity // SmartAccess^{31,32} with push-button Start/Stop // Dual-zone climate control with interior air filter // 10 standard airbags³³ // Lexus Enform Safety Connect.³⁴ Subscription required. One-year trial subscription included

GX PREMIUM

(Includes all GX features and Navigation Package) + 18-inch split-six-spoke alloy wheels²⁶ // Leather interior trim // Heated and ventilated front seats and heated second-row outboard seats // Three-zone automatic climate control with interior air filter, smog sensor and automatic recirculation mode // Mahogany wood interior trim // Rain-sensing wipers // Windshield deicer // LED foglamps // Intuitive Parking Assist²⁰

GX LUXURY

(Includes all GX Premium features) + Adaptive Variable Suspension (AVS) // Auto-leveling rear air suspension // 18-inch split-six-spoke alloy wheels²⁶ with Liquid Graphite finish // Semi-aniline leather interior trim // Blind Spot Monitor²¹ with Rear Cross-Traffic Alert²² // Power-folding, electrochromic (auto-dimming) outside mirrors // Wood- and leather-trimmed heated steering wheel // Illuminated door-sill scuff plates // Power fold-flat third-row seats // Headlamp washers // Cargo-area tonneau cover

PACKAGES

COMFORT PACKAGE (Available on GX only)

Heated and ventilated front seats // Heated second-row outboard seats // Three-zone automatic climate control with interior air filter, smog sensor and automatic recirculation mode

NAVIGATION PACKAGE (Available on GX only)

Navigation System // Advanced voice command // High-resolution color LCD display // Wide-view backup camera⁴ // Lexus Enform App Suite² with Bing,TM iHeartRadio, OpenTable,[®] MovieTickets.com, Pandora,^{®35} Yelp[®] and Facebook Places // Lexus Enform Destinations. Subscription required. One-year trial subscription included // Enhanced Bluetooth³⁰ technology³⁰ with automatic phonebook synchronization

MARK LEVINSON PREMIUM SURROUND SOUND AUDIO PACKAGE (Available on GX Luxury only)

(Includes Navigation Package) + Mark Levinson 17-speaker, 330-watt Premium Surround Sound Audio System¹⁷ // Automatic Sound Levelizer (ASL) // 7.1-channel architecture // DVD/CD player

DRIVER SUPPORT PACKAGE (Available on GX Luxury only)

(Includes Navigation and Mark Levinson Premium Surround Sound Audio Packages) + Pre-Collision System¹⁸ with Dynamic Radar Cruise Control³⁶ // Driver Attention Monitor¹⁹ // Lane Departure Alert²³ // Intelligent high-beam headlamps³⁷ // Wide-view Front and Side Monitor system³ // CRAWL Control¹⁰

INDIVIDUAL OPTIONS

Blind Spot Monitor²¹ with Rear Cross-Traffic Alert²² and power-folding electrochromic (auto-dimming) outside mirrors // Headlamp washers // Intuitive Parking Assist²⁰ (GX only) // Dual-screen DVD Rear-Seat Entertainment System (RSES)¹¹ (GX Luxury only) // Wood- and leather-trimmed steering wheel and shift knob (GX Premium only) // Cargo-area tonneau cover (GX, GX Premium only)

KEY SPECS

4.6L V8

301^{HP}¹

329^{LB-FT}¹

6,500^{LB}⁵⁶

ENGINE

HORSEPOWER

TORQUE

TOWING CAPACITY

FULL-TIME 4WD

6-SPEED

DRIVETRAIN

SEQUENTIAL-SHIFT AUTOMATIC TRANSMISSION

15 / 20 / 17³⁹ EST MPG

64.7^{CU FT}⁴⁰

FUEL ECONOMY, EPA-ESTIMATED RATINGS (CITY / HIGHWAY / COMBINED)

CARGO CAPACITY

WHEELS



18-in six-spoke alloy wheels²⁶ GX



18-in split-six-spoke alloy wheels²⁶ GX Premium



18-in split-six-spoke alloy wheels²⁶ with Liquid Graphite finish GX Luxury



FSPORT 18-in 12-spoke alloy wheels^{26,38} Available

8.1^{IN}

41.4^{FT}

GROUND CLEARANCE

TURNING CIRCLE



HEIGHT

74.2 IN
73.8 IN (GX LUXURY)

WIDTH

74.2 IN

7-PASSENGER

OCCUPANT SEATING



WHEELBASE

109.8 IN

OVERALL LENGTH

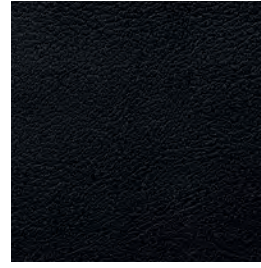
192.1 IN

GX shown in Claret Mica // Options shown.

LEXUS ENFORM What is Lexus Enform? Lexus Enform is Lexus-branded connected services and currently consists of the following products: Lexus Enform Safety Connect, Lexus Enform Destinations and Lexus Enform App Suite. To learn more visit lexus.com/enform.

For a complete list of features and to view configurations available in your area, please visit lexus.com/GXbuild.

INTERIOR



BLACK
LEATHER*†
or NULUXE

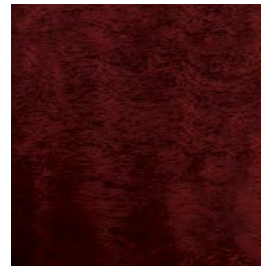


ECRU
LEATHER*†

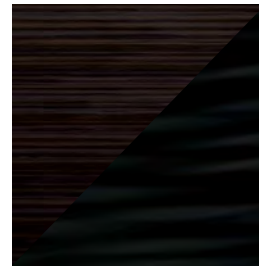


SEPIA
LEATHER*†

TRIM



MAHOGANY*
WOOD



LINEAR
EXPRESSO
WOOD &
ABYSS BLACK

EXTERIOR



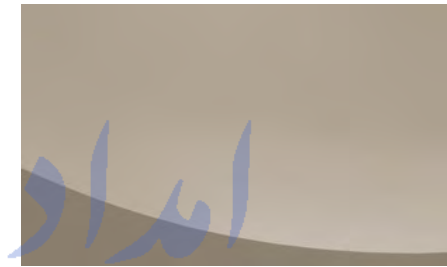
STARFIRE PEARL



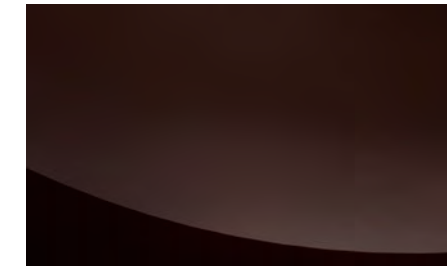
SILVER LINING METALLIC



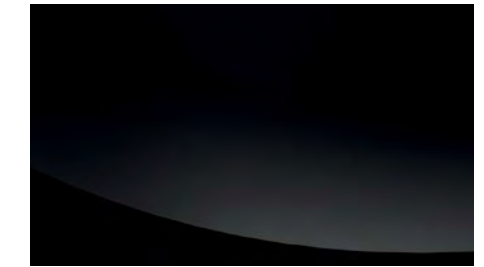
NEBULA GRAY PEARL



SATIN CASHMERE METALLIC



FIRE AGATE PEARL



BLACK ONYX



CLARET MICA

امداد خودرو فارما

تلفن شبانه روزی: ۰۲۱-۸۸۸۶۲۰۸۵

FarmaSOS.com

	EXTERIOR	Starfire Pearl	Silver Lining Metallic	Nebula Gray Pearl	Satin Cashmere Metallic	Fire Agate Pearl	Black Onyx	Claret Mica	TRIM	Mahogany Wood*	Linear Espresso Wood & Abyss Black
Black		●▲	●▲	●▲		●▲	●▲	●▲		▲	●
Ecrú		▲	▲	▲	▲	▲	▲	▲		▲	
Sepia		▲		▲	▲	▲	▲	▲		▲	

● GX

▲ GX Premium/Luxury

* Optional

† Semi-aniline leather on GX Luxury

SERVICES AS INNOVATIVE AS THE GX ITSELF.

THE LEXUS DELIVERY AND TECHNOLOGY SPECIALISTS. To assist you in getting the most out of your GX, the Lexus Delivery Specialist will conduct a personalized delivery focused on every feature, setting and function you desire. To answer questions that arise after delivery, the Lexus Technology Specialist can offer expert guidance in person or without you ever leaving the driveway, via camera-enabled iPad®14 apps like FaceTime.®41 Learn more about our Lexus Delivery and Technology Specialist services at lexus.com/specialists.

WARRANTY Four-year/50,000-mile Lexus Limited Warranty. Six-year/70,000-mile Powertrain Warranty. Six-year/unlimited-mileage Corrosion Perforation Warranty. All warranties with zero deductible. See the *GX Warranty and Services Guide* at your Lexus dealer for details. **DISCLOSURES** 1. Ratings achieved using the required premium unleaded gasoline with an octane rating of 91 or higher. If premium fuel is not used, performance will decrease. 2. Be sure to obey traffic regulations and maintain awareness of road and traffic conditions at all times. Apps/services vary by phone/carrier; functionality depends on many factors. Select apps use large amounts of data; you are responsible for charges. Apps & services subject to change. See lexus.com/enform for details. 3. The Wide-view Front and Side Monitor does not provide a comprehensive view of the front and side areas of the vehicle. You should also look around outside your vehicle and use your mirrors to confirm clearance. Cold weather will limit effectiveness and view may become cloudy. 4. The backup camera does not provide a comprehensive view of the rear area of the vehicle. You should also look around outside your vehicle and use your mirrors to confirm rearward clearance. Cold weather may limit effectiveness and view may become cloudy. 5. Before towing, confirm your vehicle and trailer are compatible, hooked up and loaded properly and that you have any necessary additional equipment. Do not exceed any Weight Ratings and follow all instructions in your *Owner's Manual*. The maximum you can tow depends on the total weight of any cargo, occupants and available equipment. Calculated with the new SAE J2807 method. 6. Please consult your Lexus dealer or *Owner's Manual* for towing and load specifications. 7. Trailer Sway Control (TSC) is an electronic system designed to help the driver maintain vehicle control under adverse conditions. It is not a substitute for safe driving practices. Factors including speed, road conditions and driver steering input can all affect whether TSC will be effective in preventing a loss of control. See *Owner's Manual* for details. 8. Vehicle Stability Control (VSC) is an electronic system designed to help the driver maintain vehicle control under adverse conditions. It is not a substitute for safe driving practices. Factors including speed, road conditions and driver steering input can all affect whether VSC will be effective in preventing a loss of control. See *Owner's Manual* for further details. 9. TORSEN® is a registered trademark of Zexel Torsen, Inc. 10. CRAWL Control is designed for driving on difficult terrain at low speeds. It assists the driver by controlling acceleration and braking, allowing the driver to focus on steering. The GX 460 is designed to meet off-road driving requirements, but off-roading is inherently dangerous. Always wear seatbelts. 11. A single-disc DVD player is standard. A separate DVD player or game system utilizing the center console's video/audio inputs is required in order to use the split-screen function of the dual-screen system. 12. Headphones are for passenger use only. Do not use while operating vehicle. 13. Always drive safely, obey traffic laws & focus on the road while driving. Siri® is available in Beta only on iPhone® 4S, iPhone® 5, iPad® with Retina® display, iPad® mini, & iPod® touch, 5th gen. & requires Internet access. Siri® is not available in all languages or all areas & features vary by area. Data charges may apply. See apple.com & phone carrier for details. 14. iPhone® and iPad® are registered trademarks of Apple Inc. All rights reserved. 15. Be sure to obey traffic regulations and maintain awareness of road and traffic conditions at all times. HD Radio™ Technology manufactured under license from iBiquity Digital Corporation U.S. and Foreign Patents. HD Radio™ and the HD, HD Radio, and "Arc" logos are proprietary trademarks of iBiquity Digital Corp. 16. Be sure to obey traffic regulations and maintain awareness of road and traffic conditions at all times. Availability & accuracy of the information provided by the Navigation System is dependent upon many factors. Use common sense when relying on information provided. Services and programming subject to change. Services not available in every city or roadway. Updates may be available at an additional cost from your dealer. See *Navigation System Owner's Manual* for details. 17. Mark Levinson® is a registered trademark of Harman International Industries, Inc. 18. The Pre-Collision System is designed to help reduce the crash speed and damage in certain frontal collisions only. The included Driver Attention Monitor is designed to alert the driver if a potential hazard is detected ahead and the driver's face appears to be turned away. They are not collision-avoidance systems and are not substitutes for safe and attentive driving. System effectiveness depends on many factors. See *Owner's Manual* for further information. 19. The Driver Attention Monitor is designed to alert the driver if a potential hazard is detected ahead and the driver's face appears to be turned away. It is not a collision-avoidance system and is not a substitute for safe and attentive driving. System effectiveness depends on many factors. See *Owner's Manual* for further information. 20. Do not exclusively rely on the Intuitive Parking Assist system. Always look over your shoulder and use your mirrors to confirm clearance. System effectiveness depends on many factors. See *Owner's Manual* for details. 21. Do not rely exclusively on the Blind Spot Monitor. Always look over your shoulder and use your turn signal. There are limitations to the function, detection, range and clarity of the monitor. For a complete list of limitations and directions regarding use of the monitor, see *Owner's Manual*. 22. Do not rely exclusively on the Rear Cross-Traffic Alert system. Always look over your shoulder and use your mirrors to confirm rear clearance. There are limitations to the function, detection, range and clarity of the system. To learn more, see *Owner's Manual*. 23. Lane Departure Alert is designed to read lane markers under certain conditions and provide visual and audible alerts when lane departure is detected. It is not a collision-avoidance system or a substitute for safe and attentive driving. Effectiveness depends on many factors. See *Owner's Manual* for more information. 24. The Wide-view Side Monitor system does not provide a comprehensive view of the front passenger-side area of the vehicle. You should also look around outside your vehicle and use your mirrors to confirm clearance. Cold weather will limit effectiveness and view may become cloudy. 25. The GX 460 is designed to meet most off-road driving requirements. Abusive use may result in bodily harm or damage. Lexus encourages responsible operation to help protect you, your vehicle and the environment. Seatbelts should be worn at all times. Please do not allow passengers to ride in the cargo area. Tow hitch receivers/ball mount kits are not intended to provide crash protection. 26. 18-in performance tires are expected to experience greater tire wear than conventional tires. Tire life may be substantially less than 15,000 miles, depending upon driving conditions. 27. Roof rack with rails not recommended for luggage. 28. Roof rack capacity is 176 lb. See *Owner's Manual* for details. 29. iPod® is a registered trademark of Apple Inc. All rights reserved. 30. The Bluetooth® word mark and logos are registered trademarks owned by Bluetooth SIG, Inc. and any use of such marks by Lexus is under license. A compatible Bluetooth-enabled phone must first be paired. Phone performance depends on software, coverage & carrier. 31. The SmartAccess system may interfere with some pacemakers or cardiac defibrillators. If you have one of these medical devices, please talk to your doctor to see if you should deactivate this system. 32. The engine immobilizer is a state-of-the-art anti-theft system. When you insert your key into the ignition switch or bring a SmartAccess fob into the vehicle, the key transmits an electronic code to the vehicle. The engine will only start if the code in the transponder chip inside the key/fob matches the code in the vehicle's immobilizer. Because the transponder chip is embedded in the key/fob, it can be costly to replace. If you lose a key or fob, your Lexus dealer can help. Alternatively, you can find a qualified independent locksmith to perform high-security key services by consulting your local *Yellow Pages* or by contacting www.aloa.org. 33. All the airbag (AB) systems are Supplemental Restraint Systems. All ABs are designed to inflate only under certain conditions and in certain types of severe collisions: frontal and knee ABs typically inflate in frontal collisions; side and side curtain ABs in side collisions; Roll-Sensing Curtain ABs at a severe tilt degree, roll or lateral G-force. In all other accidents, the ABs will not inflate. To decrease the risk of injury from an inflating AB, always wear seatbelts, sit upright in the middle of the seat as far back as possible and do not lean against the door. Do not put objects in front of an AB or around the seatback. Do not use a rearward-facing child seat in any front passenger seat. The force of an inflating AB may cause serious injury or death. See *Owner's Manual* for further information/warnings. 34. Contact with the response center may not be available in all areas. Service Agreements required. A variety of subscription terms available; charges will vary. See lexus.com for details. 35. PANDORA®, the PANDORA® logo, and the Pandora trade dress are trademarks or registered trademarks of Pandora Media, Inc., used with permission. 36. Dynamic Radar Cruise Control is designed to assist the driver and is not a substitute for safe and attentive driving practices. See *Owner's Manual* for details. 37. Intelligent high-beams system operates at speeds above 21 mph. Situations such as a dirty windshield, variable weather, lighting conditions and hilly terrain will limit effectiveness. 38. F SPORT Accessories are warranted for 12 months from the date of installation or for the balance of the new-car or Certified Pre-Owned (CPO) warranty in force at the date of installation, whichever is greater, when installed by an authorized Lexus dealer. F SPORT Accessories installed by anyone other than an authorized Lexus dealer are warranted for 12 months from the date of purchase only, and the warranty coverage is limited to the replacement value of the F SPORT Accessories. These warranties do not cover maintenance services such as replacement of brake pads/linings and clutch linings or noise, vibration, cosmetic conditions and other deterioration caused by normal wear and tear. Part failure caused by improper installation by anyone other than an authorized Lexus dealer may void the F SPORT Accessories warranty, the new-vehicle warranty or both. F SPORT is a trademark of Toyota Motor Corporation. Products available through participating Lexus dealers. 39. 2015 EPA-estimated ratings. Actual mileage will vary. 40. Cargo and load capacity limited by weight and distribution. 41. FaceTime® is a registered trademark of Apple Inc. All rights reserved.

Lexus strives to build vehicles to match customer interest, and thus they typically are built with popular options and option packages. Not all options/packages are available separately, and some may not be available in all regions of the country. See lexus.com for information about options/packages commonly available in your area. If you would prefer a vehicle without any or with different options, contact your dealer to check for current availability or the possibility of placing a special order. Specifications, features, equipment, technical data, performance figures, options, and color and trim are based upon information available at time of printing, are subject to change without notice, and are for mainland U.S.A. vehicles only. Some vehicles shown with available equipment. See your Lexus dealer for details. Lexus reminds you to wear seatbelts, secure children in rear seat, obey all traffic laws and drive responsibly. For more information, call 800-USA-Lexus (872-5398) or visit lexus.com. To learn more about your financing options, contact your Lexus dealer or call Lexus Financial Services at 800-874-7050.

