

GX

امداد خودرو فارما

14

تلفون: ۰۲۱-۸۸۸۶۲۰۸۵

FarmaSOS.com



GX 460 301-hp, 4.6-liter V8; dual Variable Valve Timing with intelligence (VVT-i); six-speed automatic Electronically Controlled Transmission with intelligence (ECT-i); full-time four-wheel drive (4WD); seven-passenger seating.



IT DOES ONE THING EXCEPTIONALLY WELL. EVERYTHING.



LET THE OCCASION RISE TO YOU.
THE 2014 LEXUS GX.

امداد خودرو فارما
تلفن شبانه روزی: ۰۲۱-۸۸۸۶۲۰۸۵
FarmaSOS.com



The GX isn't only spacious. With ample room for seven passengers, it's also meticulously crafted right down to the Linear Espresso and available Mahogany wood trim and supple, yet durable, fine leather trim. And with available heated and ventilated front seats, heated outboard second-row seats and climate control for the second and third rows, you're sure to arrive both in style and in comfort.



THE MOST DIRECT WAY TO PEACE OF MIND IS A STRAIGHT LINE.

امداد خودرو فارما

تلفن شبانه روزی: ۰۸۵ ۸۸۸۶۲۰۳۱

FarmaSOS.com

Trailer Sway Control⁴ continually monitors the yaw rate, acceleration and steering sensors to help prevent or control unwanted trailer movement.

If excessive movement caused by wind, bumpy roads or steering operation is detected, corrective measures are engaged.

To help reduce sway, braking is applied independently to each wheel and the throttle is moderated to help reduce vehicle speed.

If deceleration is required, the brake lights are automatically illuminated.

When Trailer Sway Control⁴ is taking corrective measures, the indicator flashes to alert the driver.

VERSATILITY In addition to the convenience of a second-row 40/20/40-split seatback that accommodates various kinds of cargo,⁵ the second-row passenger-side seat tilts and slides forward to allow easy access to the third row. And to make packing even easier, the available power third-row seat can automatically fold flat into the cargo area floor at the touch of a button.



امداد خودرو فارما

تلفن شماره رزرو: ۰۲۱-۸۸۶۲۰۸۵

FarmaSOS.com

EVERYTHING YOU COULD WANT, OFTEN BEFORE YOU EVEN KNOW IT.



ADVANCED CONNECTIVITY

To help you arrive sooner, subscription-free traffic and weather service⁶ offers real-time updates of changing conditions. And to help you make the most of your trip, the available Lexus Enform^{®7} with subscription-free App Suite⁷ uses your compatible smartphone to give you in-vehicle access to many of your favorite mobile applications.



3-D NAVIGATION

Offering added information and clarity, the available Navigation System⁸ features three-dimensional maps with overhead views as well as 3-D buildings and landmarks. The system can also predict your time of arrival based on current traffic conditions and, when there is congestion on your current route, Traffic Detour Preview automatically displays alternate routes.



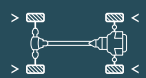
ENGINE AND TOWING

The 4.6-liter V8, paired with Variable Valve Timing with intelligence, generates 301 horsepower at 5,500 rpm¹ and 329 lb-ft of torque at 3,500 rpm¹. The top-end power is helpful during acceleration or climbing long highway grades. And low-end torque is most beneficial during off-the-line pulling and off-road use. Thanks to its powerful engine and robust body-on-frame construction, the GX boasts a 6,500-lb towing capacity.^{2,3}



CRAWL CONTROL

Think of it as the off-road equivalent of cruise control. With the press of a button, the available CRAWL Control⁹ system carefully manages the engine and brakes to help you maintain a slow, consistent speed: up, down and over rugged terrain. And, for added control, you can alternate between five speeds using a toggle switch.



FULL-TIME 4WD

The full-time 4WD system features a TORSEN[®] torque-sensing limited-slip center differential¹⁰ that, combined with 4-wheel Active Traction Control, efficiently delivers engine power to the wheels with traction, helping to minimize tire spin in slippery conditions. And, for maximum off-road traction, the center differential can be locked with the press of a button.



REAR-SEAT ENTERTAINMENT

The available dual-screen Rear-Seat Entertainment System¹¹ allows the left and right rear-seat passengers to enjoy separate entertainment. With 7.0-inch LCD screens located behind the driver's and front passenger's headrests, the system features a pair of wireless headphones¹² and can be used as a DVD player, audio player or game console.



MULTI-DIMENSIONAL AUDIO

Designed exclusively for the GX, the available Mark Levinson Premium Surround Sound System¹³ features 7.1-channel architecture, 17 speakers and 330 watts of maximum power. The result is an audio experience that resembles a concert hall, immersing the cabin in multi-dimensional sound that was once reserved for six-figure home audio systems.



PRE-COLLISION SYSTEM

If the available Pre-Collision System¹⁴ detects an imminent frontal collision, it is designed to retract the front seatbelts and apply the brakes to help reduce impact speed. The system also features a Driver Attention Monitor,¹⁵ which is designed to detect if the driver is not facing forward and signal an alert if it detects an object ahead.

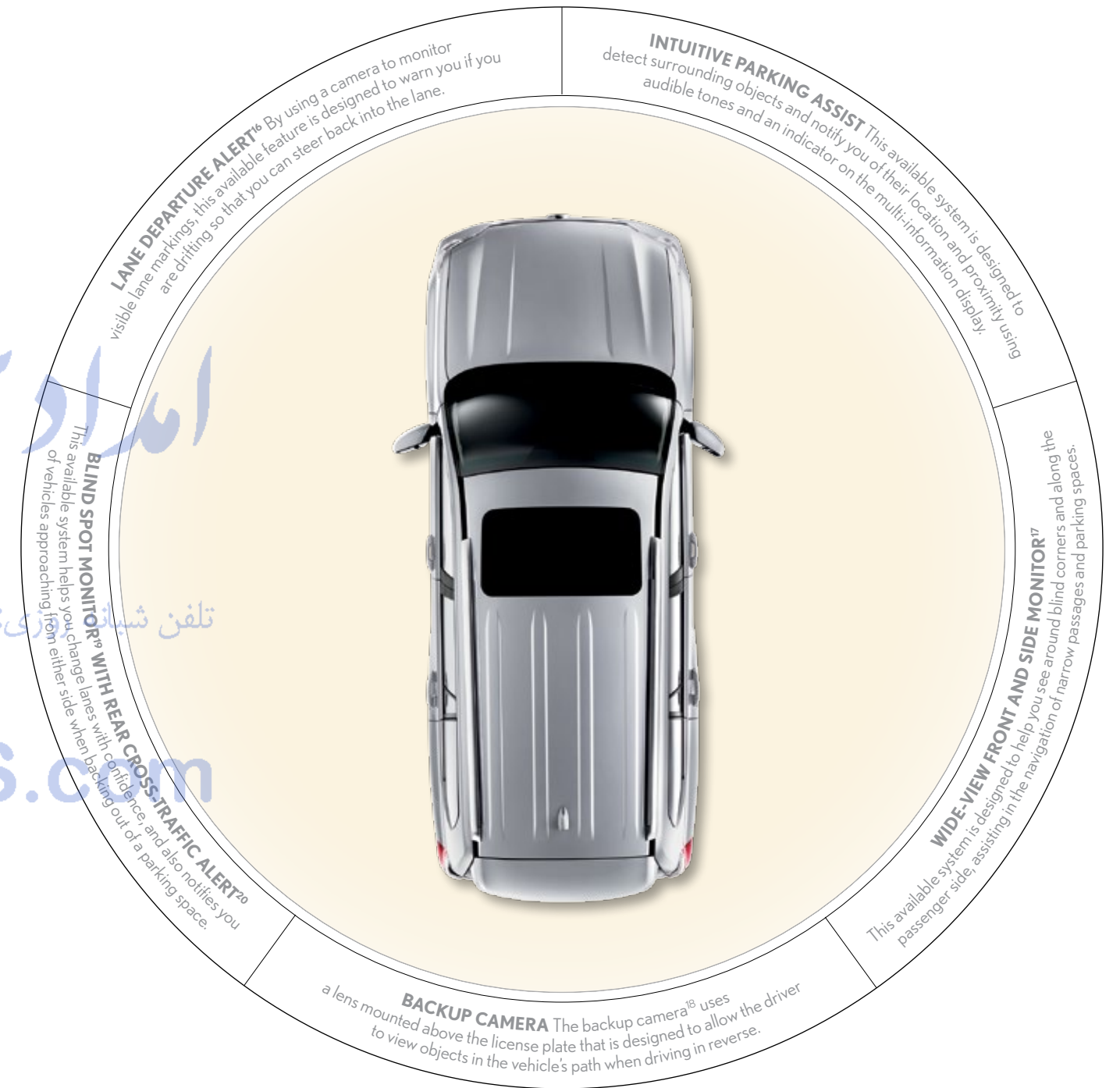


امداد خودروما

تلفن شبانه روزی: ۰۲۱-۸۸۸۶۲۰۸۵

FarmaSOS.com

LIVE LIFE,
UNOBSTRUCTED.



امداد خودرو فا
تلفن شبانه روزی: ۰۸۵۰۶۲۸۸۶۲
parmaSOS.com



A. Available Ecrú leather interior trim **B.** Contrast dash stitching and available Mahogany wood trim **C.** Available heated and ventilated front seats **D.** Available electrochromatic power-folding outside mirror with Side Monitor²¹ camera **E.** Black Nuluxe-trimmed interior **F.** Available Mahogany wood interior trim



G. Available GX capability controls **H.** Available Ecrú leather-trimmed interior **I.** Available Rear-Seat Entertainment System (RSES) **J.** Available carpet cargo mat. For a complete list of Genuine Lexus Accessories, visit lexus.com/GX/accessories **K.** Available dual-screen DVD Rear-Seat Entertainment System¹¹ with wireless headphones¹² and remote **L.** Available rear-seat climate controls



**ON- AND OFF-ROAD
CAPABILITY**

Whether you're navigating through rocky mountains²² or simply driving around town, the GX is equally up for either task. Thanks to its ingenious Kinetic Dynamic Suspension System (KDSS), which is designed to change with the terrain, it can automatically optimize handling when the road is smooth and allow more independent wheel movement on uneven ground.



ایزد خودرو فارما

تلفن شبانه روزی: ۰۲۱-۸۸۸۶۲۰۸۵

FarmaSOS.com

KEY STANDARD FEATURES BY TRIM

GX

18-inch six-spoke alloy wheels²³ // NuLuxe interior trim // Linear Espresso wood and Abyss Black interior trim // Fold-flat third-row seats // Lexus Display Audio with 8.0-inch color touchscreen subscription-free traffic and weather⁶ and backup camera¹⁸ // Trailer Sway Control⁴ // LED headlamps and daytime running lights (DRL) // Power moonroof // Privacy glass // Roof rails^{24,25} // Lexus Memory System // 10-way power-adjustable front seats // Reclining, sliding middle-row seats with 40/20/40-split seatback // Lexus nine-speaker Premium Sound System // USB iPod²⁶ connectivity // Bluetooth²⁷ phone connectivity // SmartAccess^{28,29} with push-button Start/Stop // Dual-zone climate control with interior air filter // 10 standard airbags³⁰

GX PREMIUM

(Includes all GX features and Navigation Package) + 18-inch split-six-spoke alloy wheels²³ // Leather interior trim // Heated and ventilated front seats and heated second-row outboard seats // Three-zone automatic climate control with interior air filter, smog sensor and automatic recirculation mode // Mahogany wood interior trim // Rain-sensing wipers // Windshield deicer // LED foglamps // Intuitive Parking Assist

GX LUXURY

(Includes all GX Premium features) + Adaptive Variable Suspension (AVS) // Auto-leveling rear air suspension // 18-inch split-six-spoke alloy wheels²³ with Liquid Graphite finish // Semi-aniline leather interior trim // Blind Spot Monitor¹⁹ with Rear Cross-Traffic Alert²⁰ // Power-folding, electrochromic (auto-dimming) outside mirrors // Wood- and leather-trimmed heated steering wheel // Illuminated door-sill scuff plates // Power fold-flat third-row seats // Headlamp washers // Cargo-area tonneau cover

For complete list, visit lexus.com/GX/features

WHEELS



18-in six-spoke alloy wheels²³
GX



18-in split-six-spoke alloy wheels²³
GX Premium



18-in split-six-spoke alloy wheels²³ with Liquid Graphite finish
GX Luxury



F SPORT 18-in 12-spoke alloy wheels²³
Available

For more info, visit lexus.com/GX/wheels

KEY SPECS

4.6L V8

301_{HP}¹

329_{LB-FT}¹

6,500_{LB}^{2,3}

ENGINE

HORSEPOWER

TORQUE

TOWING CAPACITY

FULL-TIME 4WD

6-SPEED

DRIVETRAIN

SEQUENTIAL-SHIFT AUTOMATIC TRANSMISSION

15 / 20 / 17³³ EST MPG

64.7_{CU FT}⁵

FUEL ECONOMY, EPA-ESTIMATED RATINGS
(CITY / HIGHWAY / COMBINED)

CARGO CAPACITY

PACKAGES

COMFORT PACKAGE (Available on GX only)

Heated and ventilated front seats // Heated second-row outboard seats // Three-zone automatic climate control with interior air filter, smog sensor and automatic recirculation mode

NAVIGATION PACKAGE (Available on GX only)

Navigation System⁸ // Advanced voice command // High-resolution color LCD display // Wide-view backup camera¹⁸ // Enhanced Bluetooth technology²⁷ // Lexus Enform⁷ with Destination Assist and eDestination. Subscription required. One-year trial subscription included // Subscription-free Lexus Enform App Suite⁷ with BingTM, iHeartRadio, MovieTickets.com, OpenTable[®], Pandora[®], Yelp[®] and Facebook Places // Enhanced Bluetooth technology²⁷ with automatic phonebook synchronization

MARK LEVINSON PREMIUM SURROUND SOUND AUDIO PACKAGE (Available on GX Luxury only)

(Includes Navigation Package) + Mark Levinson 17-speaker, 330-watt Premium Surround Sound Audio System¹³ // Automatic Sound Levelizer (ASL) // 7.1-channel architecture // DVD/CD player

DRIVER SUPPORT PACKAGE (Available on GX Luxury only)

(Includes Navigation and Mark Levinson Premium Surround Sound Audio Packages) + Pre-Collision System¹⁴ with Dynamic Radar Cruise Control³¹ // Driver Attention Monitor¹⁵ // Lane Departure Alert¹⁶ // Intelligent high-beam headlamps³² // Wide-view Front and Side Monitor system¹⁷ // CRAWL Control⁹

For complete list, visit lexus.com/GX/packages
For complete list of Genuine Lexus Accessories, visit lexus.com/GX/accessories

INDIVIDUAL OPTIONS

Blind Spot Monitor¹⁹ with Rear Cross-Traffic Alert²⁰ and power-folding electrochromic (auto-dimming) outside mirrors // Headlamp washers // Intuitive Parking Assist (GX only) // Dual-screen DVD Rear-Seat Entertainment System (RSES)¹¹ (GX Luxury only) // Wood- and leather-trimmed steering wheel and shift knob (GX only) // Cargo-area tonneau cover (GX, GX Premium only)

For complete list, visit lexus.com/GX/options

8.1_{IN}

41.4_{FT}

GROUND CLEARANCE

TURNING CIRCLE



HEIGHT

74.2_{IN}
73.8_{IN} (GX LUXURY)

WIDTH

74.2_{IN}

7-PASSENGER

OCCUPANT SEATING



WHEELBASE

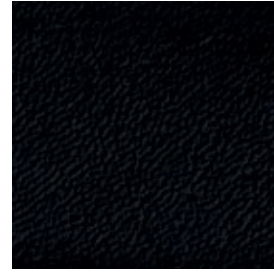
109.8_{IN}

OVERALL LENGTH

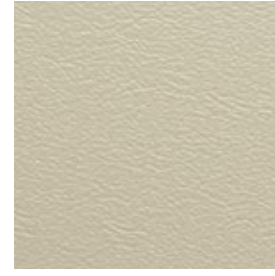
192.1_{IN}

For complete specs, visit lexus.com/GX/specs

INTERIOR



BLACK
LEATHER*†
or NULUXE



ECRU
LEATHER*†



SEPIA
LEATHER*†

TRIM



MAHOGANY*



LINEAR ESPRESSO
WOOD &
ABYSS BLACK

EXTERIOR



STARFIRE PEARL



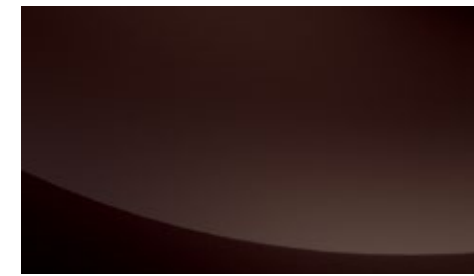
TUNGSTEN PEARL



KNIGHT'S ARMOR PEARL



SATIN CASHMERE METALLIC



FIRE AGATE PEARL



BLACK ONYX



CLARET MICA

INTERIOR	EXTERIOR								TRIM	
	Starfire Pearl	Tungsten Pearl	Knight's Armor Pearl	Satin Cashmere Metallic	Fire Agate Pearl	Black Onyx	Claret Mica	Mahogany Wood*	Linear Espresso Wood & Abyss Black	
Black	●▲	●▲	●▲		●▲	●▲	●▲	▲	●	
Ecru	▲	▲	▲	▲	▲	▲	▲	▲		
Sepia	▲		▲	▲	▲	▲	▲	▲		

● GX

▲ GX Premium/Luxury

* Optional

† Semi-aniline leather on GX Luxury

امداد خودرو فارما

تلفن شبانه روزی: ۰۲۱-۸۸۸۶۲۰۸۵

FarmaSOS.com

WARRANTY Four-year/50,000-mile Lexus Limited Warranty. Six-year/70,000-mile Powertrain Warranty. Six-year/unlimited-mileage Corrosion Perforation Warranty. All warranties with zero deductible. See the *GX Warranty and Services Guide* at your Lexus dealer for details. **DISCLOSURES** 1. Ratings achieved using the required premium unleaded gasoline with an octane rating of 91 or higher. If premium fuel is not used, performance will decrease. 2. Please consult your Lexus dealer or *Owner's Manual* for towing and load specifications. 3. Before towing, confirm your vehicle and trailer are compatible, hooked up and loaded properly and that you have any necessary additional equipment. Do not exceed any Weight Ratings and follow all instructions in your *Owner's Manual*. The maximum you can tow depends on the total weight of any cargo, occupants and available equipment. 4. Trailer Sway Control (TSC) is an electronic system designed to help the driver maintain vehicle control under adverse conditions. It is not a substitute for safe driving practices. Factors including speed, road conditions and driver steering input can all affect whether TSC will be effective in preventing a loss of control. See *Owner's Manual* for details. 5. Cargo and load capacity limited by weight and distribution. 6. Always drive safely, obey traffic laws & focus on the road while driving. Availability and accuracy of the information provided by HD services is dependent upon many factors. Services not available in every city or roadway. Use common sense when relying on information provided. HD Radio™ Technology manufactured under license from iBiquity Digital Corporation U.S. and Foreign Patents. HD Radio™ and the HD, HD Radio, and "Arc" logos are proprietary trademarks of iBiquity Digital Corp. 7. Always drive safely, obey traffic laws & focus on the road while driving. Apps/services vary by phone/carrier; functionality depends on many factors. Select apps use large amounts of data; you are responsible for charges. Apps & services subject to change. Apps identified by ™ or ® are trademarks or registered trademarks of their respective companies. For enrollment and more details, see lexus.com/enform. 8. Always drive safely, obey traffic laws & focus on the road while driving. Availability and accuracy of the information provided by the Navigation System or any HD service is dependent upon many factors. Use common sense when relying on information provided. Services and programming subject to change. Services not available in every city or roadway. Navigation updates are available at an additional cost from your local Lexus dealer. See your *Navigation System Owner's Manual* or Lexus dealer for details. HD Radio™ Technology manufactured under license from iBiquity Digital Corporation U.S. and Foreign Patents. HD Radio™ and the HD, HD Radio, and "Arc" logos are proprietary trademarks of iBiquity Digital Corp. 9. CRAWL Control is designed for driving on difficult terrain at low speeds. It assists the driver by controlling acceleration and braking, allowing the driver to focus on steering. The GX 460 is designed to meet off-road driving requirements, but off-roading is inherently dangerous. Always wear seatbelts. 10. TORSEN® is a registered trademark of Zexel Torsen, Inc. 11. A single-disc DVD player is standard. A separate DVD player or game system utilizing the center console's video/audio inputs is required in order to use the split-screen function of the dual-screen system. 12. Headphones are for passenger use only. Do not use while operating vehicle. 13. Mark Levinson® is a registered trademark of Harman International Industries, Inc. 14. The Pre-Collision System is designed to help reduce the crash speed and damage in certain frontal collisions only. The included Driver Attention Monitor is designed to alert the driver if a potential hazard is detected ahead and the driver's face appears to be turned away. They are not collision-avoidance systems and are not substitutes for safe and attentive driving. System effectiveness depends on many factors. See *Owner's Manual* for further information. 15. The Driver Attention Monitor is designed to alert the driver if a potential hazard is detected ahead and the driver's face appears to be turned away. It is not a collision-avoidance system and is not a substitute for safe and attentive driving. System effectiveness depends on many factors. See *Owner's Manual* for further information. 16. Lane Departure Alert is designed to read lane markers under certain conditions and provide visual and audible alerts when lane departure is detected. It is not a collision-avoidance system or a substitute for safe and attentive driving. Effectiveness depends on many factors. See *Owner's Manual* for more information. 17. The Wide-view Front and Side Monitor does not provide a comprehensive view of the front and side areas of the vehicle. You should also look around outside your vehicle and use your mirrors to confirm clearance. Cold weather will limit effectiveness and view may become cloudy. 18. The backup camera does not provide a comprehensive view of the rear area of the vehicle. You should also look around outside your vehicle and use your mirrors to confirm rearward clearance. Cold weather may limit effectiveness and view may become cloudy. 19. Do not rely exclusively on the Blind Spot Monitor. Always look over your shoulder and use your turn signal. There are limitations to the function, detection, range and clarity of the monitor. For a complete list of limitations and directions regarding use of the monitor, see *Owner's Manual*. 20. Do not rely exclusively on the Rear Cross-Traffic Alert system. Always look over your shoulder and use your mirrors to confirm rear clearance. There are limitations to the function, detection, range and clarity of the system. To learn more, see *Owner's Manual*. 21. The Wide-view Side Monitor system does not provide a comprehensive view of the front passenger-side area of the vehicle. You should also look around outside your vehicle and use your mirrors to confirm clearance. Cold weather will limit effectiveness and view may become cloudy. 22. The GX 460 is designed to meet most off-road driving requirements. Abusive use may result in bodily harm or damage. Lexus encourages responsible operation to help protect you, your vehicle and the environment. Seatbelts should be worn at all times. Please do not allow passengers to ride in the cargo area. Towing hitch receivers/ball mount kits are not intended to provide crash protection. 23. 18-in performance tires are expected to experience greater tire wear than conventional tires. Tire life may be substantially less than 15,000 miles depending upon driving conditions. 24. Roof rack with rails not recommended for luggage. 25. Roof rack capacity is 176 lb. See *Owner's Manual* for details. 26. iTunes® and iPod® are registered trademarks of Apple Inc. All rights reserved. 27. The Bluetooth® word mark and logos are registered trademarks owned by Bluetooth SIG, Inc. and any use of such marks by Lexus is under license. Other trademarks and trade names are those of their respective owners. The phones on lexus.com have been tested for Bluetooth® wireless technology compatibility with Lexus vehicles. Performance will vary based on phone software version, coverage and your wireless carrier. 28. The SmartAccess system may interfere with some pacemakers or cardiac defibrillators. If you have one of these medical devices, please talk to your doctor to see if you should deactivate this system. 29. The engine immobilizer is a state-of-the-art anti-theft system. When you insert your key into the ignition switch or bring a SmartAccess fob into the vehicle, the key transmits an electronic code to the vehicle. The engine will only start if the code in the transponder chip inside the key/fob matches the code in the vehicle's immobilizer. Because the transponder chip is embedded in the key/fob, it can be costly to replace. If you lose a key or fob, your Lexus dealer can help. Alternatively, you can find a qualified independent locksmith to perform high-security key services by consulting your local *Yellow Pages* or by contacting www.aloa.org. 30. All the airbag (AB) systems are Supplemental Restraint Systems. All ABs are designed to inflate only under certain conditions and in certain types of severe collisions: frontal and knee ABs typically inflate in frontal collisions; side and side curtain ABs in side collisions; Roll-Sensing Curtain ABs at a severe tilt degree, roll or lateral G-force. In all other accidents, the ABs will not inflate. To decrease the risk of injury from an inflating AB, always wear seatbelts, sit upright in the middle of the seat as far back as possible and do not lean against the door. Do not put objects in front of an AB or around the seatback. Do not use a rearward-facing child seat in any front passenger seat. The force of an inflating AB may cause serious injury or death. See *Owner's Manual* for further information/warnings. 31. Dynamic Radar Cruise Control is designed to assist the driver and is not a substitute for safe and attentive driving practices. See *Owner's Manual* for details. 32. Intelligent high-beams system operates at speeds above 21 mph. Situations such as a dirty windshield, variable weather, lighting conditions and hilly terrain will limit effectiveness, requiring the driver to manually turn off. See *Owner's Manual* for details. 33. 2014 EPA-estimated ratings. Actual mileage will vary.

Lexus strives to build vehicles to match customer interest, and thus they typically are built with popular options and option packages. Not all options/packages are available separately, and some may not be available in all regions of the country. See lexus.com for information about options/packages commonly available in your area. If you would prefer a vehicle without any or with different options, contact your dealer to check for current availability or the possibility of placing a special order. Specifications, features, equipment, technical data, performance figures, options, and color and trim are based upon information available at time of printing, are subject to change without notice, and are for mainland U.S.A. vehicles only. Some vehicles shown with available equipment. See your Lexus dealer for details. Lexus reminds you to wear seatbelts, secure children in rear seat, obey all traffic laws and drive responsibly. For more information, call 800-USA-LEXUS (872-5398) or visit lexus.com. To learn more about your financing options, contact your Lexus dealer or call Lexus Financial Services at 800-874-7050.

