

# ES

امداد خودرو فارما

14

تلفن شبانه روزی: ۰۲۱-۸۸۸۳۲۰۱۵

FarmaSOS.com



**ES 350** 268-horsepower, 3.5-liter V6; selectable driving modes; and a stylish interior featuring contrast stitching, class-leading rear-seat legroom and the exclusive option of a panorama glass roof.

**ES 300h** Hybrid with 40-mpg EPA-estimated combined rating,<sup>1</sup> selectable driving modes with dynamic tachometer and Hybrid System Indicator, rear spoiler and concealed exhaust outlets. Exclusive 17-inch split-five-spoke alloy wheels.<sup>2</sup>

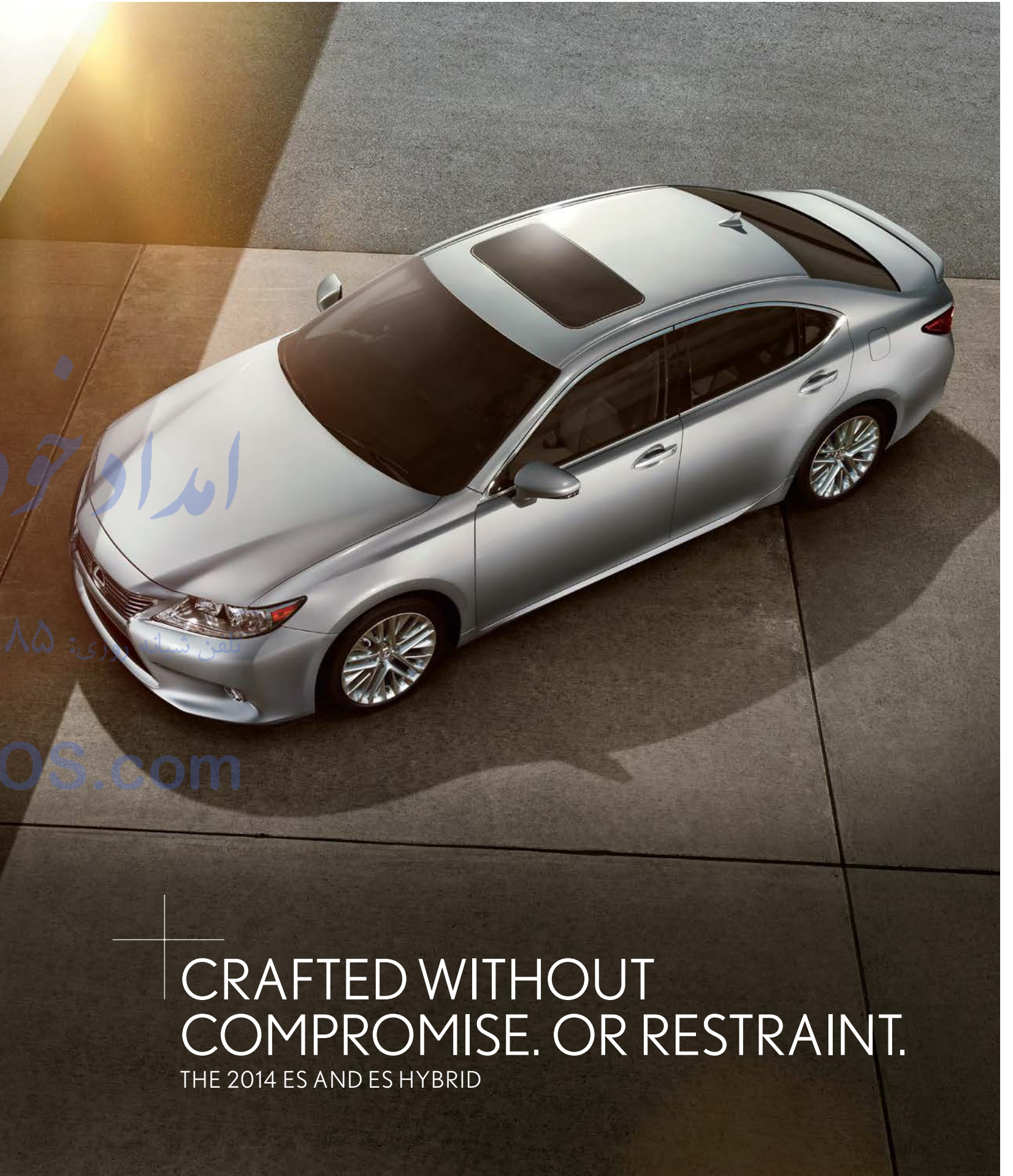


امداد خودرو فارما

تلفن شبانه روزی: ۰۸۵-۸۸۶۲۰۳۱

FarmaSOS.com

TOO MUCH OF A GOOD THING  
CAN ACTUALLY BE A GOOD THING.



امداد خودرو فارما

تلفن مشاوره: ۰۸۵-۸۸۸۶۲۰۲۱

FarmaSOS.com

CRAFTED WITHOUT  
COMPROMISE. OR RESTRAINT.  
THE 2014 ES AND ES HYBRID



تلفن شبانه روزی: ۰۲۱-۸۸۸۶۲۰۸۵  
maSOS.com

It's a striking design that offers more ways to make more of an impression. The sculpted lines of its long, wide stance and sleek profile combine to form a singular presence on the road. The bold styling of its spindle grille, LED daytime running lights and available 18-inch wheels<sup>2</sup> beg for a second look. And, once its lightweight, highly rigid body is set in motion, it becomes all the more unforgettable.



امداد خودرو فارما

تلفن شبانه روزی: ۰۲۱-۸۸۸۶۲۰۸۵

FarmaSOS.com

**CLASS-LEADING  
REAR LEGROOM**

You don't have to sit in the driver's seat to appreciate the modern design of its interior. Making the most of the additional space provided by an extended platform, the rear seat offers generous headroom and the legroom of a much larger sedan.



**40-MPG  
RATED\*  
HYBRID**

The ES 300h Hybrid offers more, even while using less. In addition to providing impeccable refinement, an extended rear valance and an aerodynamic rear spoiler, it features a better fuel economy rating than most subcompact cars<sup>1</sup> and has earned the prestigious SULEV emission status.



“THE **ES 300h** COULD VERY WELL BECOME THE NEXT BENCHMARK FOR HYBRID VEHICLES.”

—AUTOWEEK, FEBRUARY 2013



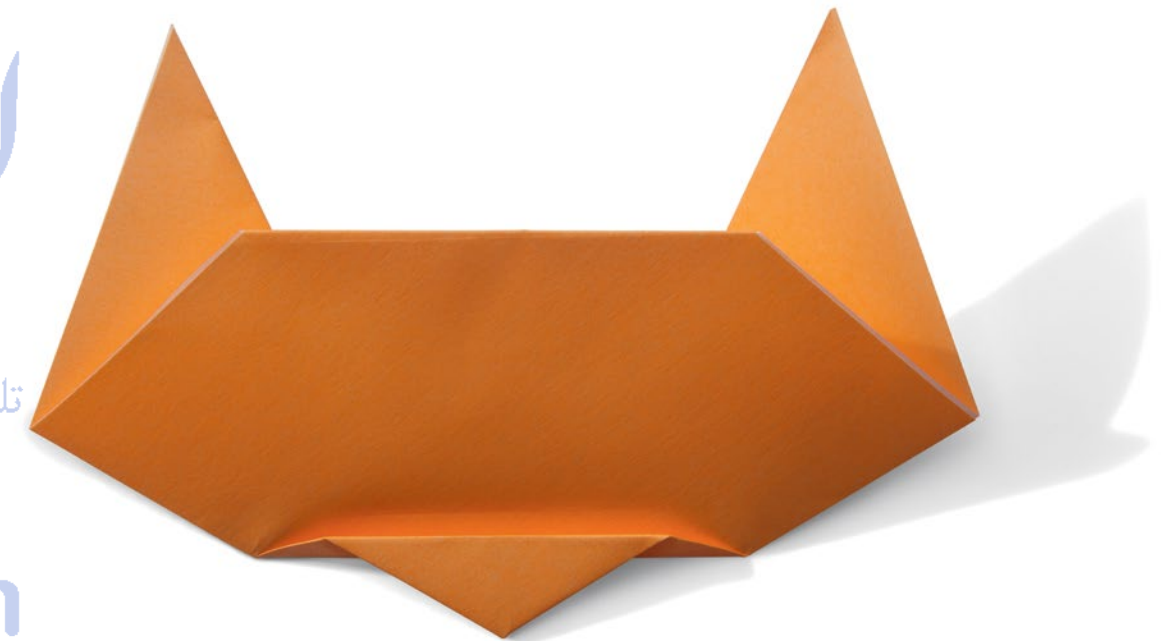
WHAT DOES AN ORIGAMI CAT HAVE TO DO  
WITH WORLD-CLASS CRAFTSMANSHIP?

EVERYTHING.

امداد خودرو فارما

تلفن شبانه روزی: ۰۲۱-۸۸۸۶۲۸۵

FarmaSOS.com



---

The hand-stitching along the curves of the dash requires much from a craftsman: dexterity, skill and tests so demanding that only 12 have passed. Among them: Fold a perfect origami cat. Using only your nondominant hand. In less than 90 seconds.

Stretched across the exquisite contours of the dash, contrast stitching and stunning available wood trim accentuate the spaciousness of the cabin. And, adding intrigue to its modern design, available ambient lighting brightens or dims based on whether the vehicle is moving or parked.

CONTEMPORARY STYLE IN A CAPTIVATING FORM.





#### PANORAMA GLASS ROOF

Offering the appearance of a seamless, all-glass roof on the outside and brighter ambience inside, the panorama glass roof available exclusively on the ES 350 takes luxury to new heights. Other features in the Ultra Luxury Package include side window shades, a power rear sunshade and seating trimmed in supple, semi-aniline leather. And, for the driver, a power-extendable driver's-seat cushion for additional thigh support.



#### VARIABLE DRIVING MODES

Whether you're craving more performance or in the mood to relax in world-class comfort, the level of engagement you desire can vary. With the innovative Drive Mode Select switch, so does the ES. From the added responsiveness of Sport mode to the optimized efficiency of ECO and the all-electric EV<sup>3</sup> (Hybrid only) modes, it's just one of the many ways the ES was designed with the driver in mind.



#### ENFORM APP SUITE

Available Lexus Enform<sup>®4</sup> and Safety Connect<sup>®5</sup> offer more than the convenience of live, 24-hour navigation assistance and the peace of mind knowing emergency services can be requested at the press of a button. With its subscription-free App Suite<sup>4</sup>, you can use your ES to make dinner reservations, order movie tickets and personalize your Pandora<sup>®</sup> playlist more easily than ever.



#### DRIVER COMFORT

Your comfort inside shouldn't vary with the conditions outside. Located where your hands naturally rest, an available heating element in the steering wheel continually monitors and adjusts the heating levels to help maintain a set temperature. For even more personalized comfort, available heated and ventilated front seats offer six unique settings and feature carbon heaters to warm the seats more evenly than conventional wire heaters.



#### VOICE-ACTIVATED TECHNOLOGY

The available Navigation System<sup>6</sup> is one way the ES responds to your voice. Another way: Siri<sup>®</sup> Eyes Free<sup>7</sup>, which connects with your compatible iPhone<sup>®8</sup>, enabling you to access e-mail, send text messages and more. You can also search your portable music collection and use the results to create customized mixes.



#### PREMIUM SURROUND SOUND

The ES offers an available 15-speaker, 835-watt Mark Levinson<sup>®</sup> Premium Surround Sound Audio System.<sup>9</sup> This acoustic triumph is as much a product of determination as it is innovation; Lexus and Mark Levinson<sup>®</sup> engineers worked hand in hand from the beginning of the ES to plan, develop and position every component for the most accurate reproduction of the artist's original recording possible.



#### SUSTAINABLE MATERIALS

The ES and ES Hybrid both offer a steering wheel and accents handcrafted with available sustainable bamboo. They also feature seating trimmed in Lexus NuLuxe, a supple material that is lighter than genuine leather and whose manufacturing process generates no VOCs and 65% fewer CO<sub>2</sub> emissions.



#### ADVANCED SAFETY

Available Lane Departure Alert<sup>10</sup> monitors visible lane markings, and if it detects you're leaving your lane, helps warn you with audible and visual cues. An available Pre-Collision System<sup>11</sup> monitors the road to warn you of upcoming obstacles and, in some cases, even begin braking automatically before impact. Should a collision occur, the ES offers the protection of a class-leading<sup>12</sup> standard 10-airbag system.<sup>13</sup>



EVEN ITS EDGES ARE CUTTING EDGE.



امداد خودرو فارما

تلفن شبانه روزی: ۰۸۵-۸۸۸۶۲۰۲۱

FarmaSOS.com



INNOVATIVE MEASURES WERE TAKEN UNDERNEATH AND ON THE SIDES OF THE ES TO HELP DIRECT AIRFLOW SMOOTHLY AROUND THE BODY, HELPING CONTRIBUTE TO REDUCED NOISE AND VIBRATION, IMPROVED FUEL EFFICIENCY, AND ENHANCED HANDLING AND HIGH-SPEED CONTROL.



**A.** Available bamboo-trimmed steering wheel **B.** iPhone®/iPod® connectivity **C.** Available perforated leather interior trim **D.** Available Lexus Enform<sup>4</sup> with subscription-free App Suite<sup>4</sup> **E.** Available accessory cargo net. For a complete list of Genuine Lexus Accessories, visit [lexus.com/ES/accessories](http://lexus.com/ES/accessories) **F.** Available Blind Spot Monitor<sup>15</sup>



**G.** Electroluminescent instrumentation **H.** Available Light Gray leather interior trim **I.** Drive Mode Select and available Remote Touch<sup>16</sup> interface **J.** Available rear spoiler **K.** Available driver's-seat lower-cushion extender **L.** Available power rear sunshade



**BLIND SPOT  
MONITOR  
WITH REAR  
CROSS-TRAFFIC  
ALERT**

The ES offers drivers more of everything. In some cases, even peace of mind. At speeds above 10 mph, the available Blind Spot Monitor<sup>15</sup> can help you change lanes more confidently by warning you if it detects vehicles in the adjacent lanes. And, the system's ingenious Rear Cross-Traffic Alert<sup>17</sup> feature is designed to detect and warn you of vehicles approaching from behind on either side as you back out of a parking space.



## KEY STANDARD FEATURES

LED daytime running lights (DRL) // Power moonroof // SmartAccess<sup>18,19</sup> with push-button Start/Stop // Drive Mode Select // Dual-zone climate control with interior air filters, smog sensor and automatic recirculating mode // NuLuxe interior trim // Power-adjustable front seats // Bluetooth<sup>®20</sup> phone and audio connectivity // Illuminated entry system // 10 standard airbags<sup>13</sup>

For complete list, visit [lexus.com/ES/features](http://lexus.com/ES/features)

## INDIVIDUAL OPTIONS

Heated front seats // Wood and leather-trimmed shift knob and heated steering wheel (ES) // Heated wood and leather-trimmed steering wheel (ES/ESh) // Power rear sunshade // Rain-sensing wipers with de-icer // Blind Spot Monitor<sup>15</sup> with Rear Cross-Traffic Alert<sup>17</sup> // Power trunk open/close // High-Intensity Discharge (HID) headlamps // Lane Departure Alert<sup>10</sup> with intelligent high-beam headlamps<sup>21</sup> // Intuitive Parking Assist // Pre-Collision System<sup>11</sup> (PCS) with Dynamic Radar Cruise Control<sup>22</sup>

For complete list, visit [lexus.com/ES/options](http://lexus.com/ES/options)

## PACKAGES

### LEXUS DISPLAY AUDIO / BACKUP CAMERA PACKAGE

7.0-in color LCD multi-information display // Backup camera<sup>23</sup> // Center console controller // Lexus eight-speaker Premium Sound System // HD Radio<sup>TM24,25</sup> with iTunes<sup>®14</sup> tagging

### NAVIGATION PACKAGE

Navigation System<sup>6</sup> with color multimedia display // Remote Touch<sup>16</sup> controller // Backup camera<sup>23</sup> // Voice command // Enhanced Bluetooth technology<sup>20</sup> // Subscription-free Lexus Enform App Suite<sup>4</sup> with Bing<sup>TM</sup>, iHeartRadio, OpenTable<sup>®</sup>, MovieTickets.com, Pandora, Yelp<sup>®</sup> and Facebook Places // Lexus Enform<sup>4</sup> with Destination Assist and eDestination. Subscription required. One-year trial subscription included

### MARK LEVINSON AUDIO PACKAGE

(Includes Navigation Package) + Mark Levinson Premium Surround Sound Audio System<sup>9</sup> // 15 GreenEdge<sup>TM</sup> high-efficiency speakers with inverted-motor subwoofer // 835-watt Class-D amplifier // Auto volume technology // Machined-aluminum control knobs

### PREMIUM PACKAGE

Espresso bird's-eye maple (ES) or Bamboo (ES/ESh) interior trim // Power tilt-and-telescopic steering wheel // Lexus Memory System for driver's seat, outside mirrors and steering wheel // Remote keyless entry-linked memory

### LUXURY PACKAGE

(Includes Premium Package) + Perforated leather-trimmed interior // Heated and ventilated front seats

### ULTRA LUXURY PACKAGE

(Includes all Luxury and Premium Package) + Perforated semi-aniline leather interior trim // Panorama glass roof (ES) // Driver's-seat power cushion extender // Ambient interior lighting // Power rear sunshade with manual rear-door sunshades

For complete list, visit [lexus.com/ES/packages](http://lexus.com/ES/packages)  
For complete list of Genuine Lexus Accessories, visit [lexus.com/ES/accessories](http://lexus.com/ES/accessories)

## WHEELS



17-in split-six-spoke alloy wheels<sup>2</sup>  
STANDARD ES



17-in split-10-spoke alloy wheels<sup>2</sup>  
with High Gloss finish  
OPTIONAL ES



18-in split-10-spoke alloy wheels<sup>2</sup>  
with High Gloss finish  
OPTIONAL ES



17-in split-five-spoke alloy wheels<sup>2</sup>  
STANDARD ESh

For more info, visit [lexus.com/ES/wheels](http://lexus.com/ES/wheels)

## KEY SPECS

ES	2.5L <sup>4</sup> IN-LINE 4	268 <sup>HP</sup>	200 <sup>TOTAL SYSTEM HP</sup>
ESh	ESh	ESh	ESh
ENGINE	ATKINSON-CYCLE ENGINE + LEXUS HYBRID DRIVE	HORSEPOWER	PERFORMANCE
FWD	6-SPEED	ECVT	0-60 IN <sup>60</sup> 7.1 <sup>S26</sup> / 8.1 <sup>S26</sup>
STANDARD	ES	ESh	ES ESh

DRIVETRAIN	AUTOMATIC TRANSMISSION	ELECTRONICALLY CONTROLLED CONTINUOUSLY VARIABLE TRANSMISSION	PERFORMANCE
21 / 31 / 24 <sup>27</sup> EST MPG	40 / 39 / 40 <sup>27</sup> EST MPG		
ES	ESh		

FUEL ECONOMY, EPA-ESTIMATED RATINGS (CITY / HIGHWAY / COMBINED)



WIDTH 71.1 IN

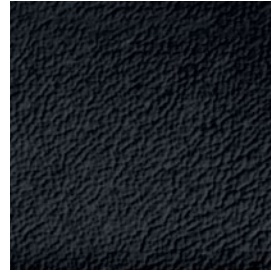
HEIGHT 57.1 IN



WHEELBASE 111.0 IN  
OVERALL LENGTH 192.7 IN

For complete specs, visit [lexus.com/ES/specs](http://lexus.com/ES/specs)

## INTERIOR



BLACK

LEATHER\* or NULUXE



PARCHMENT

LEATHER\* or NULUXE



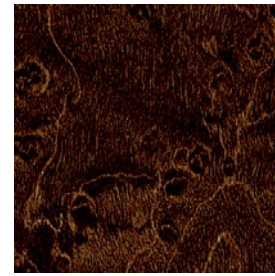
LIGHT GRAY

LEATHER\* or NULUXE

## TRIM



PIANO BLACK



ESPRESSO BIRD'S-EYE MAPLE\*



BAMBOO\*

## EXTERIOR



SILVER LINING METALLIC



STARFIRE PEARL



NEBULA GRAY PEARL



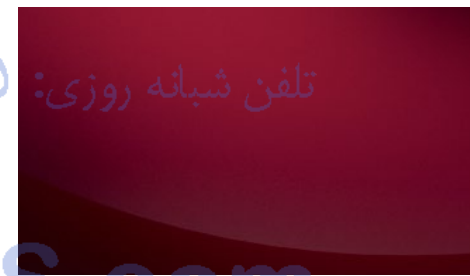
SATIN CASHMERE METALLIC



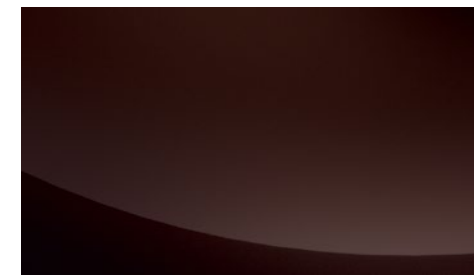
OBSIDIAN



CERULEAN BLUE METALLIC



MATADOR RED MICA



FIRE AGATE PEARL



DEEP SEA MICA

LEATHER* or NULUXE INTERIOR	EXTERIOR									TRIM		
	Silver Lining Metallic	Starfire Pearl	Nebula Gray Pearl	Satin Cashmere Metallic	Obsidian	Cerulean Blue Metallic	Matador Red Mica	Fire Agate Pearl	Deep Sea Mica	Piano Black	Espresso Bird's-Eye Maple*	Bamboo*
Black	●▲	●▲	●▲	●▲	●▲	●▲	●▲	●▲	●▲	●▲	●	●▲
Parchment		●▲	●▲	●▲	●▲	●▲	●▲	●▲	●▲	●▲	●	●▲
Light Gray	●▲	●▲	●▲		●▲	●▲	●▲		●▲	●▲	●	●▲

●ES  
▲ESh  
\*Optional

# “THE NEW ES EVOKES SOME CUES WORTHY OF A BOUTIQUE HOTEL.”

—MOTOR TREND, AUGUST 2012

**WARRANTY** Four-year/50,000-mile Lexus Limited Warranty. Six-year/70,000-mile Powertrain Warranty. Six-year/unlimited-mileage Corrosion Perforation Warranty. All warranties with zero deductible. See the *ES Warranty and Services Guide* at your Lexus dealer for details. **DISCLOSURES** 1. 2014 ES 300h EPA-estimated 40/39/40 (city/highway/combined) MPG. Actual mileage will vary. 2. 17- or 18-in performance tires are expected to experience greater tire wear than conventional tires. Tire life may be substantially less than 20,000 miles (17-in) or 15,000 miles (18-in), depending upon driving conditions. 3. **CAUTION!** When driving a hybrid vehicle, pay special attention to the area around the vehicle. Because there is little vehicle noise in electric-only mode, pedestrians, people riding bicycles or other people and vehicles in the area may not be aware of the vehicle starting off or approaching them, so take extra care while driving. EV mode works under certain conditions at low speeds for up to a mile. See *Owner's Manual*. 4. Always drive safely, obey traffic laws & focus on the road while driving. Apps/services vary by phone/carrier; functionality depends on many factors. Select apps use large amounts of data, you are responsible for all charges. Apps/services are subject to change. Apps identified by ™ or ® are trademarks or registered trademarks of their respective companies. For enrollment, cost and more details, see [lexus.com/enform](http://lexus.com/enform). 5. Contact with the response center may not be available in all areas. Service Agreements required. A variety of subscription terms available; charges will vary. See [lexus.com](http://lexus.com) for details. 6. Availability and accuracy of the information provided by the Navigation System or any SiriusXM™ and/or HD Radio™ services mentioned (if installed) are dependent upon many factors. Use common sense when relying on information provided. Services not available in every city or roadway. Periodic Enform app updates do not include Navigation updates. Navigation updates are available at an additional cost from your local dealer. See *Navigation Owner's Manual* or contact SiriusXM for details. 7. Always drive safely, obey traffic laws & focus on the road while driving. Siri® is available in Beta only on iPhone® 4S, iPhone® 5, iPad® with Retina® display, iPad® mini, & iPod® touch, 5th gen. & requires Internet access. Siri® is not available in all languages or all areas & features vary by area. Data charges may apply. See [Apple.com](http://Apple.com) & phone carrier for details. 8. iPhone® and iPad® are registered trademarks of Apple, Inc. All rights reserved. 9. Mark Levinson® is a registered trademark of Harman International Industries, Inc. 10. Lane Departure Alert is designed to read lane markers under certain conditions and provide visual and audible alerts when lane departure is detected. It is not a collision-avoidance system or a substitute for safe and attentive driving. Effectiveness depends on many factors. See *Owner's Manual* for more information. 11. The Pre-Collision System is designed to help reduce the crash speed and damage in certain frontal collisions only. It is not a collision-avoidance system and is not a substitute for safe and attentive driving. System effectiveness depends on many factors, such as speed, driver input and road conditions. See *Owner's Manual* for further information. 12. Based on 2013 Near-Luxury Class four-door sedans. 13. All the airbag (AB) systems are Supplemental Restraint Systems. All ABs are designed to inflate only under certain conditions and in certain types of severe collisions: frontal and knee ABs typically inflate in frontal collisions; side and side curtain ABs in side collisions; Roll-Sensing Curtain ABs at a severe tilt degree, roll or lateral G-force. In all other accidents, the ABs will not inflate. To decrease the risk of injury from an inflating AB, always wear seatbelts, sit upright in the middle of the seat as far back as possible and do not lean against the door. Do not put objects in front of an AB or around the seatback. Do not use a rearward-facing child seat in any front passenger seat. The force of an inflating AB may cause serious injury or death. See *Owner's Manual* for further information/warnings. 14. iTunes® and iPod® are registered trademarks of Apple Inc. All rights reserved. 15. Do not rely exclusively on the Blind Spot Monitor. Always look over your shoulder and use your turn signal. There are limitations to the function, detection, range and clarity of the monitor. For a complete list of limitations and directions regarding use of the monitor, see *Owner's Manual*. 16. Be sure to obey traffic regulations and maintain awareness of road and traffic conditions. 17. Do not rely exclusively on the Rear Cross-Traffic Alert system. Always look over your shoulder and use your mirrors to confirm rear clearance. There are limitations to the function, detection, range and clarity of the system. To learn more, see *Owner's Manual*. 18. The SmartAccess system may interfere with some pacemakers or cardiac defibrillators. If you have one of these medical devices, please talk to your doctor to see if you should deactivate this system. 19. The engine immobilizer is a state-of-the-art anti-theft system. When you insert your key into the ignition switch or bring a SmartAccess fob into the vehicle, the key transmits an electronic code to the vehicle. The engine will only start if the code in the transponder chip inside the key/fob matches the code in the vehicle's immobilizer. Because the transponder chip is embedded in the key/fob, it can be costly to replace. If you lose a key or fob, your Lexus dealer can help. Alternatively, you can find a qualified independent locksmith to perform high-security key services by consulting your local *Yellow Pages* or by contacting [www.aloa.org](http://www.aloa.org). 20. Bluetooth® technology phones listed on [lexus.com](http://lexus.com) have been tested for compatibility with Lexus vehicles. Performance will vary based on phone software version, coverage and your wireless carrier. Phones are warranted by their manufacturer, not Lexus. The Bluetooth word mark and logos are registered trademarks owned by Bluetooth SIG, Inc. and any use of such marks by Lexus is under license. Other trademarks and trade names are those of their respective owners. 21. Intelligent high-beams system operates at speeds above 21 mph. Situations such as a dirty windshield, variable weather, lighting conditions and hilly terrain will limit effectiveness, requiring the driver to manually turn off. See *Owner's Manual* for details. 22. Dynamic Radar Cruise Control is designed to assist the driver and is not a substitute for safe and attentive driving practices. See *Owner's Manual* for details. 23. The backup camera does not provide a comprehensive view of the rear area of the vehicle. You should also look around outside your vehicle and use your mirrors to confirm rearward clearance. Cold weather may limit effectiveness and view may become cloudy. 24. HD Radio™ Technology manufactured under license from iBiquity Digital Corporation U.S. and Foreign Patents. HD Radio™ and the HD, HD Radio, and "Arc" logos are proprietary trademarks of iBiquity Digital Corp. 25. Coverage and Service may not be available in all areas. 26. Performance figures are for comparison only and were obtained with prototype vehicles by professional drivers using special safety equipment and procedures. Do not attempt. 27. 2014 EPA-estimated ratings. Actual mileage will vary.

Lexus strives to build vehicles to match customer interest, and thus they typically are built with popular options and option packages. Not all options/packages are available separately, and some may not be available in all regions of the country. See [lexus.com](http://lexus.com) for information about options/packages commonly available in your area. If you would prefer a vehicle without any or with different options, contact your dealer to check for current availability or the possibility of placing a special order. Specifications, features, equipment, technical data, performance figures, options, and color and trim are based upon information available at time of printing, are subject to change without notice, and are for mainland U.S.A. vehicles only. Some vehicles shown with available equipment. See your Lexus dealer for details. Lexus reminds you to wear seatbelts, secure children in rear seat, obey all traffic laws and drive responsibly. For more information, call 800-USA-LEXUS (872-5398) or visit [lexus.com](http://lexus.com). To learn more about your financing options, contact your Lexus dealer or call Lexus Financial Services at 800-874-7050.

