

CT

امداد خودرو فارما

14

تلفن شبانه روزی: ۰۲۱-۸۸۸۶۲۰۸۵

FarmaSOS.com



CT 200h 42-mpg EPA-estimated combined rating,¹ five-door versatility, Electronically controlled Continuously Variable Transmission, driver-selected driving modes, double-wishbone rear suspension and Yamaha[®] lateral performance dampers.

CT F SPORT Exclusive F SPORT-tuned suspension, LFA-inspired steering wheel with perforated leather trim and F SPORT badge, aggressive F SPORT styling including a new black roof, rear spoiler with aerodynamic cutouts and an interior trimmed in Black NuLuxe or available Black leather with white perforations.



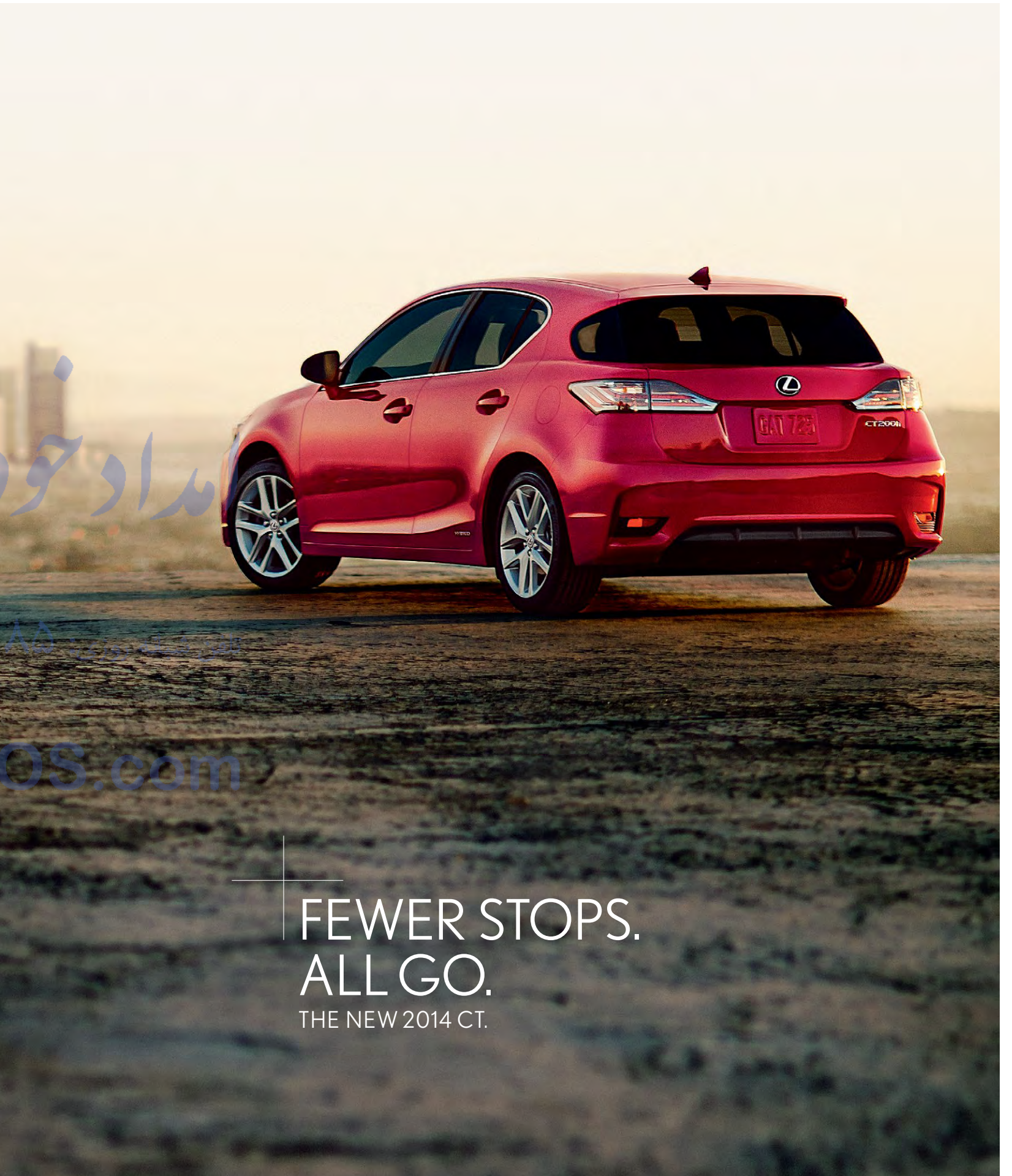
IT'S NOT WHERE YOU TAKE IT.
IT'S WHERE IT TAKES YOU.



مداد خودرو فارما

۰۲۱-۸۸۶۲۰۸۸

FarmaSOS.com



FEWER STOPS.
ALL GO.
THE NEW 2014 CT.

DYNAMIC HANDLING

Get more from your drive. Enjoy a highly responsive suspension, more body welds for enhanced rigidity and updated lateral performance damper components—all combined to deliver an exhilarating ride. Taking this performance to the next level, the CT F SPORT boasts an exclusive sport-tuned suspension, and both models can be equipped with a variety of track-proven F SPORT Accessories.²

ایراد خودرو فارما

تلفن: ۰۲۱ ۸۸۸۶۲۰۰۰

FarmaSOS.com





**F SPORT
STYLING**

Performance is only one way the CT F SPORT takes you further. Its aggressive aesthetics start with the F SPORT 17-inch-split-five-spoke alloy wheels³ with Graphite two-tone finish, continue up the exclusive mesh grille and sculpted front fascia, and wrap around to the unique rear spoiler. And proving it can turn heads from any direction, it features a black roof that epitomizes standout style.



Tailgate parties. Road trips. Concerts in the park. Get around your city like never before when you access subscription-free traffic and weather services⁴ through the available Navigation System⁵ or the available Display Audio System. And with the 42-mpg EPA-estimated combined rating¹ and access to available in-vehicle apps like Yelp[®] and OpenTable[®], your only limit is your imagination.

**MILES OF
POSSIBILITIES IN
EVERY GALLON.**

امداد خودرو فارما
تلفن شبانه روزی: ۰۲۱-۸۸۱۶۲۰۸۵
FarmaSOS.com



ENFORM APP SUITE

Through the available Navigation System,⁵ Lexus Enform^{®6} and Safety Connect^{®7} offer more than live, 24-hour navigation assistance and the peace of mind knowing emergency services can be reached at the press of a button. With the subscription-free App Suite,⁶ making dinner reservations, ordering movie tickets and personalizing your iHeartRadio channels have never been easier.



TRAFFIC AND WEATHER

Own the road with ease thanks to subscription-free traffic and weather.⁴ This system features up-to-date weather forecast information. It can also predict your time of arrival based on current traffic conditions and, when there is congestion on your current route, Traffic Detour Preview automatically displays alternate routes.



DRIVE MODE SELECT

Drive Mode Select lets you choose your level of responsiveness or efficiency. Choose EV mode⁸ at low speeds and short distances to operate on battery alone and eliminate emissions. ECO mode moderates throttle response and engine power for increased fuel efficiency. Feeling a little more daring? Choose Sport mode for a thrilling throttle response and maximized steering feel.



SOUND-DAMPENING MATERIALS

To help you hear less undesirable noise and more of what you do want to hear—like the more dynamic audio system—optimized sound-dampening materials included in the CT help reduce engine and road noise. When combined with optimally placed carpeting and insulation, the result is a ride that's not only exhilarating but also quiet.



AUDIO SYSTEM

The enhanced audio system makes your journey even more enjoyable with the available 10-speaker audio system. Made from sustainably harvested bamboo materials, this audio system doesn't just offer you a clearer conscience. It offers clearer sound. With a digital Class-D amplifier, you'll experience a more efficient and improved sound—no matter what seat you're in.



DRIVER SUPPORT

The CT is designed to help you arrive safely. Use the available Dynamic Radar Cruise Control⁹ to help maintain a preset distance between the CT and the vehicle traveling ahead. If the other vehicle slows, the CT slows automatically. And to help you park with confidence, the available backup camera¹⁰ features new dynamic gridlines so you can view the CT's approximate path when the steering wheel is turning.



F SPORT ACCESSORIES

Take your CT to the next level. Proven on the track, the available F SPORT Accessories² are designed to give you a performance edge. The sway bar kit² helps provide added control during cornering for an exhilarating driving experience. Polish that off with the lightweight 17-inch trident alloy wheels^{2,3} which reduce unsprung weight for enhanced handling and overall ride quality.



PRE-COLLISION SYSTEM

Go further with greater peace of mind. To help prepare for and, if possible, avoid potential front collisions, an available Pre-Collision System¹¹ is designed to watch the road ahead for obstacles and warn you of their presence with audible alerts and visible indications. This advanced technology feature can even preload the brakes to help optimize braking power the moment the brake pedal is depressed.





Share the road. With an interior designed to accommodate up to five passengers, the CT offers an invigorating experience for the driver and passengers alike. Inside you'll find NuLuxe or available leather-trimmed seats, dual-zone climate control and over 30 cubic feet of maximum cargo room.¹² Plus, the driver-centric cockpit delivers an unparalleled connection to the road with low-set bolstered sport seats, a wide-grip steering wheel and a low hood for optimum visibility.



A. Available Flaxen leather interior trim **B.** Leather-trimmed CTF SPORT steering wheel **C.** Leather-trimmed shifter **D.** F SPORT 17-in trident accessory alloy wheels.^{2,3} For a complete list of Genuine Lexus Accessories, visit lexus.com/CT/accessories **E.** Available power-adjustable front seats **F.** Keyless start button



G. Available Remote Touch¹³ controller **H.** Black NuLuxe interior trim **I.** CT F SPORT rear spoiler **J.** Electroluminescent instrumentation **K.** CT F SPORT aluminum pedals **L.** Bamboo accessory dash panel. For a complete list of Genuine Lexus Accessories, visit lexus.com/CT/accessories



Leave impressions, not marks. An EPA-estimated 42-miles-per-gallon combined rating¹ is just the beginning. Crafted to be 90% recyclable¹⁴ and using plant-based materials for the floor mats,¹⁵ audio system's speakers and more, the CT is designed to increase the thrill of driving without increasing its environmental impact.

امداد خودرو فارما

تلفن شبانه روزی: ۰۲۱ ۸۸۸۶۲۰۸۵

FarmaSOS.com



KEY STANDARD FEATURES

SmartAccess^{16,17} with push-button Start/Stop and touch sensors on exterior front-door handles // Power moonroof // Dual-zone automatic climate control with interior air filter // Tilt-and-telescopic steering column // Power windows with one-touch open/close // Lexus six-speaker sound system with in-dash CD player // USB and Bluetooth[®] audio connectivity^{18,19} // Steering-wheel-mounted audio, phone and display controls // 17-in split-five-spoke alloy wheels³ // NuLuxe interior trim // Vehicle Stability Control (VSC)²⁰ // Vehicle theft-deterrent and engine-immobilizer system¹⁷

For complete list, visit lexus.com/CT/features

INDIVIDUAL OPTIONS

Electrochromic (auto-dimming) inside mirror with compass and backup camera¹⁰ // LED headlamps with washers, dynamic auto-leveling and LED foglamps // Intuitive Parking Assist // Pre-Collision System¹¹ with Dynamic Radar Cruise Control⁹

For complete list, visit lexus.com/CT/options

PACKAGES

SEAT COMFORT PACKAGE

Heated front seats // Four-way power-adjustable front-passenger seat

PREMIUM PACKAGE

Rain-sensing wipers // Heated front seats // Four-way power-adjustable front-passenger seat // Electrochromic (auto-dimming) inside mirror with compass (compass moved to multimedia display if equipped with Navigation Package) // HomeLink[®] universal transceiver to operate compatible garage, gate, home lighting and home security systems

LUXURY PACKAGE

(Includes all Premium Package equipment) + Perforated leather interior trim // Lexus Memory System to control power driver's seat and outside mirrors // Electrochromic (auto-dimming) outside mirrors with auto tilt-down in reverse

DISPLAY AUDIO PACKAGE

Lexus Premium Sound System with 10 speakers // Voice command // Enhanced Bluetooth[®] technology¹⁸ // Center console controller¹³ // 7.0-inch color display // Backup camera¹⁰ // HD Radio⁴ // Subscription-free traffic and weather information⁴ // Additional USB port

NAVIGATION PACKAGE

Navigation System⁵ with 7.0-inch color multimedia display // Remote Touch controller¹³ // Backup camera¹⁰ // Subscription-free traffic and weather information⁴ // Voice command // Enhanced Bluetooth[®] technology¹⁸ // Lexus Enform App Suite⁶ Subscription-free with Bing[™], iHeartRadio, OpenTable, MovieTickets.com, Pandora[®], Yelp and Facebook Places // Lexus Enform⁶ with Destination Assist and eDestination. Subscription required. One-year trial subscription included // Lexus Premium Sound System with 10 speakers // HD Radio⁴ // Additional USB port

CT F SPORT

FSPORT-tuned suspension // FSPORT front fascia and mesh grille // Black roof // Rear spoiler with aerodynamic cutouts // Aluminum pedals // FSPORT front fender badges // FSPORT perforated-leather steering wheel and shifter // 17-in split-five-spoke alloy wheels³ with Graphite two-tone finish // Silver Performance dash panel // Black headliner // Black NuLuxe interior trim

CT F SPORT w/LUXURY PACKAGE

(Includes all CT FSPORT and Luxury Package equipment) + Black leather interior trim with white perforations

For complete list, visit lexus.com/CT/packages
For complete list of Genuine Lexus Accessories, visit lexus.com/CT/accessories

WHEELS



17-in split-five-spoke alloy wheels³
Standard



17-in split-five-spoke alloy wheels³
with Graphite two-tone finish
CT FSPORT



FSPORT 17-in trident alloy wheels^{2,3}
Available

امداد خودرو پارما

۰۲۱-۸۸۶۲۰۸۵

FarmaSOS.com

KEY SPECS

134 TOTAL SYSTEM HP²¹

CTH / F SPORT w/Lexus Hybrid Drive

1.8L ATKINSON-CYCLE I-4 ENGINE

ECVT

ELECTRONICALLY CONTROLLED CONTINUOUSLY VARIABLE TRANSMISSION



HEIGHT

57.3 IN

WIDTH 69.5 IN

For more info, visit lexus.com/CT/wheels

0-60 IN 9.8 S^{21,22}

PERFORMANCE

FWD

DRIVETRAIN

43 / 40 / 42¹ EST MPG

FUEL ECONOMY, EPA-ESTIMATED RATINGS (CITY / HIGHWAY / COMBINED)



WHEELBASE

102.4 IN

OVERALL LENGTH

171.2 IN

For complete specs, visit lexus.com/CT/specs

INTERIOR



CARAMEL
NULUXE



PARCHMENT
NULUXE



BLACK
LEATHER* or NULUXE†

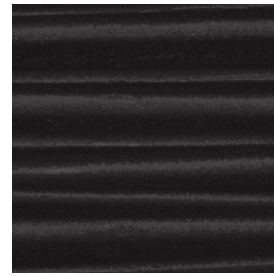


FLAXEN
LEATHER*

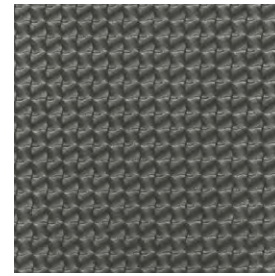


BLACK WITH WHITE
PERFORATIONS
LEATHER*†

TRIM

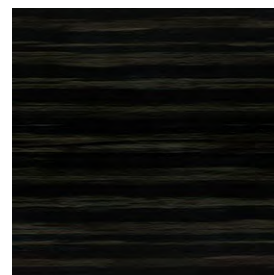


LINEAR BLACK



SILVER
PERFORMANCE†

DASH PANEL ACCESSORY TRIM



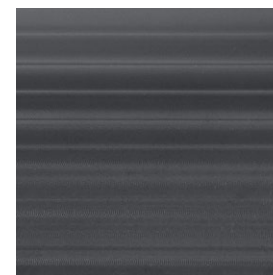
SHIMAMOKU
ESPRESSO WOOD**



BAMBOO**



MATTE BROWN
ASH BURL**



STRIATED GRAPHITE
METALLIC**

EXTERIOR



SILVER LINING METALLIC



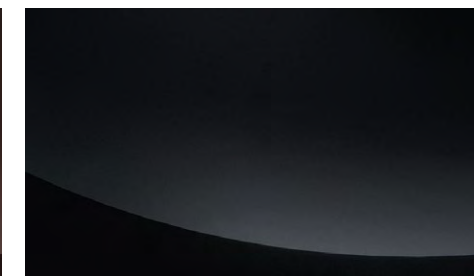
STARFIRE PEARL



NEBULA GRAY PEARL



FIRE AGATE PEARL



OBSIDIAN



REDLINE



ULTRA WHITE†



ULTRASONIC BLUE MICA†

امداد خودرو فارما

تلفن شبانه روزی: ۰۲۱-۸۸۸۶۲۰۸۵

FarmaSOS.com

LEATHER or NULUXE INTERIOR	EXTERIOR								TRIM					
	Silver Lining Metallic	Starfire Pearl	Nebula Gray Pearl	Fire Agate Pearl	Obsidian	Redline	Ultra White†	Ultrasonic Blue Mica†	Linear Black	Matte Brown Ash Burl**	Shimamoku Espresso Wood**	Bamboo**	Striated Graphite Metallic**	Silver Performance†
Caramel NuLuxe	●	●	●	●	●	●			●	●	●	●	●	
Parchment NuLuxe	●	●	●	●	●	●			●	●	●	●	●	
Black Leather*	●	●	●	●	●	●			●	●	●	●	●	
Black NuLuxe†	●▲	●	●▲	●	●▲	●▲	▲	▲	●	●▲	●▲	●▲	●▲	▲
Flaxen Leather*	●	●	●	●	●	●			●	●	●	●	●	
Black with White Perforations*†	▲		▲		▲	▲	▲	▲		▲	▲	▲	▲	▲

● CT

▲ CT FSPORT

* Leather trim is available

† Standard on FSPORT

‡ FSPORT only

** Dash panel trim is available

WARRANTY Four-year/50,000-mile Lexus Limited Warranty. Eight-year/100,000-mile Hybrid System Warranty. Six-year/70,000-mile Powertrain Warranty. Six-year/unlimited-mileage Corrosion Perforation Warranty. All warranties with zero deductible. See the *CT Warranty and Services Guide* at your Lexus dealer for details. **DISCLOSURES** **1.** 2014 EPA-estimated 43/40/42 (city/highway/combined) MPG. Actual mileage will vary. **2.** F SPORT Accessories are warranted for 12 months from the date of installation or for the balance of the new-car or Certified Pre-Owned (CPO) warranty in force at the date of installation, whichever is greater, when installed by an authorized Lexus dealer. F SPORT Accessories installed by anyone other than an authorized Lexus dealer are warranted for 12 months from the date of purchase only, and the warranty coverage is limited to the replacement value of the F SPORT Accessories. These warranties do not cover maintenance services such as replacement of brake pads/linings and clutch linings or noise, vibration, cosmetic conditions and other deterioration caused by normal wear and tear. Part failure caused by improper installation by anyone other than an authorized Lexus dealer may void the F SPORT Accessories warranty, the new-vehicle warranty or both. F SPORT is a trademark of Toyota Motor Corporation. Products available through participating Lexus dealers. **3.** 17-in performance tires are expected to experience greater tire wear than conventional tires. Tire life may be substantially less than 20,000 miles, depending upon driving conditions. **4.** Always drive safely, obey traffic laws & focus on the road while driving. Availability and accuracy of the information provided by HD services is dependent upon many factors. Services not available in every city or roadway. Use common sense when relying on information provided. HD Radio™ Technology manufactured under license from iBiquity Digital Corporation U.S. and Foreign Patents. HD Radio™ and the HD, HD Radio and “Arc” logos are proprietary trademarks of iBiquity Digital Corp. **5.** Always drive safely, obey traffic laws & focus on the road while driving. Availability and accuracy of the information provided by the Navigation System or any HD service is dependent upon many factors. Use common sense when relying on information provided. Services and programming subject to change. Services not available in every city or roadway. Navigation updates are available at an additional cost from your local Lexus dealer. See your *Navigation System Owner’s Manual* or Lexus dealer for details. HD Radio™ Technology manufactured under license from iBiquity Digital Corporation U.S. and Foreign Patents. HD Radio™ and the HD, HD Radio and “Arc” logos are proprietary trademarks of iBiquity Digital Corp. **6.** Always drive safely, obey traffic laws & focus on the road while driving. Apps/services vary by phone/carrier; functionality depends on many factors. Select apps use large amounts of data; you are responsible for charges. Apps & services subject to change. Apps identified by ™ or ® are trademarks or registered trademarks of their respective companies. For enrollment and more details, see lexus.com/enform. **7.** Contact with the response center may not be available in all areas. Service Agreements required. A variety of subscription terms available; charges will vary. See lexus.com for details. **8. CAUTION!** When driving a hybrid vehicle, pay special attention to the area around the vehicle. Because there is little vehicle noise in electric-only mode, pedestrians, people riding bicycles or other people and vehicles in the area may not be aware of the vehicle starting off or approaching them, so take extra care while driving. EV mode works under certain conditions at low speeds for up to a mile. See *Owner’s Manual*. **9.** Dynamic Radar Cruise Control is designed to assist the driver and is not a substitute for safe and attentive driving practices. See *Owner’s Manual* for details. **10.** The backup camera does not provide a comprehensive view of the rear area of the vehicle. You should also look around outside your vehicle and use your mirrors to confirm rearward clearance. Cold weather may limit effectiveness and view may become cloudy. **11.** The Pre-Collision System is designed to help reduce the crash speed and damage in certain frontal collisions only. It is not a collision-avoidance system and is not a substitute for safe and attentive driving. System effectiveness depends on many factors, such as speed, driver input and road conditions. See *Owner’s Manual* for further information. **12.** Cargo and load capacity limited by weight and distribution. **13.** Be sure to obey traffic regulations and maintain awareness of road and traffic conditions. **14.** Calculation based on vehicle life cycle, including CO₂ emissions of vehicle and materials, production, maintenance, disposal and driving over 150,000 miles, compared to conventional non-hybrid gasoline vehicle of similar size-class. **15.** This floor mat was designed specifically for use in your model and model year vehicle and SHOULD NOT be used in any other vehicle. To avoid potential interference with pedal operation, each mat must be secured with retention hooks/clips. Do not install a floor mat on top of an existing floor mat. **16.** The SmartAccess system may interfere with some pacemakers or cardiac defibrillators. If you have one of these medical devices, please talk to your doctor to see if you should deactivate this system. **17.** The engine immobilizer is a state-of-the-art anti-theft system. When you insert your key into the ignition switch or bring a SmartAccess fob into the vehicle, the key transmits an electronic code to the vehicle. The engine will only start if the code in the transponder chip inside the key/fob matches the code in the vehicle’s immobilizer. Because the transponder chip is embedded in the key/fob, it can be costly to replace. If you lose a key or fob, your Lexus dealer can help. Alternatively, you can find a qualified independent locksmith to perform high-security key services by consulting your local *Yellow Pages* or by contacting www.alo.org. **18.** The Bluetooth® word mark and logos are registered trademarks owned by Bluetooth SIG, Inc. and any use of such marks by Lexus is under license. Other trademarks and trade names are those of their respective owners. The phones on lexus.com have been tested for Bluetooth® wireless technology compatibility with Lexus vehicles. Performance will vary based on phone software version, coverage and your wireless carrier. **19.** Bluetooth® audio device must be enabled with A2DP and AVRCP. **20.** Vehicle Stability Control (VSC) is an electronic system designed to help the driver maintain vehicle control under adverse conditions. It is not a substitute for safe driving practices. Factors including speed, road conditions and driver steering input can all affect whether VSC will be effective in preventing a loss of control. See *Owner’s Manual* for further details. **21.** Ratings achieved using the required premium unleaded gasoline with an octane rating of 91 or higher. If premium fuel is not used, performance will decrease. **22.** Performance figures are for comparison only and were obtained with prototype vehicles by professional drivers using special safety equipment and procedures. Do not attempt.

Lexus strives to build vehicles to match customer interest, and thus they typically are built with popular options and option packages. Not all options/packages are available separately, and some may not be available in all regions of the country. See lexus.com for information about options/packages commonly available in your area. If you would prefer a vehicle without any or with different options, contact your dealer to check for current availability or the possibility of placing a special order. Specifications, features, equipment, technical data, performance figures, options, and color and trim are based upon information available at time of printing, are subject to change without notice, and are for mainland U.S.A. vehicles only. Some vehicles shown with available equipment. See your Lexus dealer for details. Lexus reminds you to wear seatbelts, secure children in rear seat, obey all traffic laws and drive responsibly. For more information, call 800-USA-LEXUS (872-5398) or visit lexus.com. To learn more about your financing options, contact your Lexus dealer or call Lexus Financial Services at 800-874-7050.

